

Ele 255
1.982
Cop. 3

S. C. STATE LIBRARY

JAN 28 1983

STATE DOCUMENT

REPORT
of the
SOUTH CAROLINA
STATE
ELECTION COMMISSION

For the Period Ending June 30, 1982



Printed Under the Direction of the
State Budget and Control Board

REPORT
of the
SOUTH CAROLINA
STATE
ELECTION COMMISSION

For the Period Ending June 30, 1982

James B. Ellisor, Executive Director

**Printed Under the Direction of the
State Budget and Control Board**

TABLE OF CONTENTS

	PAGE
Letter of Transmittal	3
Names and Titles of Commission Members	4
Commission Staff	5
History of the Agency	6
Statutory Authority of the Agency	6
Organization of the Agency	6
Organizational Chart	9
Summary of Expenditures	10
Workshop for Registration Officials	10
Minutes of the Meetings of the State Board of Canvassers	11
Returns by District, County and Precinct for Special Election Held on November 10, 1981	13
Voter Registration Breakdown by County and Race	
August 3, 1981	19
November 6, 1981	21
June 1, 1982	23
Publications and Training Aids of the State Election Commission .	25

LETTER OF TRANSMITTAL

Columbia, S. C., June 1982

To His Excellency, Richard W. Riley, and the General Assembly of the State of South Carolina:

In accordance with law, we are privileged to submit to you the Ninth Annual Report of the State Election Commission. This report includes information and data concerning the activities and operation of the Commission for the period of July 1, 1981-June 30, 1982.

Respectfully submitted,

H. Ray Ham, *Chairman*

C. Tyrone Gilmore

Sylvia Schwartz

Neal D. Thigpen

Margaret S. Townsend

Commissioners

**SOUTH CAROLINA
ELECTION COMMISSION MEMBERS**

Appointed by the Governor

H. RAY HAM, Chairman, (1982)
West Columbia, S. C.

C. TYRONE GILMORE (1984)
Spartanburg, S. C.

SYLVIA SCHWARTZ (1984)
Aiken, S. C.

NEAL D. THIGPEN (1982)
Florence, S. C.

MARGARET TOWNSEND, Vice-Chairman (1982)
Charleston, S. C.

COMMISSION STAFF

JAMES B. ELLISOR
Executive Director

NANCY S. FOSTER
Secretary II

JAMES F. HENDRIX
Assistant Director
Staff Development and Training

KATHLEEN V. PATTERSON
Clerk III

ANN C. WOLFE
Senior Accountant

JANE SPIGNER
Clerk III

JOHN M. DIXON
Public Information Specialist II

C. STANLEY HARRIS
Clerk

LINDA M. STANICK
Executive Secretary

FAYE K. CARTER
Key Entry Supervisor

ALICE E. MORRISON
Administrative Assistant

DOREEN BLAIR
Key Entry Operator II

BARBARA J. CARTWRIGHT
Staff Assistant

BARBARA L. GIBSON
Key Entry Operator II

BLONDELL M. MONTAGUE
Key Entry Operator II

HISTORY OF THE STATE ELECTION COMMISSION

The State Election Commission became a separate state agency on January 1, 1969. It had formerly functioned as a division of the office of Secretary of State. It was the feeling of the General Assembly that voter registration and the administration of elections were matters that should be removed from possible influence of partisan, elected officials and placed under the custody of a nonelected bipartisan board or commission. By the law which created the Election Commission, it was required that the Commission be composed of at least one member of the majority political party represented in the General Assembly and at least one member of the largest minority political party represented in the General Assembly.

The State Election Commission operates under authority granted by 1968 Act No. 955, which is codified as Title 7, Section 3-10 et. seq., of the 1976 South Carolina Code of Laws, as amended.

ORGANIZATION OF THE STATE ELECTION COMMISSION

I. ADMINISTRATION

The functions of the Election Commission are administered by a five-member commission, which meets monthly in Columbia, and by an executive director who is chief administrative officer of the agency. Policy, procedures and rules governing the various functions of the Commission are set by the election commissioners and carried out by the executive director. The executive director employs and maintains a competent working staff to assist him in carrying out his duties. During statewide general election years, it is necessary to employ additional personnel in order to carry out the increased responsibilities of the Election Commission at that time.

The Election Commission also considers and recommends changes in the Registration and Election laws to the General Assembly.

II. CENTRAL VOTER REGISTRATION SYSTEM

The Election Commission is the coordinating center of South Carolina's computerized system of voter registration. All forty-six (46) counties report new registrations and registration changes to the

Central Office, where a computer file is built and from which are printed new lists of registered voters for every election that is held in the State: statewide, countywide, municipal or other. This system is responsible for removing from the rolls of voters those persons who have died, moved, been convicted of certain crimes or otherwise become ineligible as electors. In this regard, reports must be obtained from other federal, state and local agencies and compared with the computer files. Detailed records and statistics are maintained on the number of registered voters in each county and precinct of South Carolina. Biannually, voters who have failed to vote in at least one election in a two year period are removed from the list of active voters and placed in an inactive file.

All forms and materials used for voter registration by the Central Office and the County Boards of Registration are printed and paid for by the Election Commission. The Central Office also provides, as a public service, the sale of precinct lists of registered voters at a reasonable cost to any registered elector.

III. AID TO COUNTIES

The Election Commission is charged by law with the responsibility of disbursing, to all counties, a state supplemental appropriation to aid in keeping the Board of Registration office open during normal courthouse hours. The amount received by the counties is based upon their respective populations.

IV. ELECTIONS

A. Office of Elections

The State Election Commission is the chief election officer for the conduct of general and special elections.

This office prints and distributes for statewide general election and countywide special elections all ballots, forms and other materials necessary to conduct such elections for Presidential Electors, State Officers, United States Senators, Members of Congress and Constitutional Amendments.

B. State Board of Canvassers

After the conclusion of state and county general elections, the five commissioners of the Election Commission act as the State Board of Canvassers. The Board certifies the results of elections and hears appeals and protests arising in such elections.

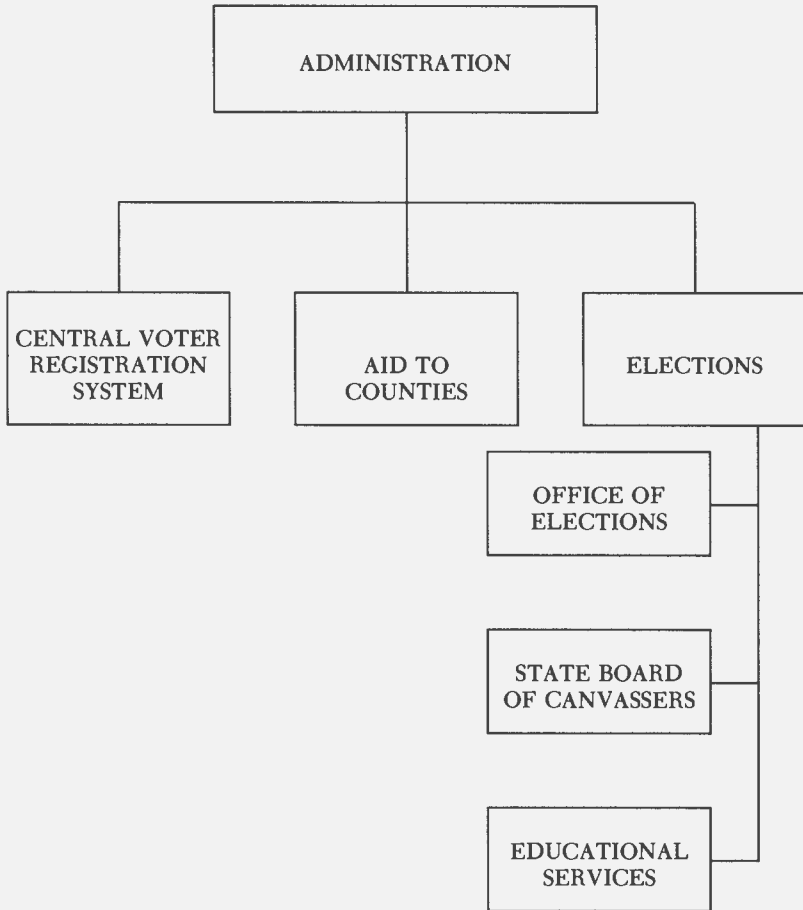
C. Educational Services

The State Election Commission conducts a comprehensive training program for election workers throughout South Carolina on a continuing basis and provides needed information to members of the public concerning election procedures in their State. A variety of election statistics regarding South Carolina's elections are also compiled and available upon request of interested individuals.

Educational Services conducted a statewide training program for poll Managers working in the 1980 General Election. This program was aired to the managers at selected sites throughout the State via the Educational Television Network's closed circuit lines. Special telephone lines and talkback facilities provided by ETV were utilized to answer any manager's questions on the air. Almost all of the managers working in the General Election took part in this training program.

Charleston, Cherokee, Horry, Richland, Spartanburg, Beaufort and Greenville counties continue to implement their in-county poll manager training programs. Aiken and Anderson counties have recently completed the poll managers training course and will begin implementing their in-county poll manager training programs. Several other counties are expected to begin year round training in the near future.

STATE ELECTION COMMISSION



SUMMARY OF EXPENDITURES 1981-1982

I. Administration	\$ 157,039.51
II. Central Voter Registration System	705,779.66
III. Elections	129,119.47
IV. Employee Benefits	<u>37,377.12</u>
TOTAL	\$1,029,315.76

WORKSHOP FOR REGISTRATION OFFICIALS

On April 14, 1982, the State Election Commission held its third biannual workshop for registration officials. All board members and clerks of the respective County Boards of Voter Registration were requested to attend this meeting.

The Workshop was held in an effort to assist the Boards in the organization of their offices, provide information on registration procedures, bring them up to date on changes in the law and to discuss common problems.

Special emphasis was placed on explaining the new absentee voting bill. Passage of this bill increased the responsibilities of the registration boards in the absentee voting process.

A thorough review of the procedures that the boards must follow concerning absentee voting was the highlight of the workshop.

MINUTES OF THE MEETINGS OF THE STATE BOARD OF CANVASSERS

STATE OF SOUTH CAROLINA
COUNTY OF RICHLAND

STATE BOARD OF CANVASSERS

Present: H. Ray Ham, Chairman; Sylvia Schwartz; Margaret S. Townsend; C. Tyrone Gilmore and James B. Ellisor, Executive Director

The State Board of Canvassers met November 17, 1981 to certify the results of the November 10, 1981 Election for Senate District 1, Seat 4. All documents were in order and the Commissioners signed them. Mrs. Nell Smith had only write-in opposition and was declared elected. Her election was certified to the Secretary of State.

Mr. Ham opened the meeting of the State Election Commission and welcomed the members of the Greenville County Board of Registration and representatives from other county boards who were present. The members of the Commission were introduced and a presentation was given by Mr. Don Owens of Greenville concerning problems with registration in Greenville. Greenville County wants to go on the computer with registration in conjunction with the State Election Commission's new computer. Questions were raised as to how a computer will help registration in Greenville County. The Commissioners pointed out to the board members that the State doesn't have the money to fund computers in each county. The counties, however, could come on-line with our computer for information purposes only.

Mr. Ellisor outlined some recommended changes he plans to make to the Legislature that would make registration easier. Also, the new change form will be one you can write on and it will not have to be typed. These forms will be used in the 1982 General Election.

Mr. Ham said the State Election Commission will furnish information to the Boards of Registration concerning computer equipment that can be purchased to come on-line with the State Election Commission's system.

Mr. Ham stated that Airmac Technology, Inc. experienced some difficulties with their scheduled demonstration. The demonstration was tabled until the next commission meeting.

Mrs. Townsend moved that the approval of the last meeting's minutes be put off until the next meeting. The motion was seconded and adopted. Mr. Gilmore moved that the meeting be adjourned. Mrs. Townsend seconded the motion and it was approved.

The next commission meeting will be December 15, 1981 at 12:00 Noon.

A special election was held to fill the vacancy in Senate District 1, Seat 4 which is comprised of Abbeville, Anderson, Oconee, and Pickens Counties.

Political parties referred to in this section are abbreviated as follows:

Democratic — D

Write-In — W

**SPECIAL ELECTION
STATE SENATE, DISTRICT 1 — SEAT 4
NOVEMBER 10, 1981**

ABBEVILLE COUNTY

<i>Precinct</i>	<i>Nell W. Smith (D)</i>	<i>Charles Crowe (W)</i>	<i>Miscellaneous Write-In</i>
Abbeville #1	37		
Abbeville #2	12		
Abbeville #3	16		
Abbeville #4	13	1	
Abbeville Mill	4		
Antreville	14	2	
Broadmouth	16		1
Calhoun Falls #1	32	2	1
Calhoun Falls #2	6		
Central	13		
Cold Springs	8		
Due West	21	1	3
Donalds	13		
Halls Store	8	2	
Hampton	11		
Hillville	13		
Keowee	1		7
Lebanon	16		
Level Land	4		
Lowndesville #1	10		2
Lowndesville #2	9		
Rock Springs	10		
Watts	9		
Mt. View	18	2	
Absentee	2		
COUNTY TOTALS	316	10	14

SPECIAL ELECTION
STATE SENATE, DISTRICT 1 — SEAT 4
NOVEMBER 10, 1981
ANDERSON COUNTY

<i>Precinct</i>	<i>Nell W. Smith</i> (D)	<i>Charles Crowe</i> (W)	<i>Miscellaneous</i> <i>Write-In</i>
Appleton Mill	18	6	3
Barker's Creek	31		
Belton	130	19	3
Bishop's Branch	16	3	1
Bowling Green	21		
Broadway	41	18	5
Bushy Creek	79	11	3
Cedar Grove	30	13	6
Centerville	323	40	16
Chiquola Mill	21		
Concrete	42	24	4
Corner	9		
Craytonville	36	2	
Denver	18	16	2
Edgewood	123	36	8
Equinox	4		
Five Forks	40	8	
Flat Rock	29	15	1
Fork No. 1	28	2	1
Fork No. 2	32	3	8
Friendship	14	8	2
Gluckmill	15		
Green Pond	99	7	4
Grove School	43	2	1
Hall	36	7	2
Hammond School	15	10	1
High Point	23	2	
Homeland Park	99	17	8
Honea Path	84	10	8
Hopewell	99	14	11
Iva	52		10
Jackson Mill	34	1	
LaFrance	18	1	
McAdams	25		
Melton	12		10
Mount Tabor	63	3	3

<i>Precinct</i>	<i>Nell W. Smith (D)</i>	<i>Charles Crowe (W)</i>	<i>Miscellaneous Write-In</i>
Mountain Creek . . .	31	3	1
Mountain View . . .	8		
Neals's Creek	117	6	12
Orr Mill	37	9	2
Pelzer No. 1	11		1
Pelzer No. 4	28		1
Pendleton	125	30	4
Piedmont	28	5	
Piercetown	23	8	1
Riverside-Toxaway	2	5	
Rock Mill	92	14	8
Rock Spring	26		
Sandy Springs	60	2	
Shirleys Store	39	10	2
Simpsonville	36	2	3
Starr	64	5	1
Three & Twenty . .	51		
Toney Creek	28	3	
Townville	20	2	3
Walker-McElmoyl .	15	6	2
West Pelzer	52	12	4
West Savannah . . .	13	3	7
White Plains	63	12	3
Williamston	126	14	6
Williamston Mill . .	48	4	1
Wright's School . . .	34	2	4
Anderson W1 P1 . .	107	26	
Anderson W1 P2 . .	145	32	7
Anderson W2 P1 . .	79	15	3
Anderson W2 P2 . .	182	39	8
Anderson W3 P1 . .	46	14	1
Anderson W3 P2 . .	58	9	3
Anderson W4 P1 . .	48	1	
Anderson W4 P2 . .	34	6	2
Anderson W5 P1 . .	33	5	4
Anderson W5 P2 . .	49		3
Anderson W6 P1 . .	76	21	4
Anderson W6 P2 . .	31	3	1
Absentee	25	3	2
COUNTY TOTALS	3,892	629	225

**SPECIAL ELECTION
STATE SENATE, DISTRICT 1 — SEAT 4
NOVEMBER 10, 1981**

OCONEE COUNTY

<i>Precinct</i>	<i>Nell W. Smith (D)</i>	<i>Charles Crowe (W)</i>	<i>Miscellaneous Write-In</i>
Earles Grove	25		
Fair Play	11	1	
Friendship	13	1	
Holly Springs	15		
Keowee	45	1	
Long Creek	14		1
Madison	22	2	1
Mt. Rest	33	4	4
Newry-Corinth	15		
Oakway	35	3	
Providence	33		
Ravenel	51	8	
Return	22		
Richland	19	1	
Salem	39	7	
Seneca #1	55	8	1
Seneca #2	47	9	
Seneca #3	32	1	
Seneca #4	46	1	
Shiloh	19		1
South Union	13	2	
Tamassee	41	1	
Toxeena	27		14
Utica	20		
Walhalla #1	141	1	1
Walhalla #2	134	4	1
Westminster #1	192	3	1
Westminster #2	214	3	2
West Union	41	2	
Absentee	0		1
COUNTY TOTALS	1,414	63	28

SPECIAL ELECTION
STATE SENATE, DISTRICT 1 — SEAT 4
NOVEMBER 10, 1981

PICKENS COUNTY

<i>Precinct</i>	<i>Nell W. Smith (D)</i>	<i>Charles Crowe (W)</i>	<i>Miscellaneous Write-In</i>
Albert Lewis	12		2
Alice	44	3	4
Arial	36	5	
Central	44	9	1
Clemson	105	28	3
Crosswell	27	1	1
Dacusville	24		1
Easley	488	13	6
Easley Mill	96	3	4
Flat Rock	14	1	
Glenwood	28	4	
Griffin	27	2	1
Holly Springs	11	1	1
Liberty	74	8	2
Mt. View	5	1	
Norris	11	2	
Mt. Carmel	19		2
Pickens	118	10	8
Pickens Mill	19	3	2
Pumpkintown	23	27	1
Praters	16		
Rocky Bottom	12		
Six Mile	32	6	5
South Liberty	37	4	2
Old Stone Church	34	5	2
Zion	17		3
Absentee	17		
COUNTY TOTALS	1,390	136	51

**SPECIAL ELECTION
STATE SENATE, DISTRICT 1 — SEAT 4
NOVEMBER 10, 1981**

DISTRICT TOTALS

<i>County</i>	<i>Nell W. Smith (D)</i>	<i>Charles Crowe (W)</i>	<i>Miscellaneous Write-In</i>
Abbeville	316	10	14
Anderson	3,892	629	225
Oconee	1,414	63	28
Pickens	1,390	136	51
DISTRICT TOTALS	7,012	838	318

SOUTH CAROLINA ELECTION COMMISSION
VOTER REGISTRATION BREAKDOWN BY RACE REPORT
August 3, 1981

<i>County</i>	<i>Indian</i>	<i>Oriental</i>	<i>Black</i>	<i>White</i>	<i>Total</i>
ABBEVILLE	1	3	1,575	6,206	7,785
AIKEN	10	20	7,809	34,159	41,998
ALLENDALE			2,875	2,208	5,083
ANDERSON	6	15	4,902	37,647	42,570
BAMBERG	2	1	3,189	3,707	6,899
BARNWELL	1	4	3,073	5,555	8,633
BEAUFORT	7	14	7,286	15,321	22,628
BERKELEY	3	120	7,997	20,267	28,387
CALHOUN		1	2,148	2,608	4,757
CHARLESTON	22	144	32,444	68,157	100,767
CHEROKEE	2	5	2,486	13,431	15,924
CHESTER	2	2	3,053	7,428	10,485
CHESTERFIELD	1	3	3,818	10,390	14,212
CLARENDON	2	1	6,651	6,290	12,944
COLLETON	29	1	5,521	7,608	13,159
DARLINGTON	3	2	8,192	15,539	23,736
DILLON	33	3	4,613	7,573	12,222
DORCHESTER	46	26	6,323	17,882	24,227
EDGEFIELD	1	3	3,283	4,188	7,475
FAIRFIELD			3,894	3,858	7,752
FLORENCE	10	17	13,266	28,191	41,484
GEORGETOWN		3	6,879	9,912	16,794
GREENVILLE	26	61	11,841	84,947	96,875
GREENWOOD	2	11	4,135	15,839	19,987
HAMPTON		1	4,191	4,034	8,226
HORRY	11	20	7,317	30,355	37,703
JASPER	1	3	3,527	3,206	6,737
KERSHAW	3	5	3,847	11,527	15,382
LANCASTER	1	3	2,853	15,363	18,220
LAURENS	1	2	3,985	13,352	17,340
LEE			5,407	4,591	9,998
LEXINGTON	21	41	3,708	48,492	52,262
McCORMICK		2	1,569	1,646	3,217
MARION	8	2	5,216	6,161	11,387
MARLBORO	32		4,122	7,521	11,675
NEWBERRY	1	3	2,171	9,728	11,903
OCONEE	2	4	1,070	15,112	16,188
ORANGEBURG	39	16	17,619	16,926	34,600
PICKENS	3	13	1,224	23,049	24,289
RICHLAND	43	165	33,246	65,810	99,264
SALUDA			1,454	4,705	6,159
SPARTANBURG	12	31	10,891	59,940	70,874
SUMTER	11	22	12,072	17,320	29,425
UNION	3	1	2,608	9,957	12,569

<i>County</i>	<i>Indian</i>	<i>Oriental</i>	<i>Black</i>	<i>White</i>	<i>Total</i>
WILLIAMSBURG .	3		9,598	7,429	17,030
YORK	39	5	4,591	26,671	31,306
STATE TOTALS ..	443	799	299,539	831,806	1,132,587

SOUTH CAROLINA ELECTION COMMISSION
VOTER REGISTRATION BREAKDOWN BY RACE REPORT

November 6, 1981

<i>County</i>	<i>Indian</i>	<i>Oriental</i>	<i>Black</i>	<i>White</i>	<i>Total</i>
ABBEVILLE	2	3	1,597	6,251	7,853
AIKEN	11	21	8,099	34,357	42,488
ALLENDALE	1		2,883	2,215	5,099
ANDERSON	6	15	4,983	37,919	42,923
BAMBERG	2	1	3,219	3,653	6,875
BARNWELL	1	4	3,120	5,588	8,713
BEAUFORT	10	16	7,336	15,454	22,816
BERKELEY	4	120	8,093	20,499	28,716
CALHOUN		1	2,278	2,621	4,900
CHARLESTON ...	22	147	32,984	68,995	102,148
CHEROKEE	2	5	2,553	13,607	16,167
CHESTER	2	2	3,093	7,477	10,574
CHESTERFIELD .	1	3	3,853	10,422	14,279
CLARENDON	2	1	6,702	6,291	12,996
COLLETON	29	1	5,561	7,636	13,227
DARLINGTON ...	2	2	8,288	15,684	23,976
DILLON	34	3	4,649	7,579	12,265
DORCHESTER ...	46	26	6,358	17,994	24,424
EDGEFIELD	1	3	3,402	4,195	7,601
FAIRFIELD			4,073	3,891	7,964
FLORENCE	10	17	13,446	28,378	41,851
GEORGETOWN ..		3	6,953	9,940	16,896
GREENVILLE ...	26	63	11,976	85,587	97,652
GREENWOOD ...	2	12	4,191	15,914	20,119
HAMPTON	1	1	4,243	4,063	8,308
HORRY	11	20	7,431	30,885	38,347
JASPER	1	3	3,568	3,198	6,770
KERSHAW	3	6	3,869	11,564	15,442
LANCASTER	1	4	2,889	15,452	18,346
LAURENS	1	2	4,043	13,467	17,513
LEE			5,435	4,640	10,075
LEXINGTON	21	41	3,797	48,885	52,744
McCORMICK		3	1,584	1,645	3,232
MARION	8	2	5,258	6,173	11,441
MARLBORO	32		4,162	7,558	11,752
NEWBERRY	1	3	2,182	9,694	11,880
OCONEE	2	4	1,100	15,406	16,512
ORANGEBURG ...	39	16	17,993	17,109	35,157
PICKENS	3	16	1,243	23,434	24,696
RICHLAND	44	165	33,794	66,047	100,050
SALUDA			1,502	4,742	6,244
SPARTANBURG ..	12	31	11,102	60,448	71,593
SUMTER	12	22	12,211	17,379	29,624
UNION	3	2	2,634	10,001	12,640

County	Indian	Oriental	Black	White	Total
WILLIAMSBURG .	3		9,940	7,549	17,492
YORK	39	5	4,800	27,114	31,958
STATE TOTALS ..	453	815	304,470	838,600	1,144,338

1957	1958	1959	0	0	ALBANY
1960	1961	1962	12	21	ALBANY
1963	1964	1965	1	1	ALBANY
1966	1967	1968	0	0	ALBANY
1969	1970	1971	1	2	ALBANY
1972	1973	1974	1	1	ALBANY
1975	1976	1977	0	0	ALBANY
1978	1979	1980	0	0	ALBANY
1981	1982	1983	0	0	ALBANY
1984	1985	1986	0	0	ALBANY
1987	1988	1989	0	0	ALBANY
1990	1991	1992	0	0	ALBANY
1993	1994	1995	0	0	ALBANY
1996	1997	1998	0	0	ALBANY
1999	2000	2001	0	0	ALBANY
2002	2003	2004	0	0	ALBANY
2005	2006	2007	0	0	ALBANY
2008	2009	2010	0	0	ALBANY
2011	2012	2013	0	0	ALBANY
2014	2015	2016	0	0	ALBANY
2017	2018	2019	0	0	ALBANY
2020	2021	2022	0	0	ALBANY
2023	2024	2025	0	0	ALBANY
2026	2027	2028	0	0	ALBANY
2029	2030	2031	0	0	ALBANY
2032	2033	2034	0	0	ALBANY
2035	2036	2037	0	0	ALBANY
2038	2039	2040	0	0	ALBANY
2041	2042	2043	0	0	ALBANY
2044	2045	2046	0	0	ALBANY
2047	2048	2049	0	0	ALBANY
2050	2051	2052	0	0	ALBANY
2053	2054	2055	0	0	ALBANY
2056	2057	2058	0	0	ALBANY
2059	2060	2061	0	0	ALBANY
2062	2063	2064	0	0	ALBANY
2065	2066	2067	0	0	ALBANY
2068	2069	2070	0	0	ALBANY
2071	2072	2073	0	0	ALBANY
2074	2075	2076	0	0	ALBANY
2077	2078	2079	0	0	ALBANY
2080	2081	2082	0	0	ALBANY
2083	2084	2085	0	0	ALBANY
2086	2087	2088	0	0	ALBANY
2089	2090	2091	0	0	ALBANY
2092	2093	2094	0	0	ALBANY
2095	2096	2097	0	0	ALBANY
2098	2099	2100	0	0	ALBANY
2101	2102	2103	0	0	ALBANY
2104	2105	2106	0	0	ALBANY
2107	2108	2109	0	0	ALBANY
2110	2111	2112	0	0	ALBANY
2113	2114	2115	0	0	ALBANY
2116	2117	2118	0	0	ALBANY
2119	2120	2121	0	0	ALBANY
2122	2123	2124	0	0	ALBANY
2125	2126	2127	0	0	ALBANY
2128	2129	2130	0	0	ALBANY
2131	2132	2133	0	0	ALBANY
2134	2135	2136	0	0	ALBANY
2137	2138	2139	0	0	ALBANY
2140	2141	2142	0	0	ALBANY
2143	2144	2145	0	0	ALBANY
2146	2147	2148	0	0	ALBANY
2149	2150	2151	0	0	ALBANY
2152	2153	2154	0	0	ALBANY
2155	2156	2157	0	0	ALBANY
2158	2159	2160	0	0	ALBANY
2161	2162	2163	0	0	ALBANY
2164	2165	2166	0	0	ALBANY
2167	2168	2169	0	0	ALBANY
2170	2171	2172	0	0	ALBANY
2173	2174	2175	0	0	ALBANY
2176	2177	2178	0	0	ALBANY
2179	2180	2181	0	0	ALBANY
2182	2183	2184	0	0	ALBANY
2185	2186	2187	0	0	ALBANY
2188	2189	2190	0	0	ALBANY
2191	2192	2193	0	0	ALBANY
2194	2195	2196	0	0	ALBANY
2197	2198	2199	0	0	ALBANY
2200	2201	2202	0	0	ALBANY
2203	2204	2205	0	0	ALBANY
2206	2207	2208	0	0	ALBANY
2209	2210	2211	0	0	ALBANY
2212	2213	2214	0	0	ALBANY
2215	2216	2217	0	0	ALBANY
2218	2219	2220	0	0	ALBANY
2221	2222	2223	0	0	ALBANY
2224	2225	2226	0	0	ALBANY
2227	2228	2229	0	0	ALBANY
2230	2231	2232	0	0	ALBANY
2233	2234	2235	0	0	ALBANY
2236	2237	2238	0	0	ALBANY
2239	2240	2241	0	0	ALBANY
2242	2243	2244	0	0	ALBANY
2245	2246	2247	0	0	ALBANY
2248	2249	2250	0	0	ALBANY
2251	2252	2253	0	0	ALBANY
2254	2255	2256	0	0	ALBANY
2257	2258	2259	0	0	ALBANY
2260	2261	2262	0	0	ALBANY
2263	2264	2265	0	0	ALBANY
2266	2267	2268	0	0	ALBANY
2269	2270	2271	0	0	ALBANY
2272	2273	2274	0	0	ALBANY
2275	2276	2277	0	0	ALBANY
2278	2279	2280	0	0	ALBANY
2281	2282	2283	0	0	ALBANY
2284	2285	2286	0	0	ALBANY
2287	2288	2289	0	0	ALBANY
2290	2291	2292	0	0	ALBANY
2293	2294	2295	0	0	ALBANY
2296	2297	2298	0	0	ALBANY
2299	2300	2301	0	0	ALBANY
2302	2303	2304	0	0	ALBANY
2305	2306	2307	0	0	ALBANY
2308	2309	2310	0	0	ALBANY
2311	2312	2313	0	0	ALBANY
2314	2315	2316	0	0	ALBANY
2317	2318	2319	0	0	ALBANY
2320	2321	2322	0	0	ALBANY
2323	2324	2325	0	0	ALBANY
2326	2327	2328	0	0	ALBANY
2329	2330	2331	0	0	ALBANY
2332	2333	2334	0	0	ALBANY
2335	2336	2337	0	0	ALBANY
2338	2339	2340	0	0	ALBANY
2341	2342	2343	0	0	ALBANY
2344	2345	2346	0	0	ALBANY
2347	2348	2349	0	0	ALBANY
2350	2351	2352	0	0	ALBANY
2353	2354	2355	0	0	ALBANY
2356	2357	2358	0	0	ALBANY
2359	2360	2361	0	0	ALBANY
2362	2363	2364	0	0	ALBANY
2365	2366	2367	0	0	ALBANY
2368	2369	2370	0	0	ALBANY
2371	2372	2373	0	0	ALBANY
2374	2375	2376	0	0	ALBANY
2377	2378	2379	0	0	ALBANY
2380	2381	2382	0	0	ALBANY
2383	2384	2385	0	0	ALBANY
2386	2387	2388	0	0	ALBANY
2389	2390	2391	0	0	ALBANY
2392	2393	2394	0	0	ALBANY
2395	2396	2397	0	0	ALBANY
2398	2399	2400	0	0	ALBANY
2401	2402	2403	0	0	ALBANY
2404	2405	2406	0	0	ALBANY
2407	2408	2409	0	0	ALBANY
2410	2411	2412	0	0	ALBANY
2413	2414	2415	0	0	ALBANY
2416	2417	2418	0	0	ALBANY
2419	2420	2421	0	0	ALBANY
2422	2423	2424	0	0	ALBANY
2425	2426	2427	0	0	ALBANY
2428	2429	2430	0	0	ALBANY
2431	2432	2433	0	0	ALBANY
2434	2435	2436	0	0	ALBANY
2437	2438	2439	0	0	ALBANY
2440	2441	2442	0	0	ALBANY
2443	2444	2445	0	0	ALBANY
2446	2447	2448	0	0	ALBANY
2449	2450	2451	0	0	ALBANY
2452	2453	2454	0	0	ALBANY
2455	2456	2457	0	0	ALBANY
2458	2459	2460	0	0	ALBANY
2461	2462	2463	0	0	ALBANY
2464	2465	2466	0	0	ALBANY
2467	2468	2469	0	0	ALBANY
2470	2471	2472	0	0	ALBANY
2473	2474	2475	0	0	ALBANY
2476	2477	2478	0	0	ALBANY
2479	2480	2481	0	0	ALBANY
2482	2483	2484	0	0	ALBANY
2485	2486	2487	0	0	ALBANY
2488	2489	2490	0	0	ALBANY
2491	2492	2493	0	0	ALBANY
2494	2495	2496	0	0	ALBANY
2497	2498	2499	0	0	ALBANY
2500	2501	2502	0	0	ALBANY

SOUTH CAROLINA ELECTION COMMISSION
VOTER REGISTRATION BREAKDOWN BY RACE REPORT

June 1, 1982

<i>County</i>	<i>Indian</i>	<i>Oriental</i>	<i>Black</i>	<i>White</i>	<i>Total</i>
ABBEVILLE	2		1,718	6,354	8,074
AIKEN	12	1	8,309	34,883	43,205
ALLENDALE	1		2,982	2,232	5,215
ANDERSON	8		5,205	39,033	44,246
BAMBERG	2		3,496	3,750	7,248
BARNWELL	1		3,327	5,735	9,063
BEAUFORT	10	3	7,666	16,046	23,725
BERKELEY	4	9	8,879	21,382	30,274
CALHOUN			2,444	2,691	5,135
CHARLESTON ...	26	4	34,541	70,519	105,090
CHEROKEE	2	1	2,747	14,621	17,371
CHESTER	4		3,223	7,626	10,853
CHESTERFIELD .	1		4,093	10,943	15,037
CLARENDON	2		7,125	6,498	13,625
COLLETON	29		5,695	7,699	13,423
DARLINGTON ...	4		8,663	15,993	24,660
DILLON	43		4,787	7,905	12,734
DORCHESTER ...	48		6,465	18,500	25,013
EDGEFIELD	1		3,529	4,300	7,830
FAIRFIELD			4,282	3,988	8,270
FLORENCE	12	1	14,268	29,134	43,415
GEORGETOWN ..			7,308	10,322	17,630
GREENVILLE ...	36	5	12,600	88,200	100,841
GREENWOOD ...	3	1	4,732	16,651	21,387
HAMPTON	1		4,491	4,268	8,760
HORRY	10		7,980	32,326	40,316
JASPER	1		3,993	3,499	7,493
KERSHAW	3		4,021	11,706	15,730
LANCASTER	1		2,937	15,584	18,522
LAURENS	1	1	4,155	13,690	17,847
LEE			5,534	4,678	10,212
LEXINGTON	23	1	3,946	49,629	53,599
McCORMICK			1,718	1,696	3,414
MARION	8		5,787	6,456	12,251
MARLBORO	34		4,402	7,883	12,319
NEWBERRY	1		2,216	9,720	11,937
OCONEE	3		1,185	15,842	17,030
ORANGEBURG ...	39	1	19,160	17,515	36,715
PICKENS	3		1,286	24,155	25,444
RICHLAND	47	6	35,611	67,545	103,209
SALUDA			1,672	4,815	6,487
SPARTANBURG ..	12		11,617	61,628	73,257
SUMTER	13	2	13,010	17,872	30,897
UNION	2		2,816	10,384	13,203

STATE ELECTION COMMISSION PUBLICATIONS AND TRAINING AIDS

1. Registration and Election Laws of South Carolina (published every even-numbered election year in August or September.)
2. Booklet entitled "Poll Manager's Handbook for Conduct of General Elections" (published each even-numbered election year in September or October.)
3. Annual Report.
4. Periodic brochures, pamphlets and statistical data for the public on voter registration and election procedures and the number of registered voters in the State.
5. Statistical data on voter turnout for every election held in South Carolina is available for public inspection at the office of the State Election Commission. This data includes the number of registered voters and the number who actually voted broken down by race and sex.
6. "Selected Legal Opinions and Correspondence" was prepared to be used by the County Board of Voter Registration. The booklet outlines certain procedures to be followed by the Boards when certain problem situations arise in registration. It will be updated periodically.
7. "Manual of Instruction for Voter Registration" was prepared for all members of the County Boards of Voter Registration. It outlines all clerical procedures to be followed for voter registration. This booklet will be updated periodically.
8. Training films, video and audio productions used to instruct election officials and provide information to the public concerning voter registration and election procedures.
9. Pamphlet entitled "Are You Eligible To Vote?" prepared for distribution to the general public. Contains useful information about registration and voting procedures in South Carolina.
10. Booklet entitled "What To Do If . . ." prepared to be used by poll workers and other election officials in helping to answer common election day problems.
11. *A Directory of Minority and Women Elected County Officials of South Carolina* prepared for distribution to the general public. It will be updated after each general election.

12. "Handbook for County Election Commissioners" was prepared for all members of the County Election Commissions in South Carolina. This booklet sets out the commissioners duties and responsibilities and the proper procedures to be followed in conducting elections. It will be updated periodically.

