

COMMUNITY PROFILE

Darlington County



S.C. Department of Employment & Workforce

Business Intelligence Department

1550 Gadsden Street, PO Box 995

Columbia, SC 29202

803.737.2660

www.SCWorkforceInfo.com

Updated: 07/16/2015



Table Of Contents

1. Economic Data

Annual Unemployment Rates.....	1
Monthly Unemployment Rates.....	2
Area Job Openings.....	3
Unemployment Insurance.....	4
Demographic Data.....	4
Industry Data.....	5
Occupation Data.....	6
Retail Sales.....	7

2. Demographic Data

Population.....	8
Age.....	8
Race.....	9
Gender.....	9
Change.....	10
Commuting Patterns.....	11
Residents Commuting To.....	12
Workers Commuting From.....	12
Employer Data.....	13
Size of Establishments.....	13
Employment by Size of Establishment.....	13
20 Largest Employers	14

3. Industry Data

Employment by Industry.....	15
New Startup Firms.....	16
Top Occupational Openings.....	17
New Hires by Industry.....	18
Turnover by Industry.....	19
Average Annual Wage by Industry.....	20
Age of Workers by Industry.....	21
Projections by Industry.....	22

4. Occupation Data

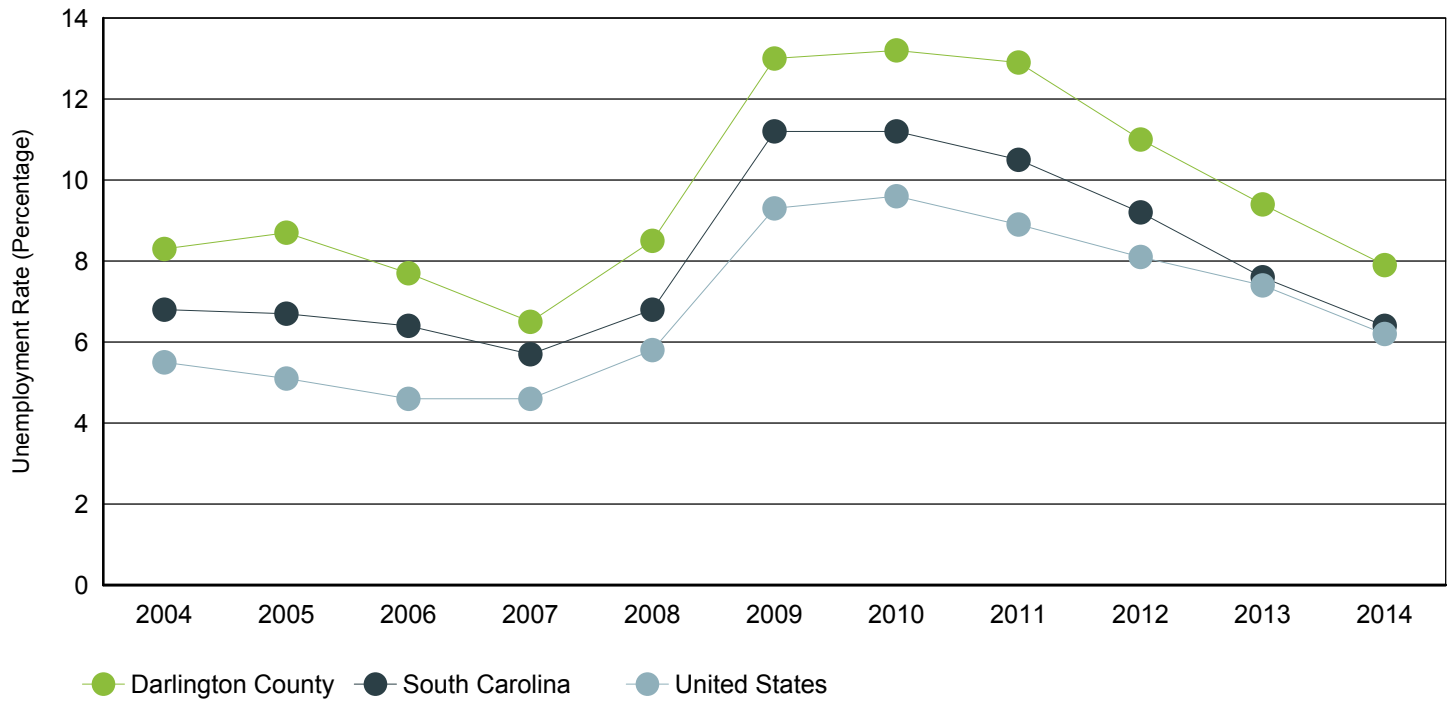
Projections by Occupation.....	23
Growing Occupations.....	24
Declining Occupations.....	25

5. Education Data

Educational Attainment.....	26
Graduate Trends.....	27
Educational Institutions.....	28

Annual Unemployment Rate (Unadjusted)

Trends



Year	Darlington County			South Carolina			United States		
	Employment	Unemp	Rate	Employment	Unemp	Rate	Employment	Unemp	Rate
2014	27,158	2,345	7.9%	2,056,136	141,451	6.4%	146,305,000	9,617,000	6.2%
2013	27,139	2,800	9.4%	2,013,452	166,641	7.6%	143,929,000	11,460,000	7.4%
2012	26,949	3,344	11.0%	1,978,328	199,830	9.2%	142,469,000	12,506,000	8.1%
2011	26,466	3,919	12.9%	1,942,109	228,937	10.5%	139,869,000	13,747,000	8.9%
2010	26,556	4,035	13.2%	1,915,045	240,623	11.2%	139,064,000	14,825,000	9.6%
2009	27,033	4,035	13.0%	1,910,670	242,075	11.2%	139,877,000	14,265,000	9.3%
2008	28,493	2,650	8.5%	1,996,409	145,823	6.8%	145,362,000	8,924,000	5.8%
2007	28,762	2,008	6.5%	2,005,686	120,205	5.7%	146,047,000	7,078,000	4.6%
2006	28,639	2,381	7.7%	1,973,337	135,760	6.4%	144,427,000	7,001,000	4.6%
2005	27,930	2,658	8.7%	1,929,233	139,366	6.7%	141,730,000	7,591,000	5.1%
2004	28,190	2,537	8.3%	1,894,141	139,169	6.8%	139,252,000	8,149,000	5.5%

Source: S.C. Department of Employment & Workforce

Monthly Unemployment Rate (Unadjusted)

Past 13 Months



Period	Darlington County	South Carolina	United States
Jun 2015	8.5%	6.7%	5.5%
May 2015	7.9%	6.5%	5.3%
Apr 2015	7.5%	6.1%	5.1%
Mar 2015	7.5%	6.2%	5.6%
Feb 2015	8.4%	6.8%	5.8%
Jan 2015	8.4%	6.9%	6.1%
Dec 2014	7.5%	6.4%	5.4%
Nov 2014	7.7%	6.5%	5.5%
Oct 2014	8.2%	6.6%	5.5%
Sep 2014	8.4%	6.8%	5.7%
Aug 2014	8.9%	7.2%	6.3%
Jul 2014	8.8%	6.9%	6.5%
Jun 2014	8.2%	6.6%	6.3%

Source: S.C. Department of Employment & Workforce

Area Job Openings

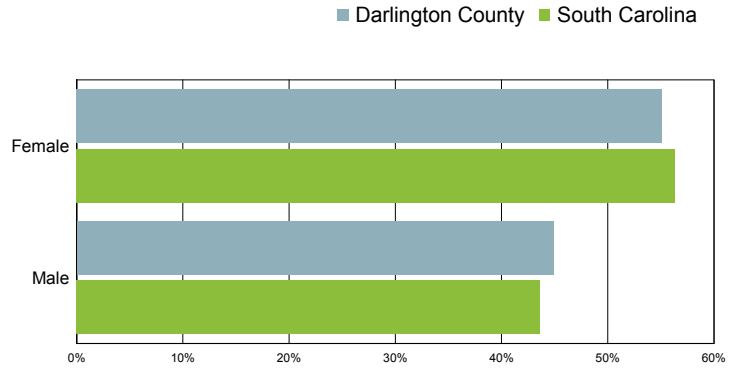
Period	Darlington County				South Carolina			
	Employed	Unemployed	Unemp. Rate	Job Openings	Employed	Unemployed	Unemp. Rate	Job Openings
Jun-15	27,694	2,579	8.5%	347	2,112,034	148,757	6.6%	72,915
May-15	27,557	2,368	7.9%	366	2,109,940	153,158	6.8%	70,959
Apr-15	27,461	2,223	7.5%	338	2,104,381	151,453	6.7%	73,570
Mar-15	27,558	2,238	7.5%	333	2,096,484	149,759	6.7%	71,879
Feb-15	27,557	2,532	8.4%	284	2,090,272	148,179	6.6%	63,628
Jan-15	27,564	2,529	8.4%	274	2,079,800	146,940	6.6%	62,305
Dec-14	27,242	2,221	7.5%	223	2,069,190	147,062	6.6%	53,848
Nov-14	27,264	2,281	7.7%	264	2,066,291	146,577	6.6%	57,852
Oct-14	27,178	2,421	8.2%	308	2,062,762	145,732	6.6%	67,304
Sep-14	27,251	2,490	8.4%	309	2,058,778	144,356	6.6%	66,923
Aug-14	27,158	2,662	8.9%	282	2,054,756	142,275	6.5%	69,456
Jul-14	27,258	2,637	8.8%	345	2,051,047	139,641	6.4%	72,271
Jun-14	27,379	2,459	8.2%	322	2,047,765	136,828	6.3%	66,842

Source: S.C. Department of Employment & Workforce & The Conference Board's Help Wanted OnLine® data series
 South Carolina Data is Seasonally Adjusted

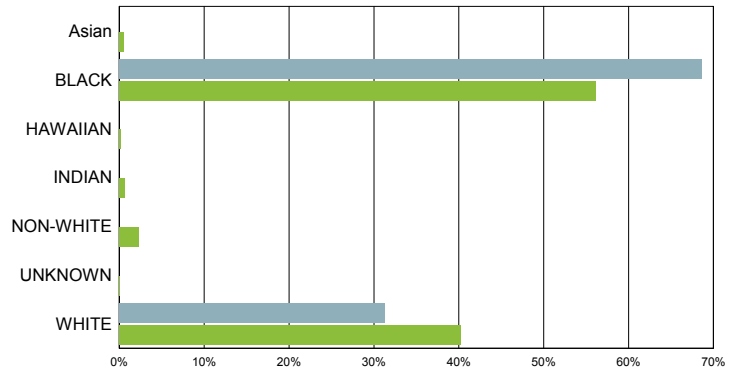
Characteristics of Unemployment Insurance Claimants

June 2015

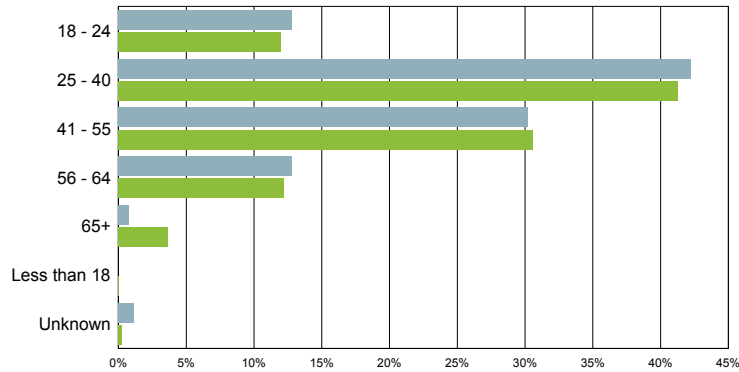
Gender	Darlington County	South Carolina
Female	146	6,786
Male	119	5,256



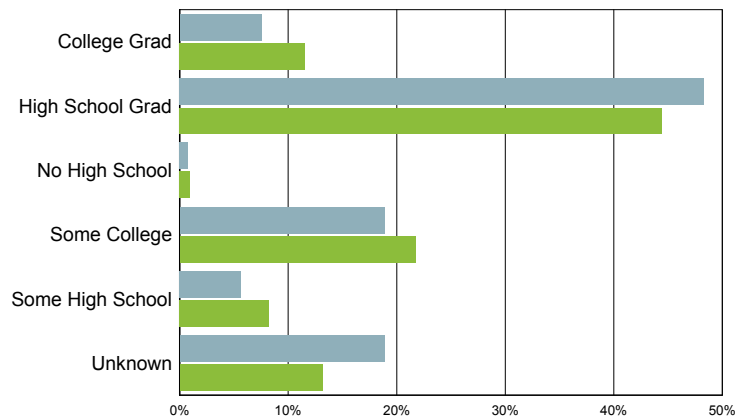
Race	Darlington County	South Carolina
Asian	0	63
BLACK	182	6,761
WHITE	83	4,850



Age Group	Darlington County	South Carolina
18 - 24	34	1,441
25 - 40	112	4,971
41 - 55	80	3,681
56 - 64	34	1,472
65+	2	436
Less than 18	0	8
Unknown	3	33



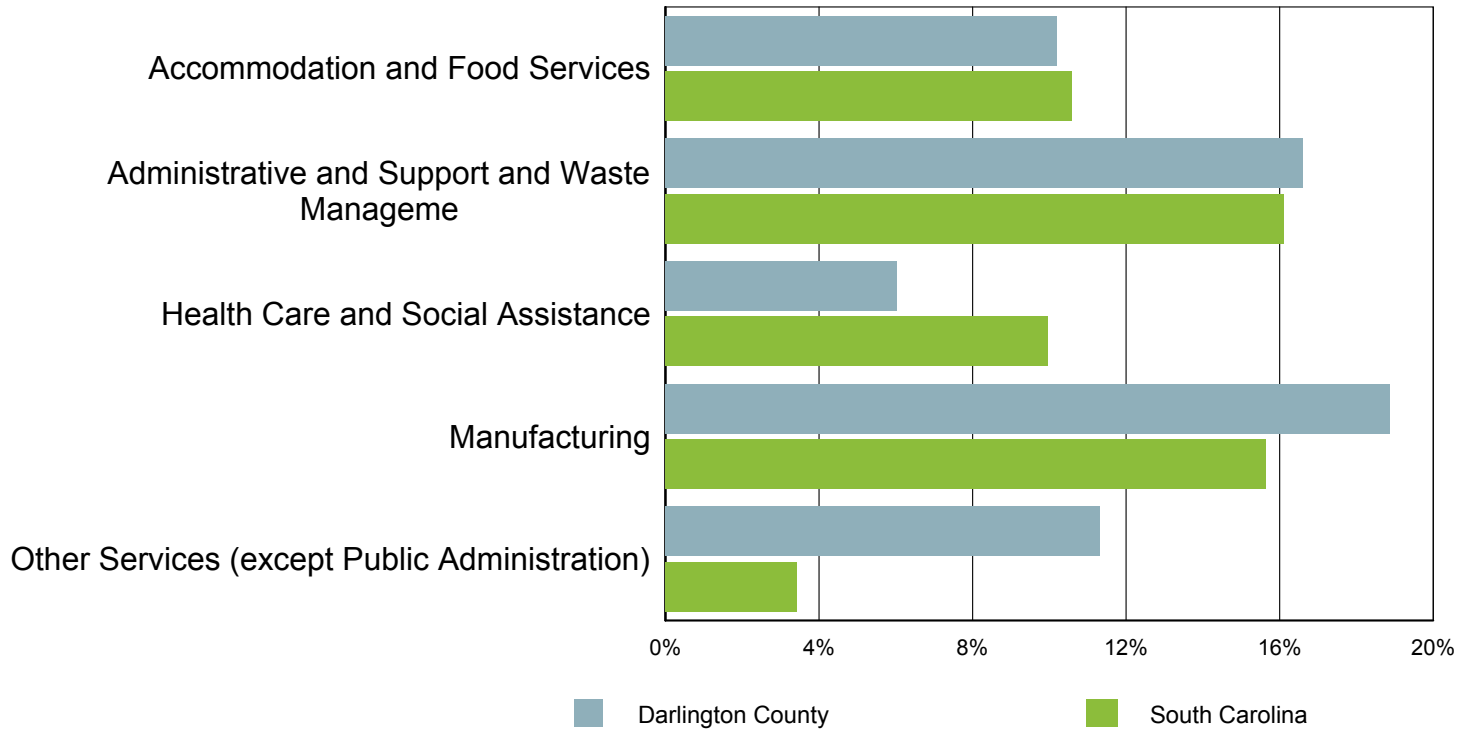
Education	Darlington County	South Carolina
College Grad	20	1,388
Some College	50	2,615
High School Grad	128	5,349
Some High School	15	991
No High School	2	114
Unknown	50	1,585



Source: S.C. Department of Employment & Workforce

Characteristics of Unemployment Insurance Claims by Industry

Industry Groups With Largest Number of Claims
June 2015

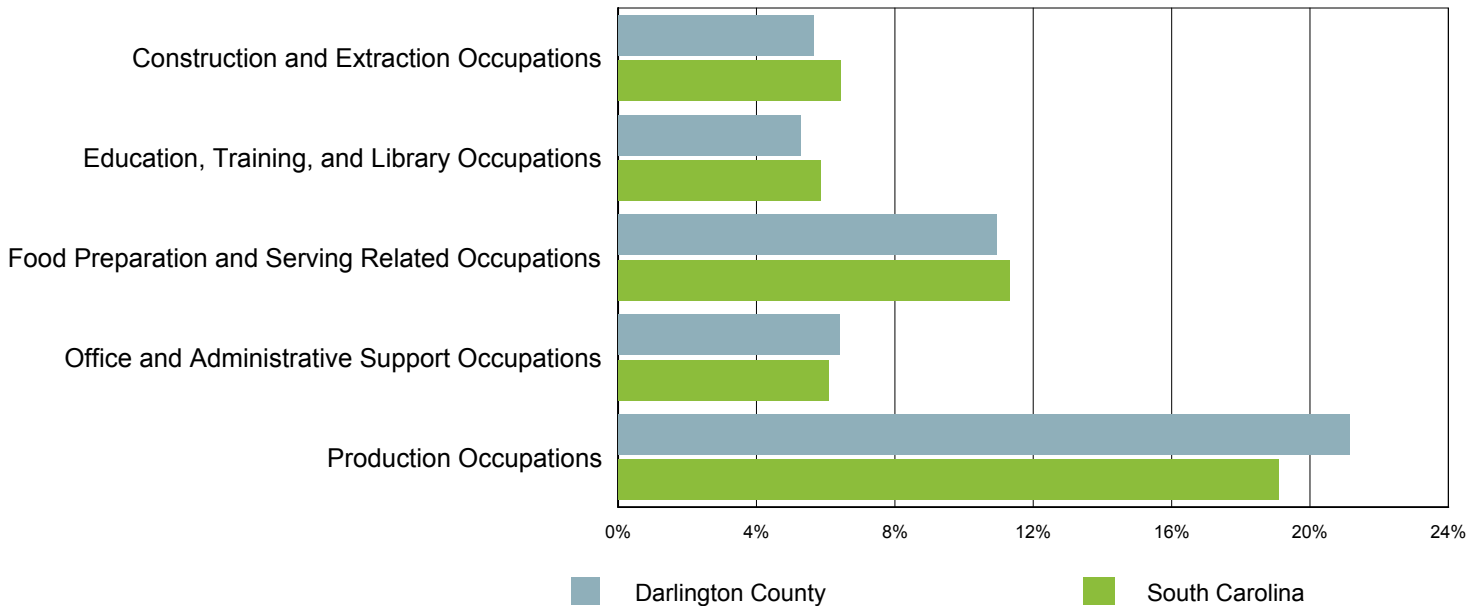


Industry	Darlington County	South Carolina
Agriculture, Forestry, Fishing and Hunting	1	65
Utilities	1	10
Construction	8	510
Manufacturing	50	1,885
Wholesale Trade	3	345
Retail Trade	16	1,077
Transportation and Warehousing	2	485
Finance and Insurance	12	220
Real Estate and Rental and Leasing	2	97
Professional, Scientific, and Technical Servi	2	474
Management of Companies and Enterprises	3	28
Administrative and Support and Waste Manageme	44	1,941
Educational Services	6	412
Health Care and Social Assistance	16	1,200
Arts, Entertainment, and Recreation	1	94
Accommodation and Food Services	27	1,275
Other Services (except Public Administration)	30	414
Public Administration	9	202
Unknown	32	1,225

Source: S.C. Department of Employment & Workforce

Characteristics of Unemployment Insurance Claims by Occupation

Occupation Groups With Largest Number of Claims
June 2015



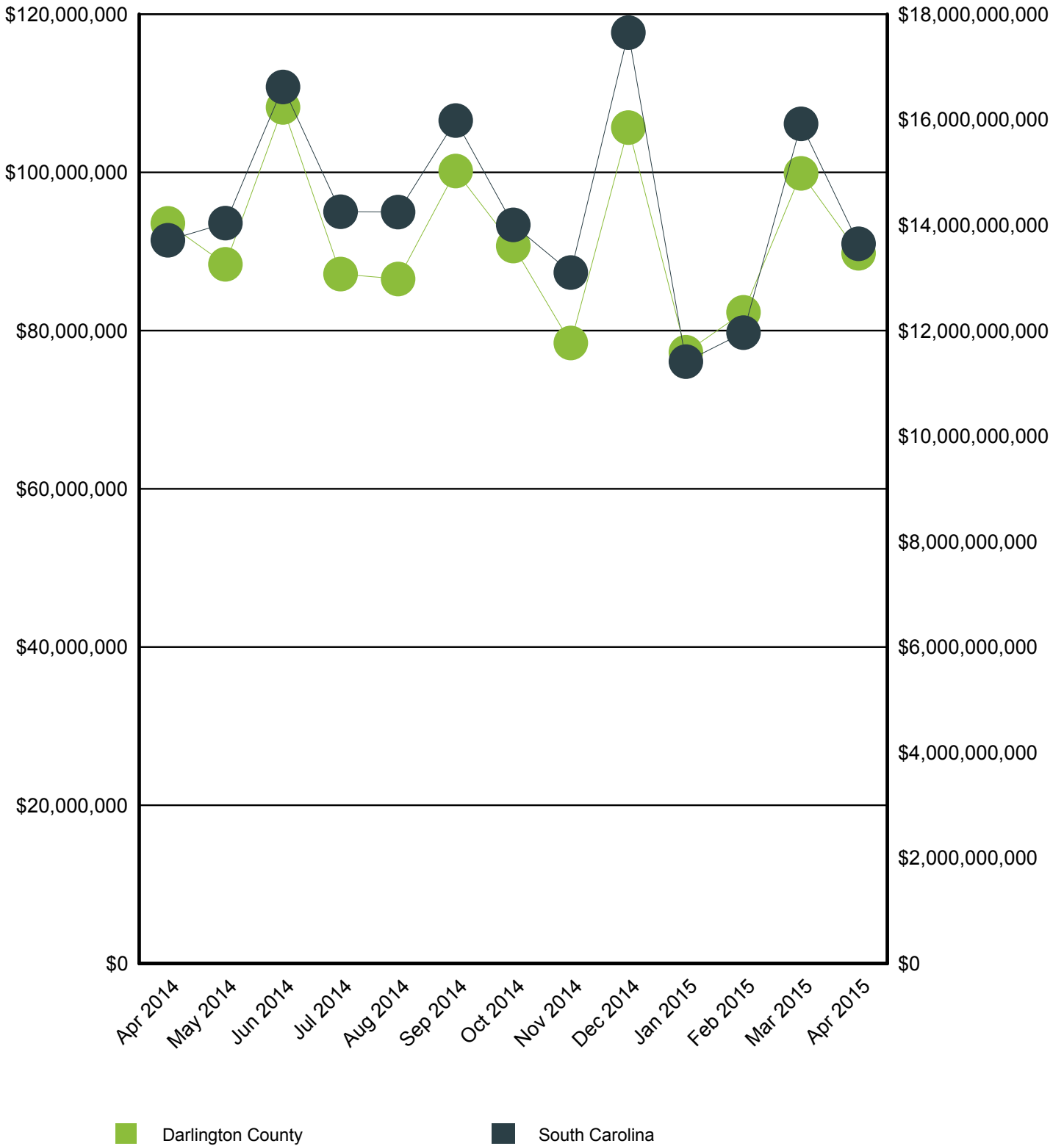
Occupation	Darlington County	South Carolina
Architecture and Engineering Occupations	1	141
Building and Grounds Cleaning and Maintenance Occu	9	490
Business and Financial Operations Occupations	13	367
Community and Social Service Occupations	7	121
Construction and Extraction Occupations	15	774
Education, Training, and Library Occupations	14	704
Farming, Fishing, and Forestry Occupations	1	72
Food Preparation and Serving Related Occupations	29	1,365
Healthcare Practitioners and Technical Occupations	3	204
Healthcare Support Occupations	7	427
Installation, Maintenance, and Repair Occupations	7	324
Legal Occupations	1	59
Management Occupations	11	561
Office and Administrative Support Occupations	17	732
Personal Care and Service Occupations	4	184
Production Occupations	56	2,301
Protective Service Occupations	7	146
Sales and Related Occupations	12	1,094
Transportation and Material Moving Occupations	4	535
Unknown	47	1,162

Source: S.C. Department of Employment & Workforce

Retail Sales

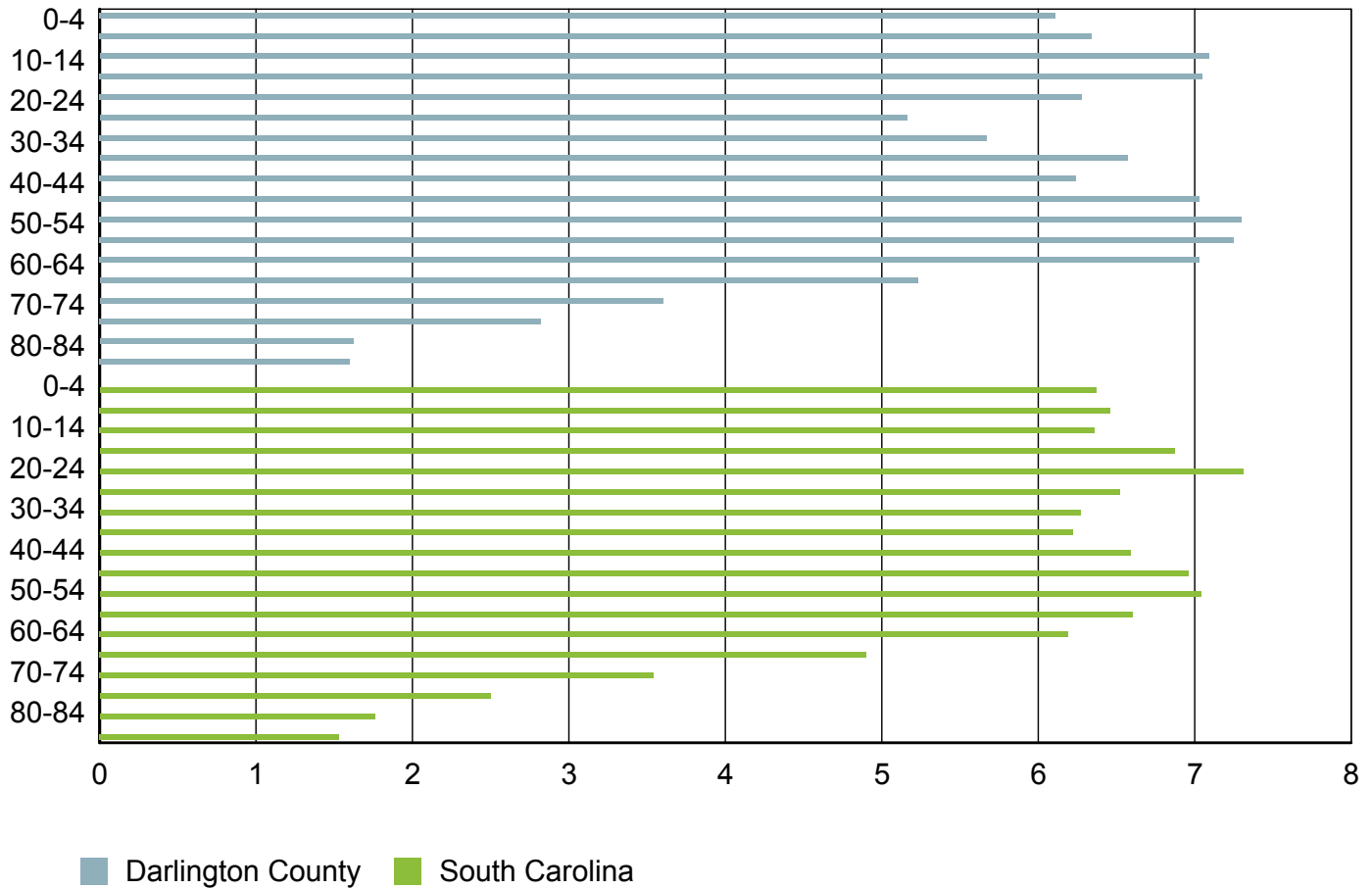
Darlington County

South Carolina



Source: S.C. Department of Revenue

Population by Age



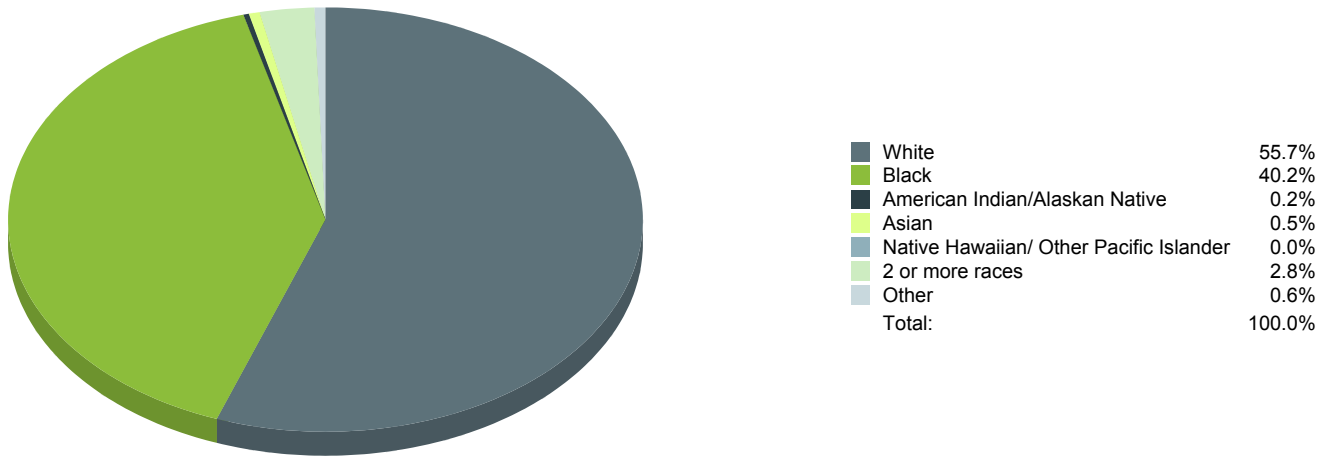
Age Range	Darlington County	South Carolina	United States
0-4	4,179	298,242	20,052,112
5-9	4,336	302,111	20,409,060
10-14	4,848	297,443	20,672,609
15-19	4,817	321,540	21,715,074
20-24	4,295	342,237	22,099,887
25-29	3,524	305,167	21,243,365
30-34	3,878	293,464	20,467,912
35-39	4,491	291,183	19,876,161
40-44	4,265	308,158	20,998,001
45-49	4,805	325,660	22,109,946
50-54	4,989	329,431	22,396,322
55-59	4,953	309,061	20,165,892
60-64	4,805	289,690	17,479,211
65-69	3,573	229,251	13,189,508
70-74	2,459	165,797	9,767,522
75-79	1,928	117,187	7,438,750
80-84	1,109	82,223	5,781,697
85 and older	1,092	71,757	5,673,565

Source: U.S. Census Bureau, American Community Survey

Population by Race

Race	Darlington County	%	South Carolina	%	United States	%
White	38,607	56.5%	3,144,146	66.0%	230,592,579	72.0%
Black	27,899	40.8%	1,298,534	27.3%	39,167,010	12.2%
American Indian/Alaskan Native	123	0.2%	14,732	0.3%	2,540,309	0.8%
Asian	318	0.5%	61,097	1.3%	15,231,962	4.8%
Native Hawaiian/ Other Pacific Islander	0	0.0%	2,128	0.0%	526,347	0.2%
2 or more races	1,950	2.9%	169,670	3.6%	17,464,666	5.5%
Other	424	0.6%	74,130	1.6%	14,746,054	4.6%

Source: U.S. Census Bureau, American Community Survey



Population by Gender

Gender	Darlington County	South Carolina	United States
Male	32,379	2,276,305	153,247,412
Female	35,967	2,403,297	158,289,182

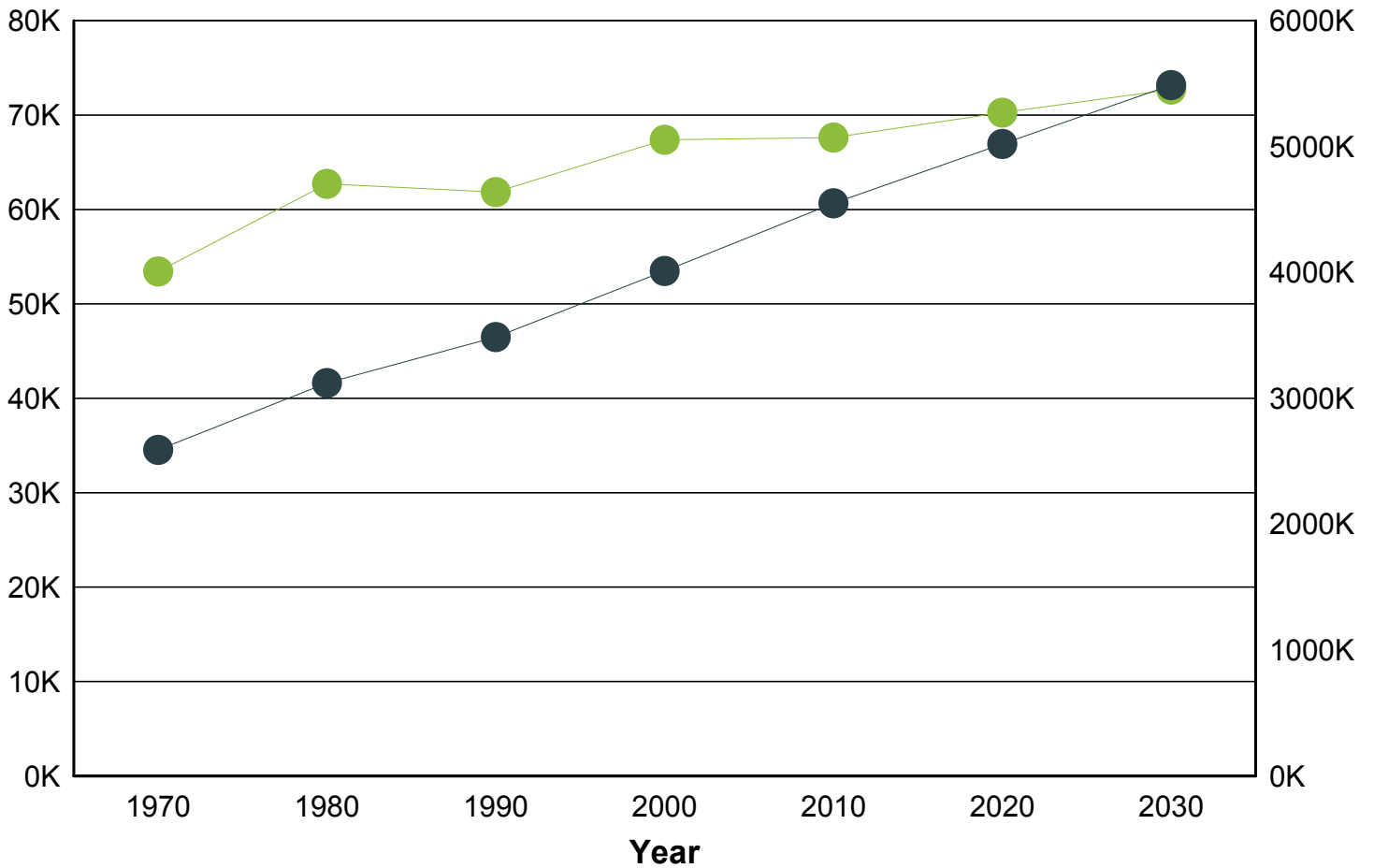
Source: U.S. Census Bureau, American Community Survey

Population Change

Historical and Projected

Darlington County

South Carolina

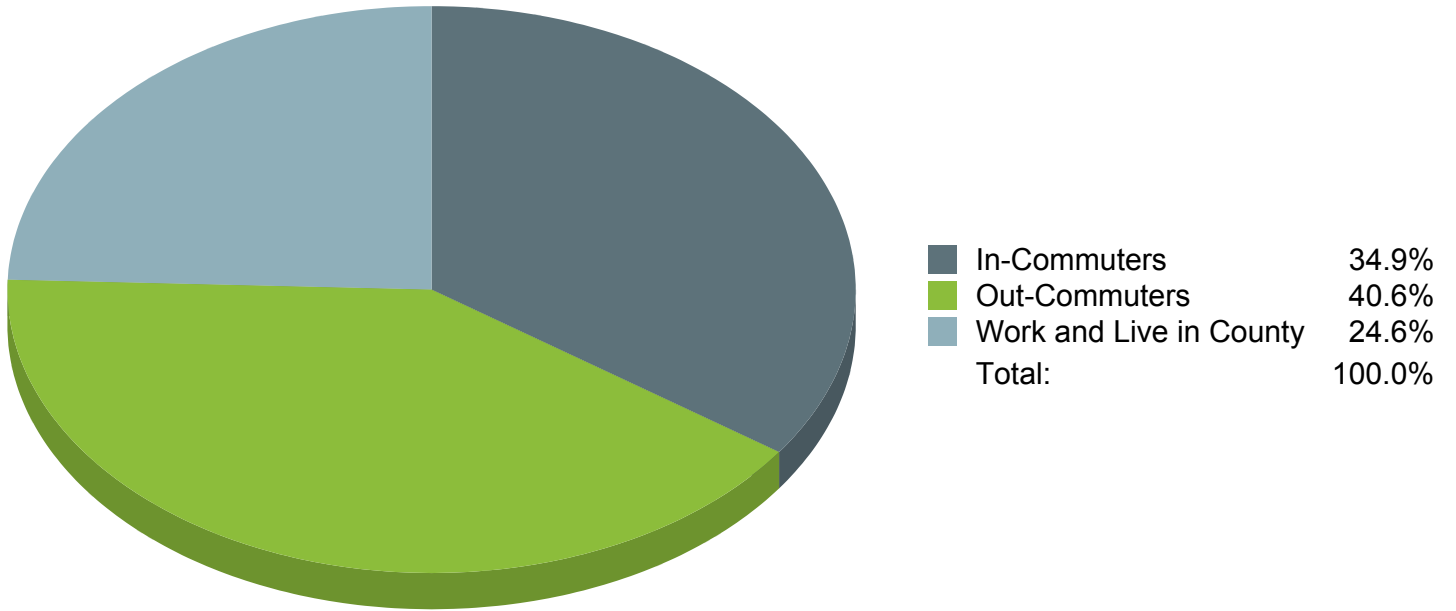


■ Darlington County
 ■ South Carolina

Year	Darlington County	South Carolina
1970	53,442	2,590,713
1980	62,717	3,121,820
1990	61,851	3,486,310
2000	67,394	4,012,012
2010	67,620	4,549,150
2020	70,260	5,020,400
2030	72,710	5,488,460

Source: U.S. Census Bureau

Commuting Patterns



Commuting Patterns	Workers
Work and Live in County	16,663
In-Commuters	23,639
Out-Commuters	27,513

Source: U.S. Census Bureau - 2010

Top 10 Places Residents Are Commuting To

Area	Workers
Florence County, SC	8,050
Chesterfield County, SC	881
Lee County, SC	363
Marlboro County, SC	278
Sumter County, SC	160
Richland County, SC	108
Kershaw County, SC	104
Lexington County, SC	103
Horry County, SC	70
WAKE COUNTY, NC	57

Source: U.S. Census Bureau - 2010

Top 10 Places Residents Are Commuting From

Area	Workers
Florence County, SC	3,212
Chesterfield County, SC	1,827
Lee County, SC	488
Kershaw County, SC	194
Marlboro County, SC	132
Horry County, SC	124
Richland County, SC	122
Sumter County, SC	113
LEE COUNTY, NC	80
Dillon County, SC	74

Source: U.S. Census Bureau - 2010

Employers by Size of Establishment

Employees	Darlington County	South Carolina
0 to 4	545	69,514
5 to 9	220	19,763
10 to 19	147	13,956
20 to 49	112	10,424
50 to 99	36	4,064
100 to 249	28	2,646
250 to 499	6	804
500 to 999	0	358
1000 +	0	297

Source: S.C. Department of Employment & Workforce - 2014 Q4
 - Indicates that the requested data is suppressed

Employment by Size of Establishment

Employees	Darlington County	South Carolina
0 to 4	949	107,690
5 to 9	1,434	131,062
10 to 19	2,011	189,845
20 to 49	3,483	319,353
50 to 99	2,589	279,664
100 to 249	4,036	394,860
250 to 499	2,201	277,249
500 to 999	0	243,066
1000 +	0	746,264

Source: S.C. Department of Employment & Workforce - 2014 Q4
 - Indicates that the requested data is suppressed

20 Largest Employers

(Listed Alphabetically)

Corporation Name

ADVANCED FACILITY SERVICES LLC

CARESOUTH CAROLINA INC

CITI TRENDS INC

COKER COLLEGE

DARLINGTON CNTY DISABILITIES & SPEC

DARLINGTON COUNTY

DARLINGTON COUNTY SCHOOL DISTRICT

DIXIE CONSUMER PRODUCTS LLC

DUKE ENERGY PROGRESS INC

GALEY & LORD INDUSTRIES LLC

HARTSVILLE HMA INC

MANHEIM REMARKETING INC

MOR PPM INC

MORRELL NURSING CENTER LLC

NUCOR CORPORATION

ROLLER BEARING CO. OF AMERICA INC.

SONOCO PRODUCTS COMPANY

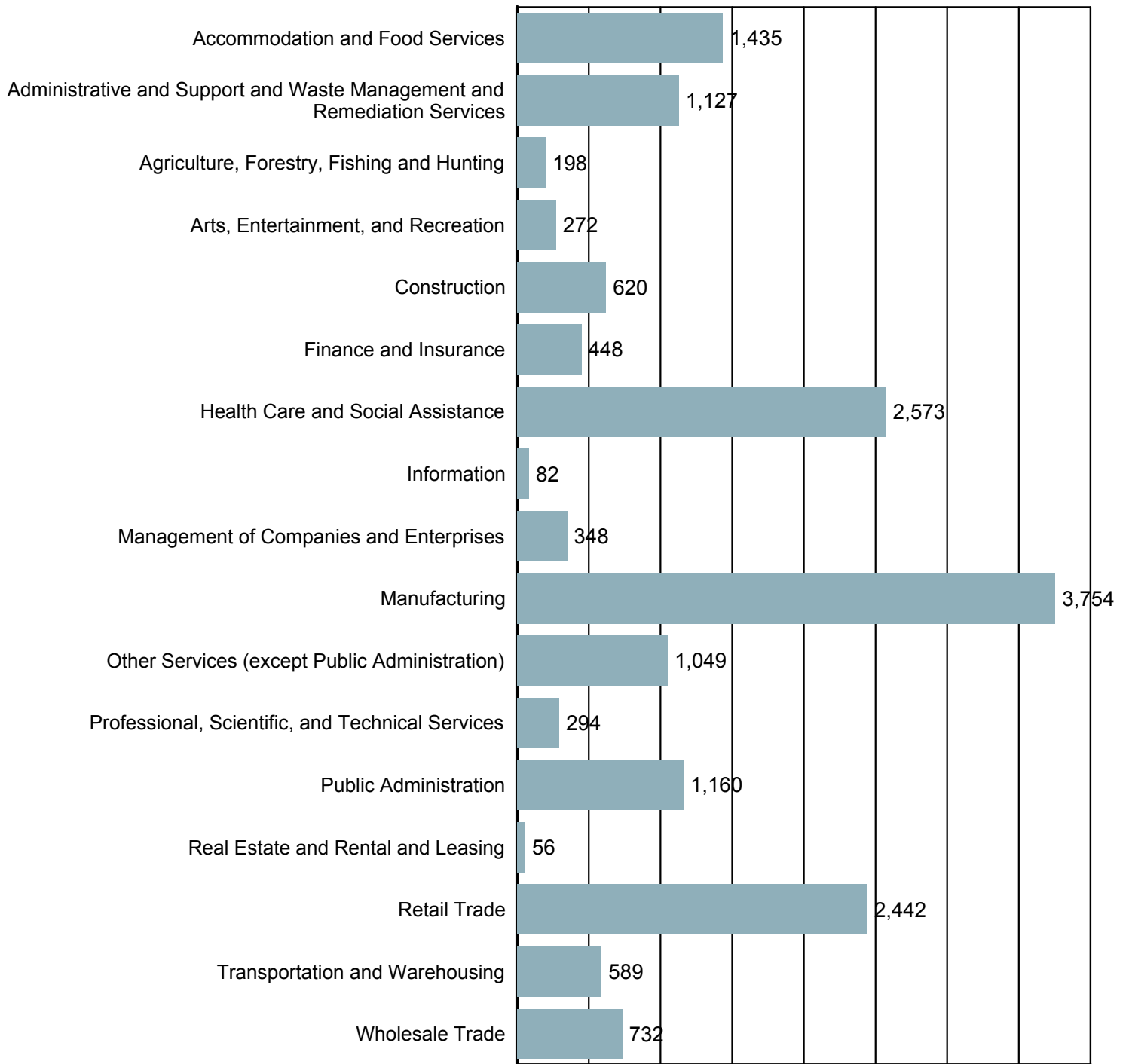
UNITED PARCEL SERVICE

WAL-MART ASSOCIATES INC

WEST OIL COMPANY INC

Source: S.C. Department of Employment & Workforce - 2014 Q4

Employment by Industry

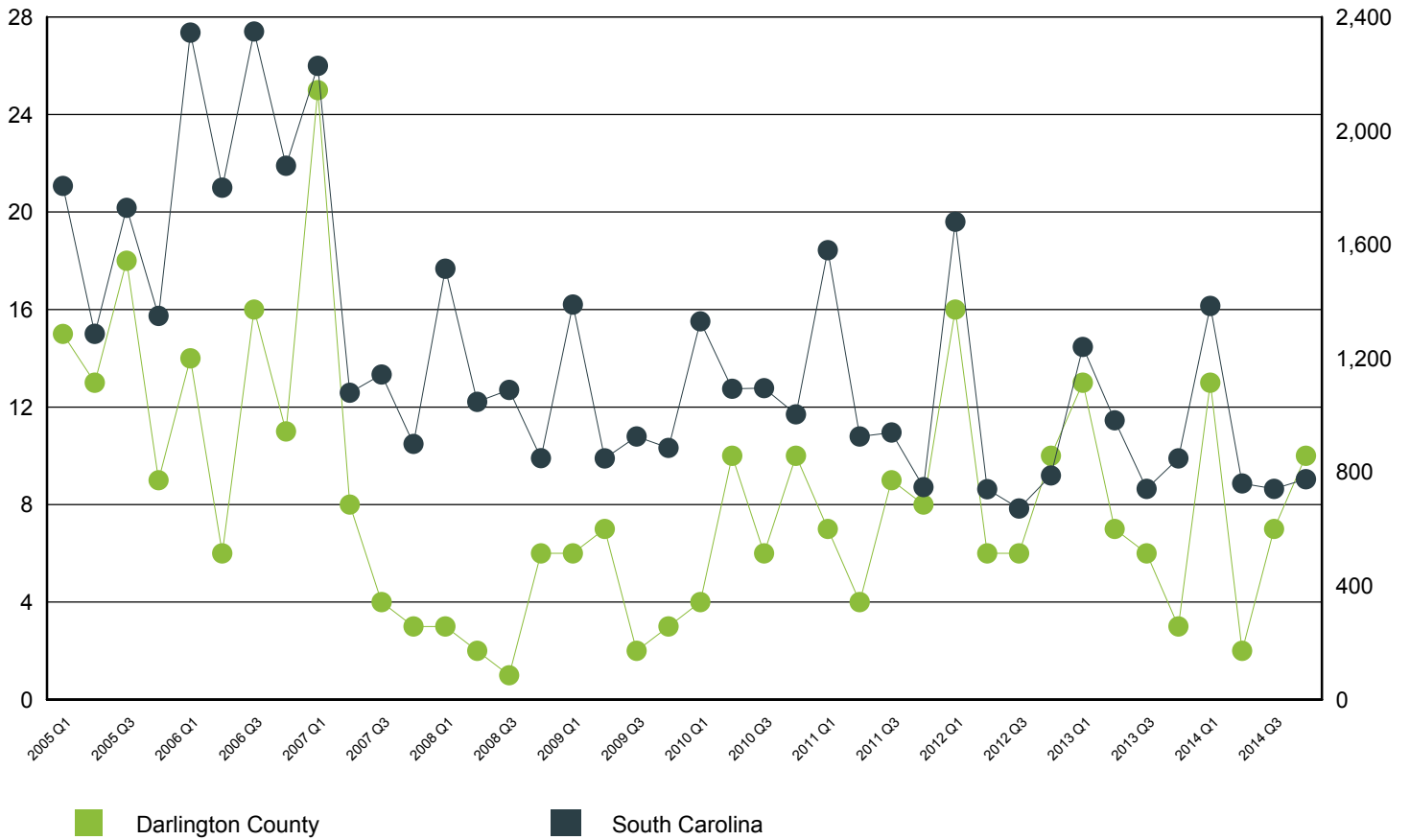


Source: S.C. Department of Employment & Workforce
 Quarterly Census of Employment and Wages (QCEW) - 2014 Q4

New Startup Firms

Darlington County

South Carolina



Quarter	Darlington County	South Carolina
2014 Q4	10	775
2014 Q3	7	741
2014 Q2	2	760
2014 Q1	13	1,384
2013 Q4	3	848
2013 Q3	6	741
2013 Q2	7	982
2013 Q1	13	1,240
2012 Q4	10	788
2012 Q3	6	672
2012 Q2	6	740
2012 Q1	16	1,680
2011 Q4	8	747
2011 Q3	9	939
2011 Q2	4	925
2011 Q1	7	1,580
2010 Q4	10	1,003
2010 Q3	6	1,095
2010 Q2	10	1,093
2010 Q1	4	1,330

Note: A firm is included in the count when it does not have a UI Account Number in the previous quarter and has a Setup Date that falls in the quarter displayed.

Source: S.C. Department of Employment & Workforce

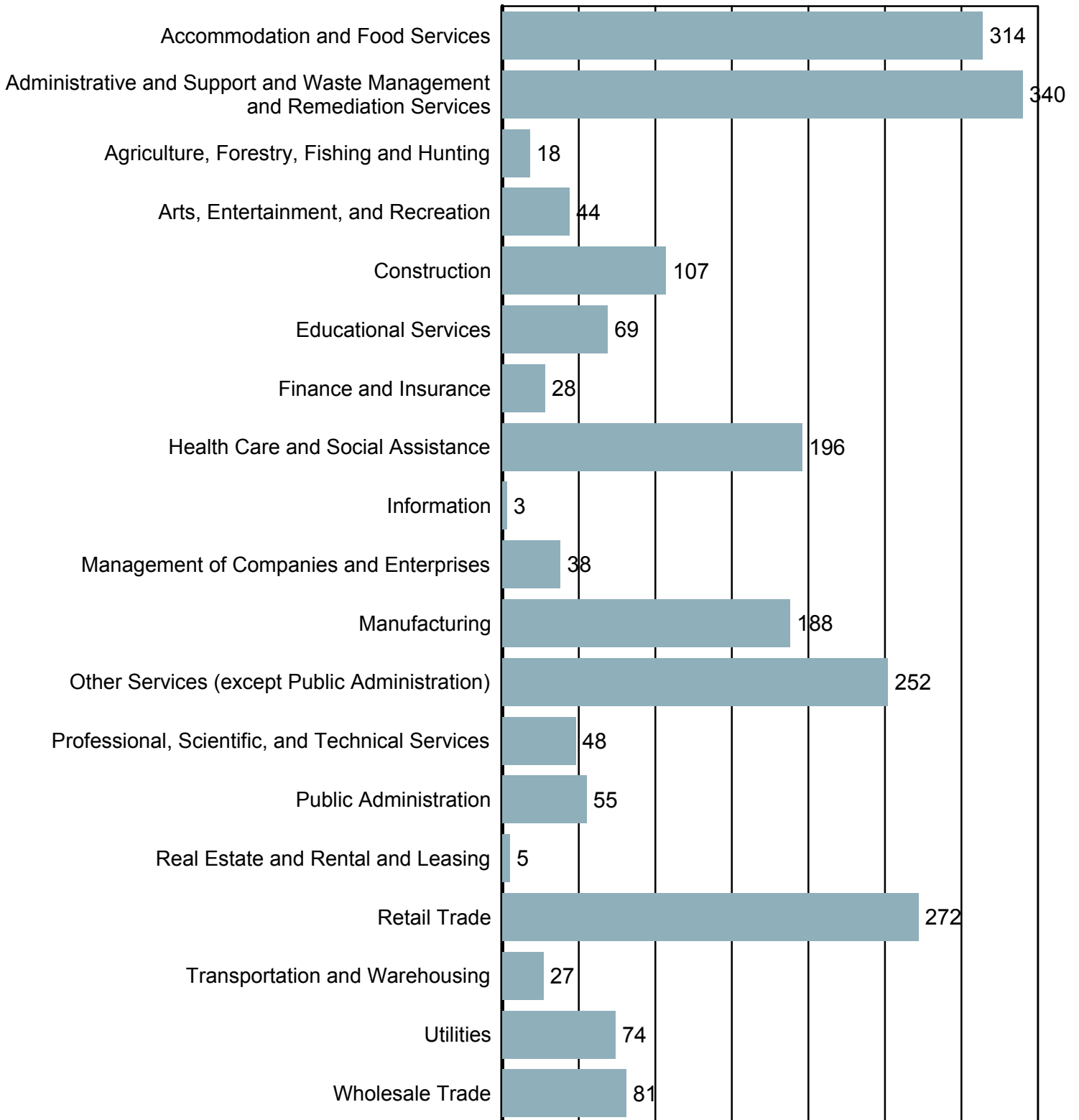
Top 20 Occupational Openings

*Darlington County
June-2015*

Occupation Name (Soccode)	Job Openings
Heavy and Tractor-Trailer Truck Drivers (53-3032)	55
Occupational Therapists (29-1122)	27
Physical Therapists (29-1123)	16
Registered Nurses (29-1141)	10
Nuclear Engineers (17-2161)	9
Social and Human Service Assistants (21-1093)	9
First-Line Supervisors of Mechanics, Installers, and Repairers (49-1011)	8
First-Line Supervisors of Production and Operating Workers (51-1011)	8
Executive Secretaries and Executive Administrative Assistants (43-6011)	7
First-Line Supervisors of Retail Sales Workers (41-1011)	7
Food Service Managers (11-9051)	7
Human Resources Managers (11-3121)	7
Industrial Engineers (17-2112)	7
Light Truck or Delivery Services Drivers (53-3033)	7
Telecommunications Equipment Installers and Repairers, Except Line Installers (49-2022)	7
Accountants and Auditors (13-2011)	6
Advertising Sales Agents (41-3011)	6
Customer Service Representatives (43-4051)	6
Maintenance and Repair Workers, General (49-9071)	6
Retail Salespersons (41-2031)	6

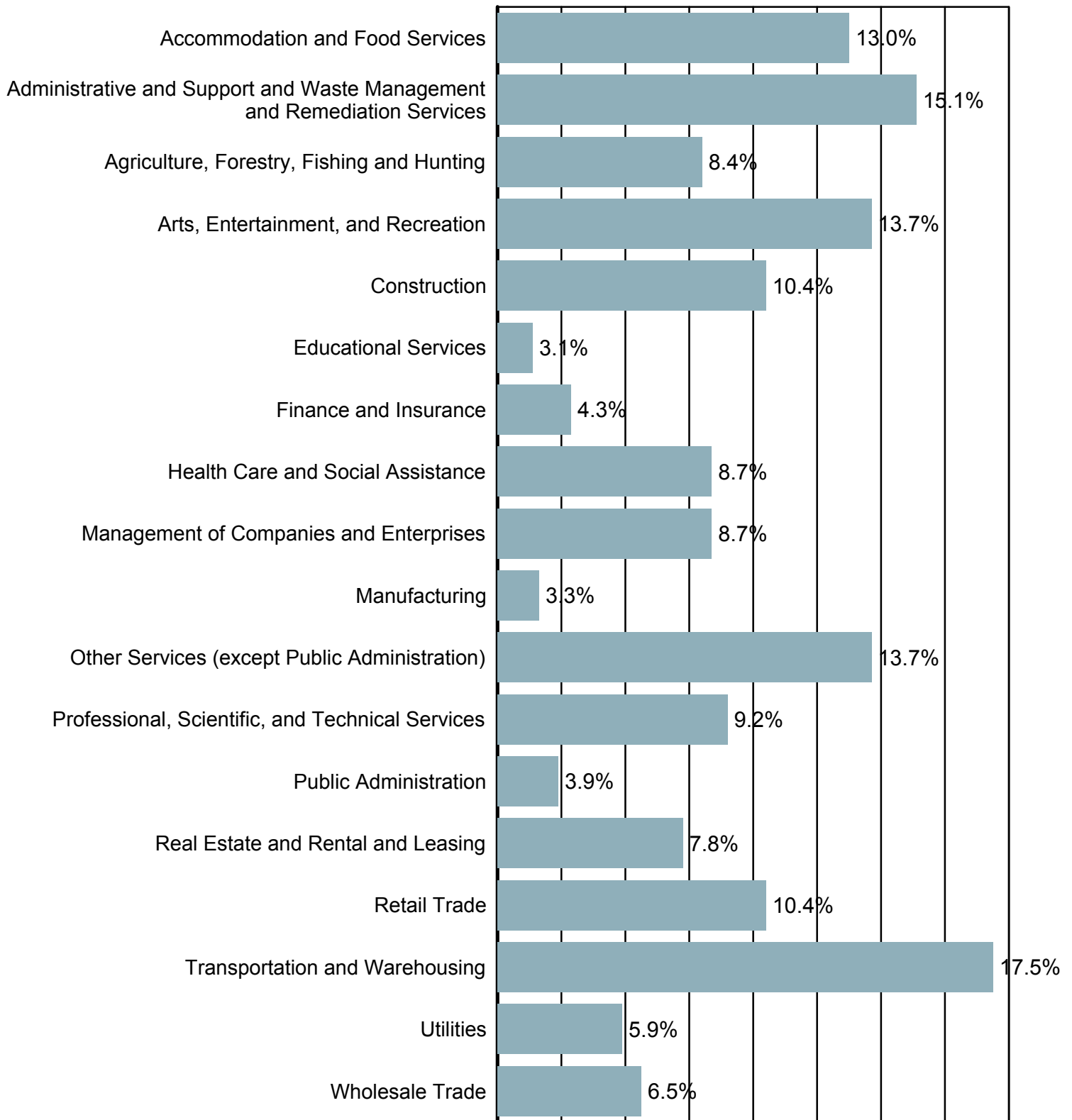
Source: S.C. Department of Employment & Workforce & The Conference Board's Help Wanted OnLine® data series

New Hires by Industry



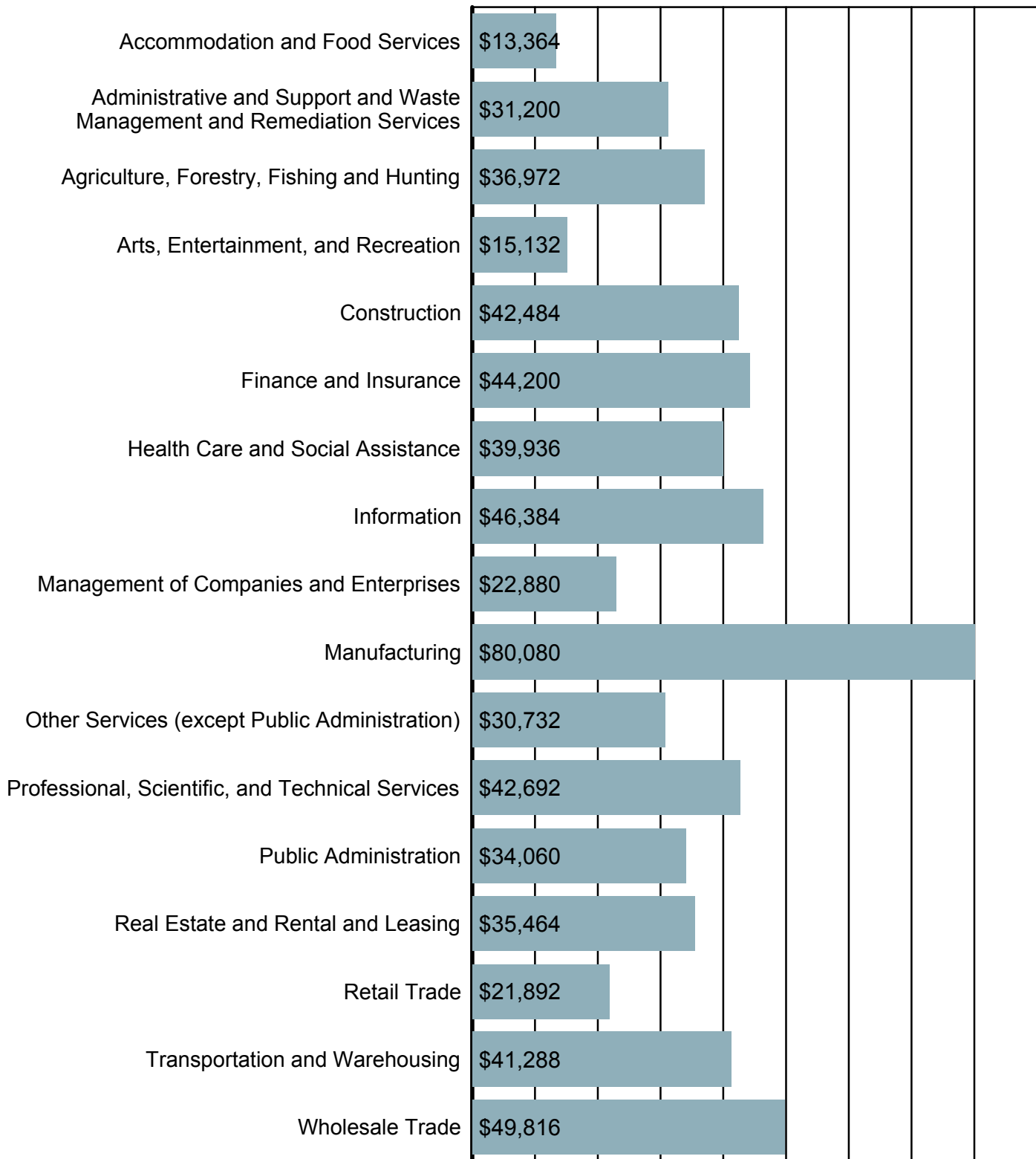
Source: U.S. Census Bureau, Local Employment Dynamics - 2014 Q1

Turnover by Industry



Source: U.S. Census Bureau, Local Employment Dynamics - 2013 Q3

Average Annual Wage by Industry



Source: S.C. Department of Employment & Workforce
 Quarterly Census of Employment and Wages (QCEW) - 2014 Q4

Age of Workers by Industry

Industry	14-18	19-21	22-24	25-34	35-44	45-54	55-64	65+
Total, All Industries	260	750	1,035	3,513	4,402	4,622	3,530	1,080
Agriculture, Forestry, Fishing and Hunting	0	8	6	31	44	50	44	23
Utilities	0	9	19	162	162	232	154	8
Construction	5	14	27	124	143	170	112	34
Manufacturing	5	28	100	645	1,073	1,267	890	146
Wholesale Trade	0	8	27	138	254	252	200	151
Retail Trade	89	202	215	458	441	424	319	121
Transportation and Warehousing	0	17	17	66	107	112	76	22
Information	0	0	3	13	14	12	7	4
Finance and Insurance	0	9	23	98	97	95	81	34
Real Estate and Rental and Leasing	0	0	0	10	15	14	15	6
Professional, Scientific, and Technical Servi	3	13	17	61	81	64	66	32
Management of Companies and Enterprises	4	13	26	78	75	67	43	25
Administrative and Support and Waste Manageme	5	49	82	214	234	230	195	73
Educational Services	7	65	89	266	420	451	434	111
Health Care and Social Assistance	7	70	128	552	619	546	392	96
Arts, Entertainment, and Recreation	20	21	23	51	57	61	36	11
Accommodation and Food Services	102	188	173	309	226	178	134	65
Other Services (except Public Administration)	3	28	39	144	192	209	183	81
Public Administration	0	4	22	95	151	187	148	36

Source: U.S. Census Bureau, Local Employment Dynamics - 2014 Q1

Labor Market Projections

Total Employment by Industry
(County/Metropolitan Statistical Area Data Unavailable)

Note: Projections are available by Workforce Investment Area (WIA). The data displayed is selected from the appropriate WIA.

Pee Dee Industry	2012 Estimated Employment	2022 Projected Employment	Change	Percent Change	Annual Percent
Total Employment, All Jobs	126,589	140,842	14,253	11.26	1.07
Health care and social assistance	18,789	23,713	4,924	26.21	2.35
Administrative and support and waste management and remediat	3,764	5,143	1,379	36.64	3.17
Retail Trade	14,854	16,002	1,148	7.73	0.75
Educational services; state, local, and private	10,124	11,259	1,135	11.21	1.07
Accommodation and food services	9,741	10,642	901	9.25	0.89
Construction	2,939	3,702	763	25.96	2.33
Transportation and Warehousing	4,290	4,962	672	15.66	1.47
Wholesale trade	4,076	4,725	649	15.92	1.49
Other services (except public administration)	5,217	5,773	556	10.66	1.02
Finance and insurance	4,884	5,406	522	10.69	1.02
Manufacturing	19,461	19,780	319	1.64	0.16
Government	9,557	9,823	266	2.78	0.27
Real estate and rental and leasing	835	952	117	14.01	1.32
Arts, entertainment, and recreation	1,008	1,118	110	10.91	1.04
Utilities	922	997	75	8.13	0.79
Information	1,006	1,060	54	5.37	0.52

Source: S.C. Department of Employment & Workforce - Industry Projections

Labor Market Projections

Total Employment by Occupation
(County/Metropolitan Statistical Area Data Unavailable)

Note: Projections are available by Workforce Investment Area (WIA). The data displayed is selected from the appropriate WIA.

Pee Dee Occupation	2012 Estimated Employment	2022 Projected Employment	Annual Openings	Openings (Replace)	Openings (Growth)
Total, all occupations	126,589	140,842	2,966	1,545	4,511
Management occupations	7,317	7,408	138	54	192
Business and financial operations occupations	3,653	4,128	77	50	127
Computer and mathematical occupations	1,546	1,888	26	34	60
Architecture and engineering occupations	1,284	1,356	31	8	39
Life, physical, and social science occupations	476	491	14	3	17
Community and social service occupations	2,824	3,212	66	39	105
Legal occupations	579	657	9	8	17
Education, training, and library occupations	7,272	8,165	158	89	247
Arts, design, entertainment, sports, and media occupations	902	997	20	10	30
Healthcare practitioners and technical occupations	9,015	10,945	182	193	375
Healthcare support occupations	4,571	5,943	88	138	226
Protective service occupations	2,902	3,206	85	31	116
Food preparation and serving related occupations	10,027	10,964	354	97	451
Building and grounds cleaning and maintenance occupations	4,271	5,079	87	81	168
Personal care and service occupations	3,266	3,944	64	70	134
Sales and related occupations	12,770	13,719	413	95	508
Office and administrative support occupations	18,187	20,021	394	199	593
Farming, fishing, and forestry occupations	2,838	2,940	77	15	92
Construction and extraction occupations	3,748	4,452	63	70	133
Installation, maintenance, and repair occupations	5,186	5,683	121	52	173
Production occupations	14,672	15,198	282	93	375
Transportation and material moving occupations	9,283	10,446	216	117	333

Source: S.C. Department of Employment & Workforce - Occupational Projections

Labor Market Projections

Growing Occupations
(County/Metropolitan Statistical Area Data Unavailable)

Note: Projections are available by Workforce Investment Area (WIA). The data displayed is selected from the appropriate WIA.

Pee Dee Occupation	2012 Estimated Employment	2022 Projected Employment	Percent Change	Replace	Growth	Total	Average Salary
Home health aides	905	1,412	56	17	51	68	\$ 19,151
Computer numerically controlled machine tool programmers, me	12	18	50	0	1	1	\$ 43,794
Personal care aides	930	1,358	46	7	43	50	\$ 18,837
Diagnostic medical sonographers	48	69	44	1	2	3	\$ 50,431
Information security analysts	39	55	41	1	2	3	\$ 45,546
Skincare specialists	25	35	40	0	1	1	\$ 29,786
Market research analysts and marketing specialists	109	148	36	2	4	6	\$ 54,344
Helpers--electricians	70	95	36	1	2	3	\$ 24,098
Dental hygienists	114	154	35	3	4	7	\$ 47,989
Medical secretaries	685	925	35	8	24	32	\$ 28,600
Medical and clinical laboratory technicians	155	209	35	4	5	9	\$ 40,441
Mental health counselors	26	35	35	1	1	2	\$ 40,388
Paving, surfacing, and tamping equipment operators	121	160	32	2	4	6	\$ 23,372
Operations research analysts	95	125	32	2	3	5	\$ 76,856
Computer user support specialists	341	448	31	5	11	16	\$ 42,382
Physical therapists	162	212	31	4	5	9	\$ 88,156
Medical assistants	322	420	30	6	10	16	\$ 27,890
Physical therapist assistants	67	87	30	2	2	4	\$ 57,587
Healthcare social workers	127	164	29	3	4	7	\$ 50,553
Physical therapist aides	35	45	29	1	1	2	\$ 22,300

Occupations are sorted by highest estimated percentage growth from estimate year to projection year.

Source: S.C. Department of Employment & Workforce - Occupational Projections

Labor Market Projections

Declining Occupations

(County/Metropolitan Statistical Area Data Unavailable)

Note: Projections are available by Workforce Investment Area (WIA). The data displayed is selected from the appropriate WIA.

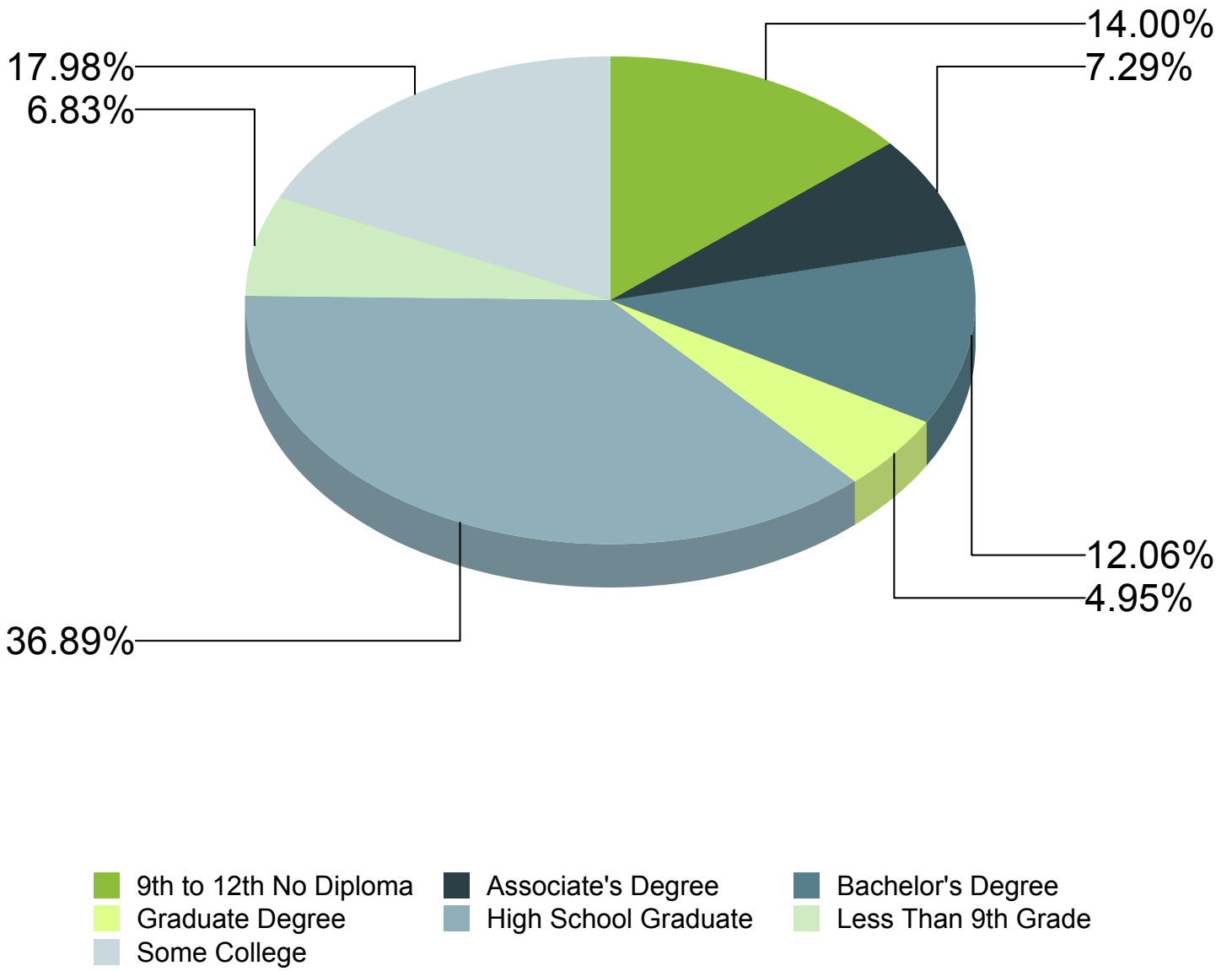
Occupation	2012	2022	Percent Change	Replace	Growth	Total	Average Salary
	Estimated Employment	Projected Employment					
Fallers	52	34	-35	1	0	1	\$ 32,585
Log graders and scalers	66	47	-29	1	0	1	\$ 28,690
Postal service clerks	73	57	-22	1	0	1	\$ 48,433
Postal service mail sorters, processors, and processing mach	119	96	-19	1	0	1	\$ 47,118
Textile winding, twisting, and drawing out machine setters,	839	686	-18	14	0	14	\$ 25,395
Mail clerks and mail machine operators, except postal servic	105	87	-17	2	0	2	\$ 24,248
Funeral attendants	96	80	-17	2	0	2	\$ 24,533
Data entry keyers	102	86	-16	1	0	1	\$ 27,026
Postal service mail carriers	309	261	-16	11	0	11	\$ 50,053
Extruding and drawing machine setters, operators, and tender	292	253	-13	6	0	6	\$ 42,763
Computer operators	40	35	-13	0	0	0	\$ 39,515
Postmasters and mail superintendents	32	28	-13	1	0	1	\$ 67,287
Pressers, textile, garment, and related materials	71	63	-11	1	0	1	\$ 17,294
Sewing machine operators	180	161	-11	1	0	1	\$ 22,420
Switchboard operators, including answering service	113	102	-10	2	0	2	\$ 24,089
Lathe and turning machine tool setters, operators, and tende	34	31	-9	1	0	1	\$ 33,196
Floral designers	49	45	-8	1	0	1	\$ 24,787
Multiple machine tool setters, operators, and tenders, metal	80	74	-8	2	0	2	\$ 36,940
Information and record clerks, all other	31	29	-6	1	0	1	\$ 34,556
Electrical and electronics repairers, commercial and industr	31	29	-6	1	0	1	\$ 66,852

Occupations are sorted by highest estimated percentage decline from estimate year to projection year.

Source: S.C. Department of Employment & Workforce - Occupational Projections

Educational Attainment

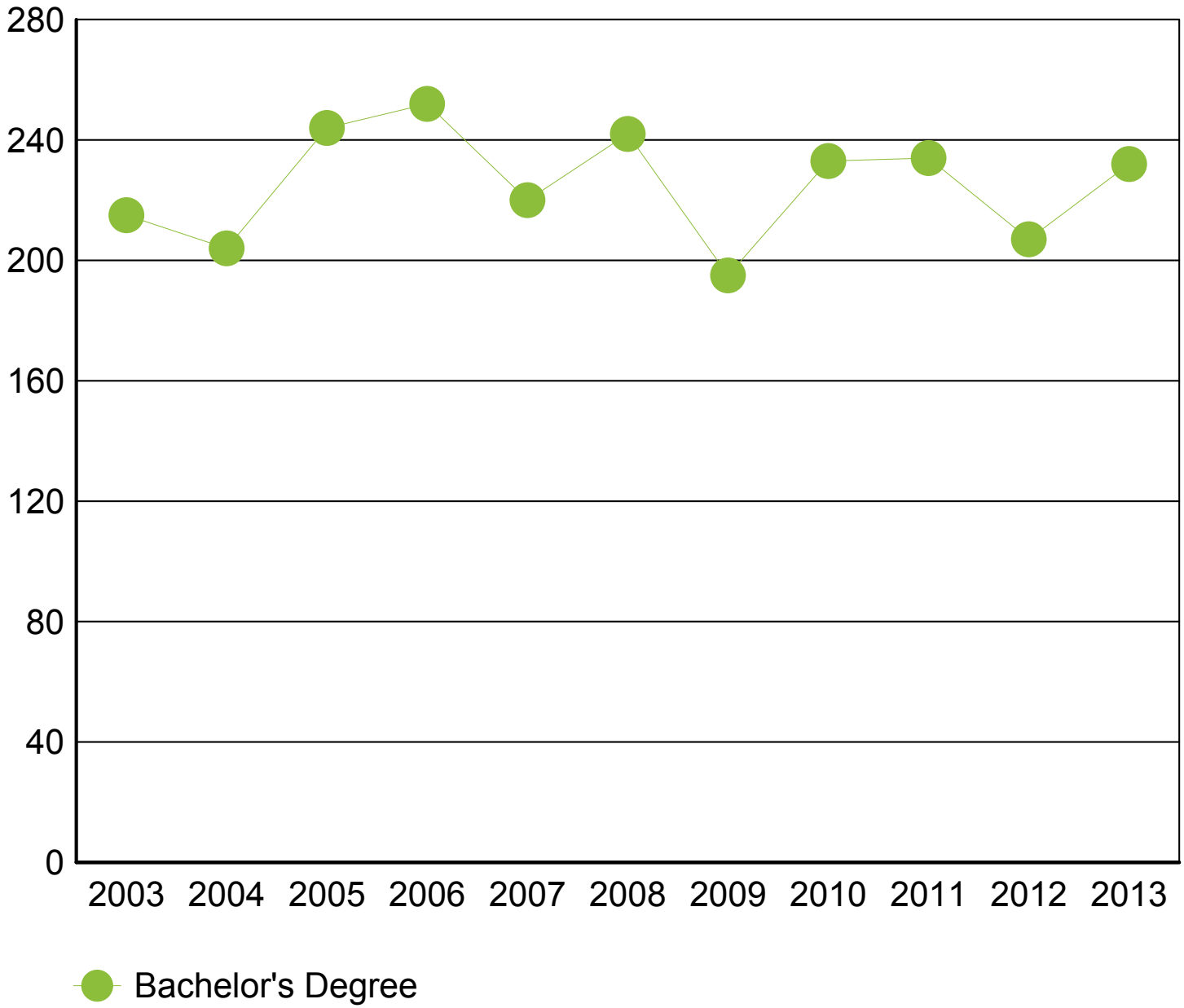
(Population 25 Years and Older)



Source: U.S. Census Bureau, American Community Survey - 2013 5-Year Estimates

Graduate Trends

(Based On Graduates From Area Schools)



Source: Institute of Education Sciences (IES), Integrated Postsecondary Education Data System

Educational Institutions

Coker College
300 E College Ave
Hartsville, SC 29550
843.383.8000
<http://www.coker.edu>
2013 Degrees Awarded: 232

Source: Institute of Education Sciences (IES), Integrated Postsecondary Education Data System