

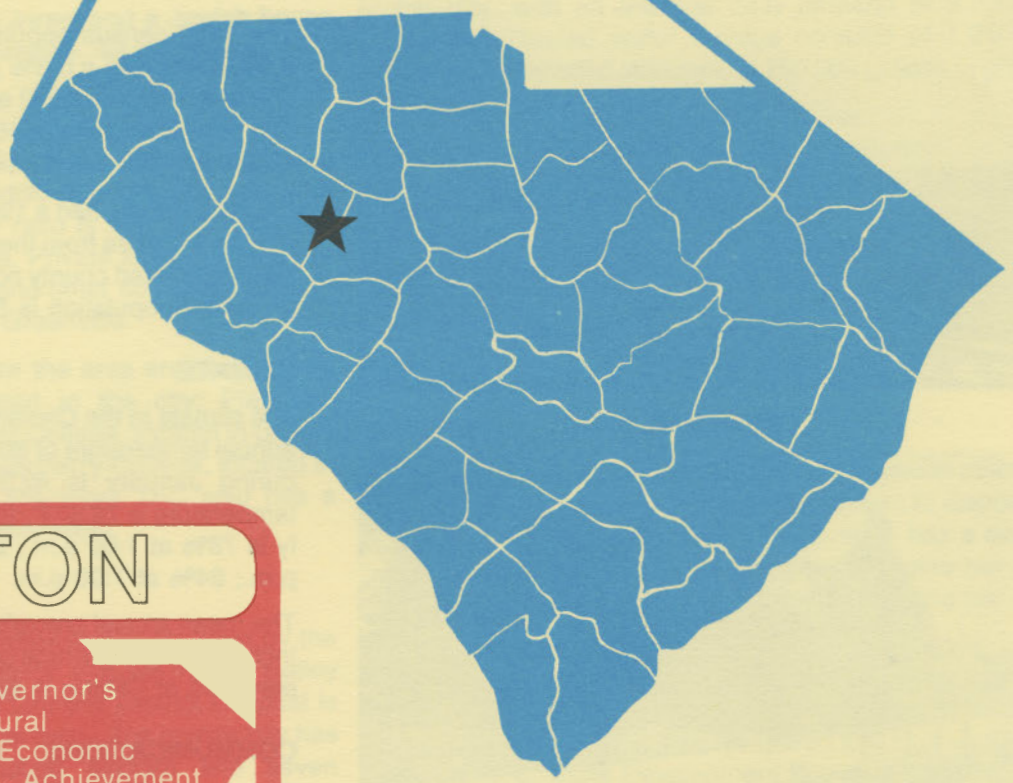
D4925  
2.C54  
1985  
Copy 1

# CLINTON

# south carolina



S. C. STATE LIBRARY  
DEC 1 1 1985  
STATE DOCUMENTS



CLINTON

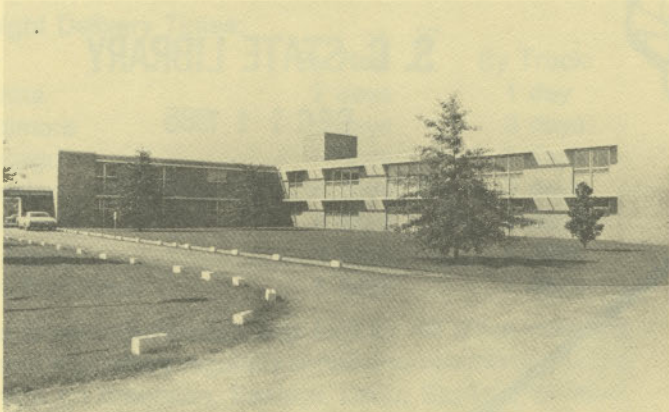
IS  
A  
GREAT  
TOWN

Governor's  
Rural  
Economic  
Achievement  
Trophy

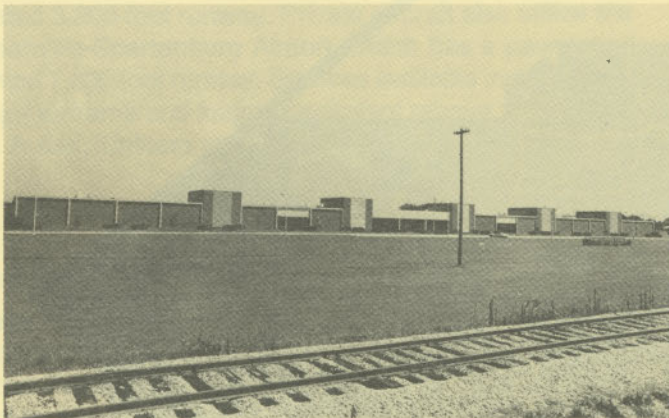
A red award logo consisting of a rounded rectangular border. Inside the border, the word "CLINTON" is at the top. Below it, the words "IS A GREAT TOWN" are stacked vertically. To the right of this text is a silhouette of the state of South Carolina, which serves as the background for the text "Governor's Rural Economic Achievement Trophy".



Belk Auditorium, Presbyterian College



Bailey Memorial Hospital



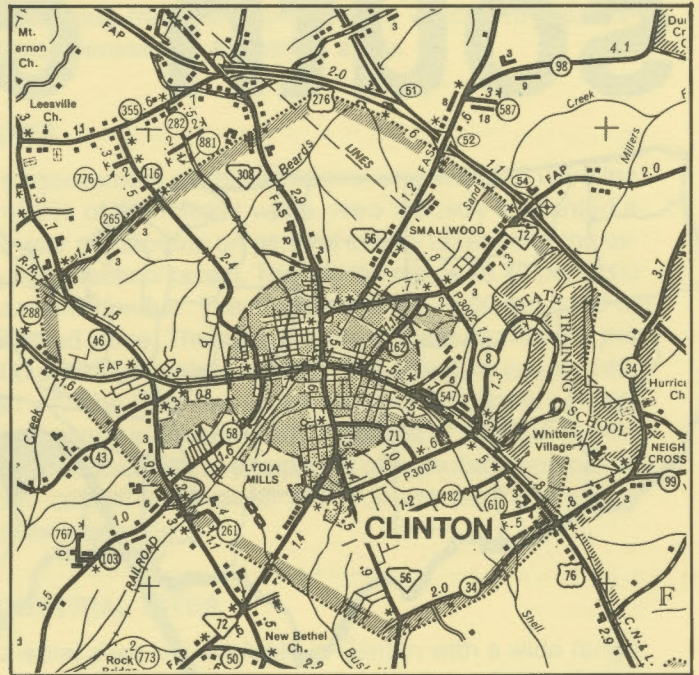
Clinton Mills, Inc.



City Hall

## LOCATION

As depicted on the cover, Clinton is in the northwestern section of the state in Laurens County. Charleston, South Carolina's busiest port, is 168 miles southeast. Columbia is 60 miles southeast and Greenville is 42 miles northwest. Clinton is 173 miles east of Atlanta; 713 miles south of New York; and 2,696 miles east of San Francisco.



## POPULATION

The 1980 census population of the city of Clinton was 8,596. This was a 5.6% increase from the 1970 population of 8,138. The 1982 estimated population was 8,579. The population within a 15-mile radius is 51,517 and within a 30-mile radius is 236,868.

Laurens County had a 1980 census population of 52,214, a 5.0% increase from the 1970 population of 49,713. The 1985 estimated county population is 54,200 and the 1990 projected population is 55,300.

## CLIMATE

The climate in the Clinton area is temperate with a mean annual temperature of 60.6° F. The average temperature during January is 42.3° F, while the average July temperature is 78.3° F. The average relative humidity daily is 78% at 1:00 a.m.; 82% at 7:00 a.m.; 54% at 1:00 p.m.; 64% at 7:00 p.m.

The mean annual precipitation in the Clinton area is 47.54 inches and the average growing season is 229 days. The elevation of Clinton is 687 feet above sea level.

## COMMUNICATIONS

The weekly *Clinton Chronicle* is published in the city, and three daily papers circulate in the community. Radio stations WPCC-AM (Clinton) and WLBG-AM (Laurens) provide local broadcast coverage. Television reception is available from six stations, representing the three major networks, and educational television. Telephone service

in the community is provided by Southern Bell of BellSouth Corporation.



## GOVERNMENT

The community has a council-manager form of municipal government. The six city council members and the mayor are elected for four-year terms. Laurens County is governed locally by a council whose five members are elected for four-year terms.

## POLICE AND FIRE

The Clinton Police Department has 24 full-time police officers. The department operates eight radio equipped patrol cars. The fire department has 12 full-time and 24 volunteer firemen who operate four pumper trucks. Clinton's insurance rating is Class 6.

## FINANCIAL INSTITUTIONS

Clinton has two banks and two savings and loan associations to serve the financial needs of the community. The banks have total assets of more than \$4.0 billion, while the savings and loans have assets of \$1.8 billion.

## HOTELS AND MOTELS

Clinton has three motels with numerous overnight accommodations.

## CHURCHES

Clinton has 23 Protestant churches. A Catholic church is located in Joanna, six miles away, and a Jewish house of worship is located in Greenville, 42 miles away.

## EDUCATION

Clinton, which is included in Laurens District 56, has three elementary schools; two middle schools; and one high school. The student/teacher ratio is 19.4 to 1, with 182 teachers and 3,524 students. Private kindergartens are available in the community and other schooling in nearby communities, especially Greenville.

Higher education facilities for the area are provided by Presbyterian College, located in the city; Piedmont Technical College and Lander College, located in Greenwood, 27 miles away; and Newberry College, located in Newberry, 21 miles away. Piedmont TEC also has a branch in Laurens, eight miles away.

## MEDICAL SERVICES

Medical services for the community are provided by the 96-bed Bailey Memorial Hospital and the 43-bed Bailey Nursing Home. The 64-bed Laurens District Hospital is located in Laurens, eight miles away. The community has 10 privately-practicing medical doctors and seven privately-practicing dentists.

## RECREATION AND CIVIC FACILITIES

Recreation facilities in the community consist of city parks with outdoor cooking and picnic facilities, two public swimming pools, five ball parks, four playgrounds, a theater,

YMCA, tennis courts and two golf courses. Nearby Lake Greenwood, Greenwood State Park and Lake Murray provide areas for fishing, boating, camping, swimming, and picnicking. The Sumter National Forest has public hunting areas. Concerts and other activities are staged at Belk Auditorium on the Presbyterian College campus.

## POWER

The city of Clinton owns and operates an electric utility system serving customers inside and outside the city limits.

Electric power is also available to surrounding areas from Duke Power Company. Duke Power, the nation's eighth-largest investor-owned operating electric utility, and the city of Clinton provide installation of service to industrial customers at no cost to the customer in most cases.

The city of Clinton and Duke Power Company representatives are available to assist industrial prospects at no cost or obligation in analyzing their electricity needs.

## FUELS

Natural gas is supplied by the Clinton-Newberry Natural Gas Company.

## WATER

The city obtains the municipal water supply from the Enoree River and Duncan Creek. The system is capable of supplying water at a maximum rate of 6,000,000 gallons per day, with an average daily demand of 2,200,000 gallons. Treated water storage consists of 1,250,000 gallons in elevated storage and 750,000 gallons in ground storage.

Analysis of water supplied in the community:

Total solids	80 mg/L
Alkalinity	33 mg/L
Calcium	3.8 mg/L
Hardness	16 mg/L
Iron	.32 mg/L
pH	7.6

## SEWER

Laurens County Water Resources Commission utilizes a trickling filter wastewater treatment system to dispose of the community's wastewater. The system has a design capacity for 2.75 million gallons of wastewater per day, and handles an average of 1.2 million gallons per day.

## LABOR

Because labor information may change in this area, a current labor availability report prepared and kept up to date by the S. C. State Development Board will be furnished to prospective manufacturers at their request. The comprehensive report will include sources of recruitable labor, labor force characteristics, work force skill levels, earnings data and other pertinent information. The S. C. State Board for Technical and Comprehensive Education has the resources to recruit and train workers in accordance

with a company's entry criteria. This training is at little or no cost to the employer. A lead-time schedule is developed to coordinate recruiting, testing, selecting, and training. This assures that persons will be able to move from training to their respective jobs at the time the plant is ready for initial production.

### TRANSPORTATION

Clinton is served by one interstate highway, I-26, one United States highway, and two South Carolina highways. The community is served by Columbia, Newberry and Laurens Railroad and Seaboard System Railroad. Clinton is served by 38 authorized motor carriers. Nearby terminals are located in Greenville, Greenwood and Laurens.

#### Freight Delivery Times:

To:	By Rail:	By Truck:
Atlanta	2 days	1 day
Baltimore	3 days	3 days
Chicago	4 days	3 days
Houston	6 days	3 days
New York	4 days	4 days
St. Louis	4 days	4 days
San Francisco	6 days	5 days

The Greenville-Spartanburg Airport, 40 miles from the community, offers regularly scheduled commercial airline service on American, Eastern, Delta, Bankair, Sunbird, U.S. Air, and Piedmont. Private aircraft utilize the Laurens County Airport, four miles away, which has a paved and lighted 3,200-foot runway. Private aircraft also utilize the Greenville-Spartanburg Airport, which has a paved and lighted 7,600-foot runway. Services available include RBn, major airframe and major powerplant repairs, 100LL and Jet A fuel, Unicom and Vortac.

### MAJOR EMPLOYERS

Name	Product or Service	Employees
Anderson Hosiery	Hosiery, socks	420
Ascoe Felts, Inc.	Papermakers' wet felts	170
Clinton Mills, Inc.	Cotton and blended fabric	1,553
E. L. Mansure Div.	Fringes, decorative tapes	140
Torrington Co. — Clinton Bearings Plant	Roller bearings	1,233

### FOREIGN TRADE ZONE

A Foreign Trade Zone is located in Summerville, South Carolina, 25 miles from the Port of Charleston and 143 miles from the community. The Foreign Trade Zone allows manufacturers to store, manufacture or process goods without paying U.S. Customs duties or worrying about quota compliance. This Foreign Trade Zone is served by a multimode transportation network which provides excellent accessibility to market areas.

### TAXES

The assessment on industrial property in South Carolina is 10.5% of the market value. New industry is granted a five-year moratorium on general county taxes (with the exception of school taxes). The city tax rate is \$8.40 per \$100 of assessed value. The county rate is \$14.00 per \$100 of assessed value. The effective city tax rate (tax liability per \$100 of market value) is \$.88. The effective county rate is \$1.47. The state has no tax on a manufacturer's inventories, goods-in-process, raw materials or finished goods. Treatment facilities or equipment of manufacturing plants which control water or air pollution are exempt from all property taxation.

### INDUSTRIAL SITES

Industrial sites are available in Clinton with a wide range of geographic and topographic features. In all probability, a site that will meet the needs of most industries' requirements has been identified, catalogued, and entered into the State Development Board's Computerized Site Selection System. Detailed site information is available and will be furnished upon request.

For Additional Information Contact:

SOUTH CAROLINA STATE DEVELOPMENT BOARD  
 P. O. Box 927, Columbia, South Carolina 29202  
 (803) 758-3145