

South Carolina Department of Probation, Parole & Pardon Services



Annual Statistical Report

Fiscal Year 2008



TABLE OF CONTENTS

SECTION A---TOTAL POPULATION

TABLE 1-A	Total Admissions by Status	3
TABLE 2-A	Total Admissions by Type of Offense	4
TABLE 3-A	Total Admissions by Gender & Race	5
FIGURE 1	Total Admissions by Gender & Race	6
TABLE 4-A	Active Offenders by Level of Supervision	7
FIGURE 2	Active Offenders by Level of Supervision	8
TABLE 5-A	Total Closures by Type	9
TABLE 6-A	Rate per Thousand High Risk Male Population	10
TABLE 7-A	Rate per Thousand High Risk Female Population	11
TABLE 8-A	Offender Drug Testing	12
TABLE 9-A	Total Admissions by Age	13

SECTION B---PROBATION

TABLE 1-B	Probation Admissions by Type of Offense	15
TABLE 2-B	Probation Admissions by Gender & Race	16
TABLE 3-B	Active Probation Offenders by Level of Supervision	17
FIGURE 3	Active Probation Offenders by Level of Supervision	18
TABLE 4-B	Probation Closures by Type	19
TABLE 5-B	Probation Admissions by Age	20

SECTION C---PAROLE

TABLE 1-C	Parole Admissions by Type of Offense	22
TABLE 2-C	Parole Admissions by Gender & Race	23
TABLE 3-C	Active Parole Offenders by Level of Supervision	24
FIGURE 4	Active Parole Offenders by Level of Supervision	25
TABLE 4-C	Parole Closures by Type	26
TABLE 5-C	Parole Admissions by Age	27

SECTION D---YOA

TABLE 1-D	YOA Admissions by Type of Offense	29
TABLE 2-D	YOA Admissions by Gender & Race	30
TABLE 3-D	Active YOA Offenders by Level of Supervision	31
FIGURE 5	Active YOA Offenders by Level of Supervision	32
TABLE 4-D	YOA Closures by Type	33
TABLE 5-D	YOA Admissions by Age	34

SECTION E---VIOLATIONS

TABLE 1-E	Violations by County	36
TABLE 2-E	Closings by Type	37

SUMMARY

CHART 1	Population Characteristics	39
CHART 2	Admissions to SCDPPPS	40
CHART 3	Violent Admission by Program	41



Message from the Director

The Fiscal Year 2007-08 Annual Statistical Report is attached for your review and reference. This report provides a basic statistical representation of the work of more than 750+ employees of this Department including 440+ Agents. While there have been many challenges over the course of the year, I am pleased to report that 66% of our probationers and 85% of our parolees successfully completed supervision. The Bureau of Justice Statistics of the U.S. Department of Justice (2006) reported nationally that approximately 58% of probationers and 45% of parolees successfully met the conditions of their supervision.

The South Carolina Department of Probation, Parole and Pardon Services operates its offender programs within a clear framework of public safety in supervising the 47,791 offenders who were under the legal jurisdiction of the Department in FY 08. The Department promotes public safety and offender compliance through ensuring that our interventions promote the offender's ability to make positive changes in his or her life. In addition, our interventions are responses focused to address present or potential problems that may interfere with the successful completion of supervision.

The following tables provide a description of the offender population and answer some of the more commonly asked questions regarding the Department's programmatic efforts. Each table is preceded by a short description of its contents.

For the reader who wishes additional information or clarification, please do not hesitate to contact Tony Dukes, Research Director of the Office of Executive Programs at 803-734-3503.

Sincerely,

A handwritten signature in black ink that reads "Samuel B. Glover". The signature is written in a cursive style.

Samuel B. Glover
Director



To the Reader

The reader should be aware that there are different ways of reporting units of data depending upon the purpose. Admissions include only those offenders admitted to SCDPPPS who had no other active cases at the time of admission. Closures information reflects only the last order to close during the fiscal year. Actives represents only those offenders who were active on June 30, 2008.

At the end of FY 2007-08, there were 47,791 offenders who were under the legal jurisdiction of the Department. Legal jurisdiction includes offenders who have been transferred out of state, absconded with active warrants, and others who are not under the active day-to-day supervision of the Department. At the end of the fiscal year 32,194 offenders were under active supervision of the Department.

In addition, due to rounding, some of the totals will not equal 100%. Where possible, missing data or rounding has been indicated.

Section A
Total Population



Total Population

Tables 1-A through 9-A and Figures 1-2, represent admissions to the SC Department of Probation, Parole and Pardon Services (SCDPPPS) over FY 07-08. These tables count admissions to a particular sanction, and include only those offenders admitted to SCDPPPS who had no other active cases at the time of admission. These tables also include only the main case even though an offender may have been admitted with more than one case. In FY 07-08, there were a total of 19,049 admissions. A state and county total is provided for each category of admission. Within the racial categories, due to the small number of offenders classified as "Asian, Hispanic, Native American, or Other", they have been grouped together and classified as "Other".

Table 1-A provides information on total admissions by program status¹. The counties of Charleston, Greenville, Richland and Spartanburg contributed the largest number of total admissions, together accounting for 32% of all admissions.

Table 2-A presents information on total admissions by type of offense, violent versus non-violent. Violent refers to those offenses as defined by the Omnibus Crime Act². Total admissions during FY 07-08 were predominately non-violent with very few admissions (6%) for violent offenses.

Table 3-A and Figure 1 illustrates total admissions by gender and race. Admissions overall continue to be predominately male, 81%, with a racial composition of 54% black, 44% white, and 2% other.

Table 4-A and Figure 2 describe all active offenders by level of supervision on June 30, 2008. This total does not include new and unclassified offenders, or indirect supervision offenders, such as those incarcerated on split sentences. The level of supervision

1

Probation status includes Probation, Probation Termination Upon Payment, Suspended During Probation, Split Probation, Monitor for the Court, and NGRI and Parole cases. Parole status includes Parole, Department of Juvenile Justice, Supervised Furlough IIA and early release program, and Community Supervision Program cases. YOA include Youth Offender Act Cases.

2

Murder, Armed Robbery, Attempted Armed Robbery, Kidnaping, Carjacking, Criminal Sexual Conduct 1st and 2nd degree, Criminal Sexual Conduct with a Minor, Assault with Intent to Commit Criminal Sexual Conduct 1st or 2nd degree, Engaging a Child for Sexual Performance, Assault and Battery with Intent to Kill, Voluntary Manslaughter, Drug Trafficking (44-53-370 e), Arson 1st and 2nd degree, Burglary 1st degree, Burglary 2nd degree with Aggravating Circumstances, or Accessory Before the Fact to any of the above crimes.

determines how often the offender is seen by the Agent. Among all offenders, high level supervision represented 22%, standard supervision represented 71%, sex offender supervision represented 3%, followed by intensive supervision at 4%.

Table 5-A shows total closures by type (successful or unsuccessful). Closures include only those offenders in which all cases have completely closed out from SCDPPPS. Only the last order to close during FY 07-08 and within that order only the main case, even though an offender may have had more than one case, is included. The overall success rate for all offenders closing during FY 07-08 was 66%. The unsuccessful rate, 34%, is defined as those offenders whose supervision was revoked due to a technical violation or new offense and those instances when the offender was sentenced to prison on a new offense.

Table 6-A presents the relationship between the number of high risk males (ages 17-34) in a county and the number of those males admitted to community supervision. This table illustrates that statewide, for every one thousand males age 17 to 34, 19.2 were admitted to the supervision of the SCDPPPS. County rates range from a low of 10.3 to a high of 34.3. This number is limited to new admissions for the fiscal year and does not reflect the percentage of active offenders in this age category.

Table 7-A demonstrates the relationship between the number of high risk females (ages 17-34) in a county and the number of those females admitted to community supervision. This table illustrates that statewide, for every one thousand females age 17 to 34, 4.0 were admitted to the supervision of the SCDPPPS. County rates range from a low of 0.4 to a high of 11.9. This number is limited to new admissions for the fiscal year and does not reflect the percentage of active offenders in this age category.

Table 8-A shows drug testing activity during FY 07-08. This table represents the number of individual offenders tested, the number of individuals testing positive, the number of offenders were tested, and the total number of positive tests.

Table 9-A describes offender admissions by age category.

**S.C. DEPARTMENT OF
PROBATION, PAROLE AND PARDON SERVICES
TOTAL ADMISSIONS BY STATUS
TABLE 1-A**

COUNTY	PROB. ADM.	PERCENT PROB.	PAROLE ADM.	PERCENT PAROLE	YOA ADM.	PERCENT YOA	TOTAL ADM.
ABBEVILLE	119	90%	7	5%	6	5%	132
AIKEN	509	86%	57	10%	27	5%	593
ALLENDALE	24	63%	2	5%	12	32%	38
ANDERSON	596	84%	80	11%	35	5%	711
BAMBERG	34	77%	5	11%	5	11%	44
BARNWELL	69	79%	9	10%	9	10%	87
BEAUFORT	294	83%	30	8%	31	9%	355
BERKELEY	578	85%	39	6%	66	10%	683
CALHOUN	44	75%	4	7%	11	19%	59
CHARLESTON	1,439	84%	96	6%	177	10%	1,712
CHEROKEE	247	86%	20	7%	20	7%	287
CHESTER	171	91%	9	5%	7	4%	187
CHESTERFIELD	132	84%	7	4%	19	12%	158
CLARENDON	107	75%	18	13%	18	13%	143
COLLETON	140	80%	10	6%	24	14%	174
DARLINGTON	283	84%	24	7%	31	9%	338
DILLON	167	88%	9	5%	14	7%	190
DORCHESTER	325	79%	31	8%	56	14%	412
EDGEFIELD	111	91%	7	6%	4	3%	122
FAIRFIELD	128	90%	6	4%	9	6%	143
FLORENCE	742	88%	38	5%	60	7%	840
GEORGETOWN	270	84%	33	10%	17	5%	320
GREENVILLE	1,557	88%	134	8%	87	5%	1,778
GREENWOOD	321	88%	22	6%	20	6%	363
HAMPTON	53	83%	5	8%	6	9%	64
HORRY	752	84%	89	10%	49	6%	890
JASPER	62	73%	11	13%	12	14%	85
KERSHAW	112	84%	9	7%	13	10%	134
LANCASTER	294	92%	18	6%	9	3%	321
LAURENS	360	87%	29	7%	27	6%	416
LEE	86	84%	5	5%	11	11%	102
LEXINGTON	809	87%	72	8%	48	5%	929
MCCORMICK	43	83%	6	12%	3	6%	52
MARION	147	76%	26	13%	21	11%	194
MARLBORO	98	73%	19	14%	18	13%	135
NEWBERRY	195	91%	10	5%	10	5%	215
OCONEE	250	87%	23	8%	16	6%	289
ORANGEBURG	385	84%	35	8%	37	8%	457
PICKENS	325	88%	23	6%	20	5%	368
RICHLAND	1,143	81%	173	12%	93	7%	1,409
SALUDA	78	81%	6	6%	12	13%	96
SPARTANBURG	969	84%	110	10%	75	6%	1,154
SUMTER	398	79%	39	8%	65	13%	502
UNION	143	82%	17	10%	15	9%	175
WILLIAMSBURG	155	85%	10	5%	18	10%	183
YORK	777	85%	88	10%	48	5%	913
TRANSITIONAL ADM.	15	15%	44	45%	38	39%	97
STATE TOTAL	16,056	84%	1,564	8%	1,429	8%	19,049

**S.C. DEPARTMENT OF
PROBATION, PAROLE AND PARDON SERVICES
TOTAL ADMISSIONS BY TYPE OF OFFENSE
TABLE 2-A**

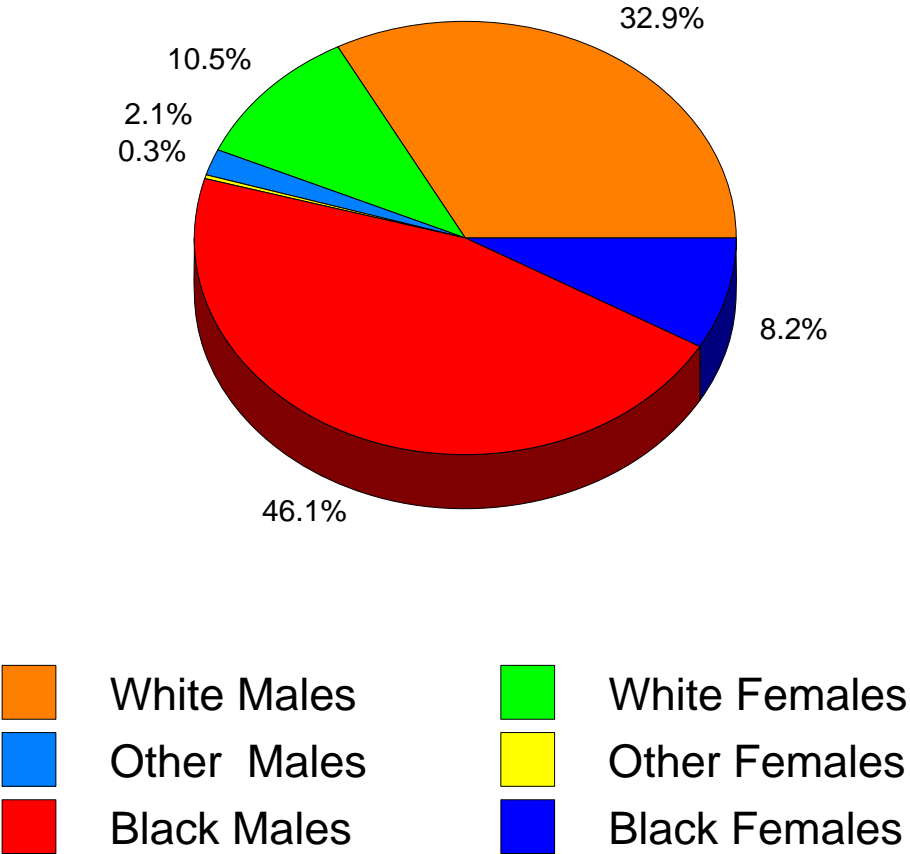
COUNTY	OMNIBUS VIOLENT	PERCENT VIOLENT	NONVIOLENT	PERCENT NONVIOLENT	TOTAL ADM.
ABBEVILLE	4	3%	128	97%	132
AIKEN	32	5%	561	95%	593
ALLENDALE	2	5%	36	95%	38
ANDERSON	68	10%	643	90%	711
BAMBERG	2	5%	42	95%	44
BARNWELL	4	5%	83	95%	87
BEAUFORT	14	4%	341	96%	355
BERKELEY	27	4%	656	96%	683
CALHOUN	3	5%	56	95%	59
CHARLESTON	65	4%	1647	96%	1,712
CHEROKEE	15	5%	272	95%	287
CHESTER	5	3%	182	97%	187
CHESTERFIELD	8	5%	150	95%	158
CLARENDON	12	8%	131	92%	143
COLLETON	7	4%	167	96%	174
DARLINGTON	17	5%	321	95%	338
DILLON	9	5%	181	95%	190
DORCHESTER	23	6%	389	94%	412
EDGEFIELD	3	2%	119	98%	122
FAIRFIELD	5	3%	138	97%	143
FLORENCE	22	3%	818	97%	840
GEORGETOWN	9	3%	311	97%	320
GREENVILLE	86	5%	1692	95%	1,778
GREENWOOD	14	4%	349	96%	363
HAMPTON	6	9%	58	91%	64
HORRY	56	6%	834	94%	890
JASPER	5	6%	80	94%	85
KERSHAW	10	7%	124	93%	134
LANCASTER	19	6%	302	94%	321
LAURENS	21	5%	395	95%	416
LEE	4	4%	98	96%	102
LEXINGTON	38	4%	891	96%	929
MCCORMICK	5	10%	47	90%	52
MARION	11	6%	183	94%	194
MARLBORO	7	5%	128	95%	135
NEWBERRY	9	4%	206	96%	215
OCONEE	19	7%	270	93%	289
ORANGEBURG	25	5%	432	95%	457
PICKENS	21	6%	347	94%	368
RICHLAND	124	9%	1285	91%	1,409
SALUDA	1	1%	95	99%	96
SPARTANBURG	89	8%	1065	92%	1,154
SUMTER	34	7%	468	93%	502
UNION	8	5%	167	95%	175
WILLIAMSBURG	17	9%	166	91%	183
YORK	45	5%	868	95%	913
TRANSITIONAL ADM.	20	21%	77	79%	97
STATE TOTAL	1,050	6%	17,999	94%	19,049

**S.C. DEPARTMENT OF
PROBATION, PAROLE AND PARDON SERVICES
TOTAL ADMISSIONS BY GENDER AND RACE
TABLE 3-A
N=19,049**

COUNTY	PERCENT MALE	PERCENT FEMALE	PERCENT BLACK	PERCENT OTHER	PERCENT WHITE
ABBEVILLE	82%	18%	52%	1%	47%
AIKEN	81%	19%	48%	2%	49%
ALLENDALE	92%	8%	97%	0%	3%
ANDERSON	77%	23%	34%	1%	65%
BAMBERG	98%	2%	61%	0%	39%
BARNWELL	94%	6%	74%	0%	26%
BEAUFORT	80%	20%	59%	6%	35%
BERKELEY	83%	17%	46%	3%	51%
CALHOUN	93%	7%	76%	0%	24%
CHARLESTON	86%	14%	70%	2%	28%
CHEROKEE	82%	18%	35%	1%	64%
CHESTER	82%	18%	55%	1%	44%
CHESTERFIELD	73%	27%	57%	3%	41%
CLARENDON	82%	18%	69%	1%	30%
COLLETON	84%	16%	61%	1%	37%
DARLINGTON	77%	23%	58%	1%	41%
DILLON	78%	22%	67%	5%	28%
DORCHESTER	83%	17%	50%	3%	48%
EDGEFIELD	84%	16%	63%	0%	37%
FAIRFIELD	85%	15%	80%	1%	19%
FLORENCE	80%	20%	68%	1%	31%
GEORGETOWN	85%	15%	59%	1%	40%
GREENVILLE	78%	22%	44%	4%	52%
GREENWOOD	82%	18%	58%	4%	38%
HAMPTON	91%	9%	81%	3%	16%
HORRY	78%	22%	33%	4%	63%
JASPER	79%	21%	55%	5%	40%
KERSHAW	83%	17%	37%	1%	62%
LANCASTER	82%	18%	53%	5%	42%
LAURENS	82%	18%	48%	1%	50%
LEE	78%	22%	83%	0%	17%
LEXINGTON	78%	22%	40%	3%	57%
MCCORMICK	77%	23%	75%	2%	23%
MARION	87%	13%	77%	2%	22%
MARLBORO	87%	13%	64%	2%	34%
NEWBERRY	80%	20%	60%	3%	37%
OCONEE	75%	25%	25%	3%	72%
ORANGEBURG	82%	18%	78%	1%	21%
PICKENS	79%	21%	14%	1%	85%
RICHLAND	80%	20%	78%	2%	20%
SALUDA	89%	11%	59%	15%	26%
SPARTANBURG	78%	22%	45%	2%	53%
SUMTER	86%	14%	78%	1%	22%
UNION	81%	19%	43%	0%	57%
WILLIAMSBURG	86%	14%	82%	1%	17%
YORK	81%	19%	43%	2%	54%
TRANSITIONAL ADM.	91%	9%	46%	4%	49%
STATE TOTAL	81%	19%	54%	2%	43%

TOTAL ADMISSIONS BY RACE AND GENDER

FIGURE 1

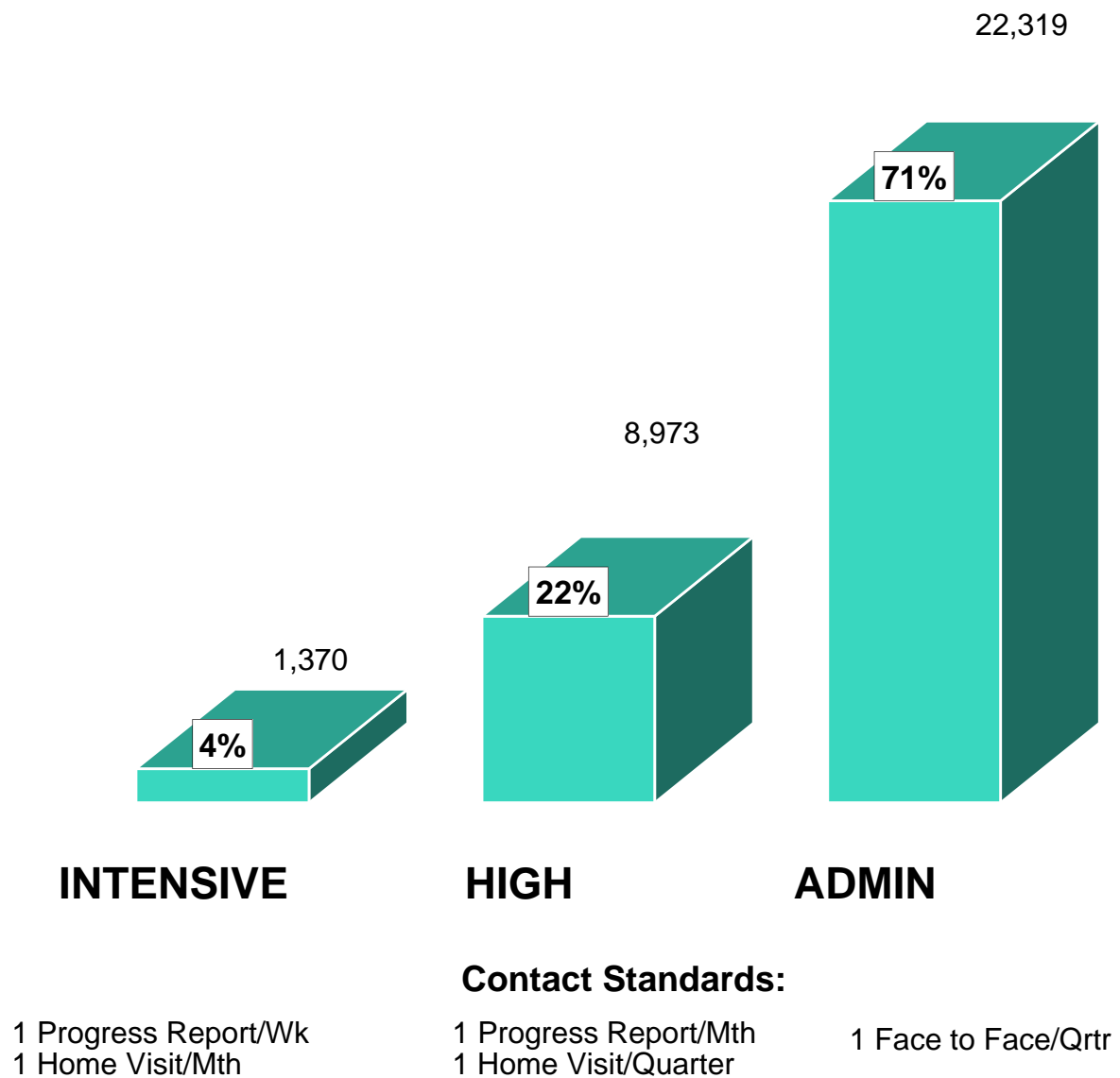


**S.C. DEPARTMENT OF
PROBATION, PAROLE AND PARDON SERVICES
ACTIVE OFFENDERS BY LEVEL OF
SUPERVISION, JUNE 30, 2008
TABLE 4-A**

COUNTY	STANDARD	HIGH	INTENSIVE	SEX OFFENDER	TOTAL
ABBEVILLE	72%	24%	1%	4%	212
AIKEN	78%	16%	2%	3%	1,248
ALLENDALE	55%	35%	5%	4%	74
ANDERSON	72%	21%	3%	4%	1,505
BAMBERG	87%	8%	3%	3%	118
BARNWELL	71%	19%	4%	6%	112
BEAUFORT	75%	20%	2%	2%	532
BERKELEY	72%	21%	3%	4%	1,092
CALHOUN	66%	25%	6%	2%	95
CHARLESTON	61%	32%	4%	2%	2,605
CHEROKEE	64%	28%	4%	3%	492
CHESTER	75%	21%	1%	3%	297
CHESTERFIELD	72%	21%	6%	1%	175
CLARENDON	80%	15%	3%	2%	228
COLLETON	68%	26%	4%	2%	335
DARLINGTON	76%	17%	4%	2%	424
DILLON	86%	9%	2%	2%	204
DORCHESTER	68%	25%	3%	4%	840
EDGEFIELD	77%	18%	2%	3%	220
FAIRFIELD	61%	37%	1%	1%	233
FLORENCE	74%	23%	2%	2%	1,141
GEORGETOWN	72%	22%	3%	3%	408
GREENVILLE	68%	26%	3%	3%	3,440
GREENWOOD	70%	25%	2%	3%	522
HAMPTON	75%	17%	5%	3%	116
HORRY	75%	19%	2%	3%	1,407
JASPER	71%	25%	1%	3%	167
KERSHAW	73%	19%	3%	5%	281
LANCASTER	64%	32%	3%	1%	561
LAURENS	72%	22%	4%	3%	714
LEE	31%	60%	4%	5%	160
LEXINGTON	75%	18%	4%	3%	1,488
MCCORMICK	72%	21%	4%	4%	81
MARION	76%	16%	7%	1%	247
MARLBORO	79%	10%	9%	2%	176
NEWBERRY	73%	22%	2%	3%	335
OCONEE	69%	24%	3%	4%	452
ORANGEBURG	82%	12%	4%	2%	789
PICKENS	69%	25%	2%	4%	746
RICHLAND	77%	16%	4%	3%	2,710
SALUDA	59%	30%	6%	5%	143
SPARTANBURG	70%	23%	5%	3%	1,913
SUMTER	78%	16%	4%	2%	841
UNION	79%	15%	3%	3%	357
WILLIAMSBURG	67%	25%	4%	4%	276
YORK	75%	18%	3%	4%	1,383
TRANSITIONAL ADM.	35%	1%	64%	0%	299
STATE TOTAL	71%	22%	4%	3%	
ACTIVE OFFENDERS	22,977	7,016	1,268	933	32,194

ACTIVE OFFENDERS BY LEVEL OF SUPERVISION

FIGURE 2



**S.C. DEPARTMENT OF
PROBATION, PAROLE AND PARDON SERVICES
TOTAL CLOSURES BY TYPE
TABLE 5-A**

COUNTY	SUCCESSFUL	SUCCESSFUL RATE	UNSUCCESSFUL	UNSUCCESSFUL RATE
ABBEVILLE	76	65%	41	35%
AIKEN	273	69%	123	31%
ALLENDALE	27	64%	15	36%
ANDERSON	430	63%	255	37%
BAMBERG	58	85%	10	15%
BARNWELL	61	69%	27	31%
BEAUFORT	192	63%	111	37%
BERKELEY	433	74%	153	26%
CALHOUN	36	78%	10	22%
CHARLESTON	930	63%	556	37%
CHEROKEE	138	57%	103	43%
CHESTER	76	67%	38	33%
CHESTERFIELD	86	50%	86	50%
CLARENDON	88	70%	38	30%
COLLETON	93	73%	34	27%
DARLINGTON	111	54%	96	46%
DILLON	87	58%	63	42%
DORCHESTER	267	69%	120	31%
EDGEFIELD	73	66%	37	34%
FAIRFIELD	86	78%	24	22%
FLORENCE	420	63%	242	37%
GEORGETOWN	164	68%	78	32%
GREENVILLE	1152	69%	512	31%
GREENWOOD	209	60%	139	40%
HAMPTON	32	55%	26	45%
HORRY	523	66%	267	34%
JASPER	48	60%	32	40%
KERSHAW	74	63%	43	37%
LANCASTER	164	69%	72	31%
LAURENS	246	77%	74	23%
LEE	42	63%	25	37%
LEXINGTON	549	72%	215	28%
MCCORMICK	20	87%	3	13%
MARION	111	63%	65	37%
MARLBORO	112	65%	59	35%
NEWBERRY	163	70%	71	30%
OCONEE	174	67%	84	33%
ORANGEBURG	255	74%	88	26%
PICKENS	247	72%	96	28%
RICHLAND	852	64%	475	36%
SALUDA	57	85%	10	15%
SPARTANBURG	614	48%	654	52%
SUMTER	298	65%	160	35%
UNION	129	65%	71	36%
WILLIAMSBURG	89	58%	64	42%
YORK	615	67%	309	33%
TRANSITIONAL ADM.	315	98%	7	2%
STATE TOTAL	11,295	66%	5,881	34%

**S.C. DEPARTMENT OF
PROBATION, PAROLE AND PARDON SERVICES
RATE PER 1,000 HIGH RISK
MALE (ADMISSIONS) POPULATION
TABLE 6-A**

COUNTY	MALE POPULATION AGE 17-34*	SCDPPPS MALES AGE 17-34	RATE PER 1,000 AGE 17-34 OFFENDERS	RANK ORDER RATE PER 1,000 OFFENDERS
ABBEVILLE	2,915	55	18.9	19
AIKEN	15,928	288	18.1	17
ALLENDALE	1,603	29	18.1	18
ANDERSON	18,993	309	16.3	11
BAMBERG	2,087	30	14.4	5
BARNWELL	2,602	56	21.5	23
BEAUFORT	18,413	200	10.9	2
BERKELEY	21,888	374	17.1	13
CALHOUN	1,488	37	24.9	37
CHARLESTON	43,941	1,007	22.9	28
CHEROKEE	6,483	149	23.0	29
CHESTER	3,832	102	26.6	38
CHESTERFIELD	5,029	83	16.5	12
CLARENDON	4,189	85	20.3	21
COLLETON	4,050	99	24.4	35
DARLINGTON	7,570	176	23.2	30
DILLON	3,488	106	30.4	44
DORCHESTER	11,113	235	21.1	22
EDGEFIELD	3,843	60	15.6	8
FAIRFIELD	2,565	88	34.3	46
FLORENCE	14,939	448	30.0	43
GEORGETOWN	5,644	183	32.4	45
GREENVILLE	49,263	792	16.1	9
GREENWOOD	8,089	201	24.8	36
HAMPTON	2,901	43	14.8	7
HORRY	24,916	443	17.8	16
JASPER	3,179	45	14.2	4
KERSHAW	5,560	75	13.5	3
LANCASTER	7,921	172	21.7	24
LAURENS	8,449	226	26.7	39
LEE	2,758	61	22.1	25
LEXINGTON	25,618	441	17.2	14
MCCORMICK	1,404	27	19.2	20
MARION	4,035	114	28.3	42
MARLBORO	3,769	86	22.8	27
NEWBERRY	4,378	107	24.4	34
OCONEE	7,401	128	17.3	15
ORANGEBURG	10,724	254	23.7	31
PICKENS	18,560	192	10.3	1
RICHLAND	49,109	716	14.6	6
SALUDA	2,385	58	24.3	32
SPARTANBURG	31,437	510	16.2	10
SUMTER	13,540	306	22.6	26
UNION	3,254	88	27.0	41
WILLIAMSBURG	3,986	107	26.8	40
YORK	19,844	483	24.3	33
STATE TOTAL	515,083	9,874	19.2	

*DATA FURNISHED BY S.C. STATE DATA CENTER

**S.C. DEPARTMENT OF
PROBATION, PAROLE AND PARDON SERVICES
RATE PER 1,000 HIGH RISK
FEMALE (ADMISSIONS) POPULATION
TABLE 7-A**

COUNTY	FEMALE POPULATION AGE 17-34*	SCDPPPS FEMALES AGE 17-34	RATE PER 1,000 AGE 17-34 OFFENDERS	RANK ORDER RATE PER 1,000 OFFENDERS
ABBEVILLE	3,176	13	4.1	22
AIKEN	17,023	61	3.6	17
ALLENDALE	1,184	3	2.5	7
ANDERSON	19,519	86	4.4	27
BAMBERG	2,270	1	0.4	1
BARNWELL	2,747	2	0.7	2
BEAUFORT	13,976	42	3.0	10
BERKELEY	18,012	58	3.2	11
CALHOUN	1,666	2	1.2	3
CHARLESTON	43,604	130	3.0	9
CHEROKEE	6,665	22	3.3	13
CHESTER	4,079	22	5.4	41
CHESTERFIELD	5,096	23	4.5	33
CLARENDON	3,393	15	4.4	28
COLLETON	4,309	18	4.2	23
DARLINGTON	8,302	37	4.5	29
DILLON	3,802	29	7.6	45
DORCHESTER	11,378	39	3.4	15
EDGEFIELD	2,582	11	4.3	24
FAIRFIELD	2,749	9	3.3	12
FLORENCE	16,331	102	6.2	43
GEORGETOWN	5,966	30	5.0	36
GREENVILLE	49,074	213	4.3	25
GREENWOOD	8,937	46	5.1	39
HAMPTON	2,305	3	1.3	4
HORRY	23,882	107	4.5	31
JASPER	2,337	12	5.1	38
KERSHAW	5,815	9	1.5	5
LANCASTER	7,138	36	5.0	37
LAURENS	8,401	42	5.0	35
LEE	2,245	12	5.3	40
LEXINGTON	26,429	107	4.0	21
MCCORMICK	840	10	11.9	46
MARION	4,490	15	3.3	14
MARLBORO	3,375	13	3.9	20
NEWBERRY	4,353	31	7.1	44
OCONEE	7,204	39	5.4	42
ORANGEBURG	12,373	47	3.8	19
PICKENS	16,862	38	2.3	6
RICHLAND	49,742	171	3.4	16
SALUDA	2,174	8	3.7	18
SPARTANBURG	31,676	142	4.5	32
SUMTER	13,402	35	2.6	8
UNION	3,424	17	5.0	34
WILLIAMSBURG	4,368	19	4.3	26
YORK	21,679	97	4.5	30
STATE TOTAL	510,354	2,024	4.0	

*DATA FURNISHED BY S.C. STATE DATA CENTER

**S.C. DEPARTMENT OF
PROBATION, PAROLE AND PARDON SERVICES
OFFENDER DRUG TESTING
TABLE 8-A**

COUNTY	INDIVIDUAL OFFENDERS TESTED	INDIVIDUALS TESTING POSITIVE	PERCENTAGE OF INDIVIDUAL OFFENDERS TESTING POSITIVE	TOTAL NO. POSITIVE TESTS	NUMBER OF TIMES OFFENDERS WERE TESTED
ABBEVILLE	52	7	13.46%	8	58
AIKEN	622	183	29.42%	323	909
ALLENDALE	54	25	46.30%	37	80
ANDERSON	1548	518	33.46%	891	2747
BAMBERG	54	7	12.96%	10	56
BARNWELL	58	20	34.48%	28	76
BEAUFORT*	223	72	32.29%	96	308
BERKELEY*	547	218	39.85%	400	776
CALHOUN	79	40	50.63%	90	173
CHARLESTON	912	479	52.52%	802	1312
CHEROKEE	178	79	44.38%	136	252
CHESTER	95	39	41.05%	50	122
CHESTERFIELD	163	72	44.17%	121	378
CLARENDON	77	24	31.17%	31	93
COLLETON	101	42	41.58%	74	152
DARLINGTON	328	110	33.54%	145	477
DILLON	50	17	34.00%	20	52
DORCHESTER*	367	174	47.41%	280	611
EDGEFIELD	275	96	34.91%	144	375
FAIRFIELD	216	78	36.11%	99	263
FLORENCE*	489	189	38.65%	301	642
GEORGETOWN	161	36	22.36%	56	224
GREENVILLE*	1747	762	43.62%	1427	3114
GREENWOOD	194	95	48.97%	150	285
HAMPTON	46	23	50.00%	30	49
HORRY	500	177	35.40%	263	676
JASPER	40	3	7.50%	4	51
KERSHAW	190	91	47.89%	162	374
LANCASTER	272	129	47.43%	252	454
LAURENS	217	77	35.48%	150	315
LEE	9	3	33.33%	5	11
LEXINGTON	677	249	36.78%	471	1032
MCCORMICK	9	3	33.33%	5	10
MARION	65	36	55.38%	63	143
MARLBORO	128	66	51.56%	97	174
NEWBERRY	86	38	44.19%	62	115
OCONEE	124	75	60.48%	143	172
ORANGEBURG	419	155	36.99%	210	518
PICKENS	247	136	55.06%	239	320
RICHLAND	1181	480	40.64%	823	2031
SALUDA	159	30	18.87%	43	251
SPARTANBURG	1245	487	39.12%	844	1918
SUMTER	190	111	58.42%	178	280
UNION	83	33	39.76%	53	101
WILLIAMSBURG	168	98	58.33%	152	238
YORK*	842	333	39.55%	476	1151
SPARTANBURG REST. CTR.	0	0	0.00%	0	0
CHARLESTON REST. CTR	137	44	32.12%	58	152
COLUMBIA REST. CTR	263	112	42.59%	234	1136
STATE TOTAL	15,887	6,371	40.10%	10,736	25,207

* Includes Satellite Office

**S.C. DEPARTMENT OF
PROBATION, PAROLE AND PARDON SERVICES
TOTAL ADMISSIONS BY AGE**

TABLE 9-A

N = 19,049

COUNTY	Age 24 & Under	Percent 24 & Under	Age 25 & Over	Percent 25 & Over
ABBEVILLE	31	23%	101	77%
AIKEN	163	27%	430	73%
ALLENDALE	23	61%	15	39%
ANDERSON	166	23%	545	77%
BAMBERG	21	48%	23	52%
BARNWELL	27	31%	60	69%
BEAUFORT	141	40%	214	60%
BERKELEY	225	33%	458	67%
CALHOUN	25	42%	34	58%
CHARLESTON	637	37%	1075	63%
CHEROKEE	74	26%	213	74%
CHESTER	61	33%	126	67%
CHESTERFIELD	49	31%	109	69%
CLARENDON	60	42%	83	58%
COLLETON	58	33%	116	67%
DARLINGTON	102	30%	236	70%
DILLON	72	38%	118	62%
DORCHESTER	174	42%	238	58%
EDGEFIELD	25	20%	97	80%
FAIRFIELD	48	34%	95	66%
FLORENCE	279	33%	561	67%
GEORGETOWN	106	33%	214	67%
GREENVILLE	457	26%	1321	74%
GREENWOOD	109	30%	254	70%
HAMPTON	31	48%	33	52%
HORRY	262	29%	628	71%
JASPER	35	41%	50	59%
KERSHAW	46	34%	88	66%
LANCASTER	98	31%	223	69%
LAURENS	144	35%	272	65%
LEE	36	35%	66	65%
LEXINGTON	258	28%	671	72%
MCCORMICK	18	35%	34	65%
MARION	76	39%	118	61%
MARLBORO	46	34%	89	66%
NEWBERRY	73	34%	142	66%
OCONEE	82	28%	207	72%
ORANGEBURG	152	33%	305	67%
PICKENS	93	25%	275	75%
RICHLAND	454	32%	955	68%
SALUDA	28	29%	68	71%
SPARTANBURG	308	27%	846	73%
SUMTER	189	38%	313	62%
UNION	54	31%	121	69%
WILLIAMSBURG	66	36%	117	64%
YORK	328	36%	585	64%
TRANSITIONAL ADM.	42	43%	55	57%
STATE TOTAL	6,052	32%	12,997	68%

Section B
Probation



Probation

The Department is charged with the responsibility of supervising those offenders placed on probation by the Court. Probation is a court-ordered community sanction which suspends the imposition of all or part of the original sentence of incarceration. It requires the offender, under SCDPPPS supervision in the community, to adhere to a set of conditions which limit the offender's freedom, reparation to victims if so ordered, and to provide for judicial revocation for violation of those conditions.

Tables 1-B and 2-B represent all probation admissions during FY 07-08. Probation includes regular probation, intensive probation, offenders admitted to probation supervision from a split sentence from prison.

Table 1-B breaks down probation admissions in terms of offense type, violent versus non-violent. For FY 07-08 statewide 3% of all probation admissions were for violent offenses.

Table 2-B provides information on probation admissions by gender and race. Probation admissions were predominately male, 79%, with a racial composition of 52% black, 2% other, and 45% white.

Table 3-B and Figure 3 describe the active probation offender population in terms of level of supervision on June 30, 2008. This table does not include new and unclassified offenders or indirect supervision offenders, such as those incarcerated on split sentences. Among probationers, high level supervision represented 23%, standard supervision represented 73%, sex offender supervision 2%, followed by intensive supervision at 2%.

Table 4-B provides data for probation closures by type (successful or unsuccessful). The overall success rate for probationers (66%) was the same as the success rate for the total offender population (66%).

Table 5-B reflects probation admissions by age category.

**S.C DEPARTMENT OF
PROBATION, PAROLE AND PARDON SERVICES
PROBATION ADMISSIONS BY TYPE OF OFFENSE
TABLE 1-B**

COUNTY	OMNIBUS VIOLENT	PERCENT VIOLENT	NONVIOLENT	PERCENT NONVIOLENT	TOTAL
ABBEVILLE	2	2%	117	98%	119
AIKEN	11	2%	497	98%	508
ALLENDALE	2	8%	22	92%	24
ANDERSON	29	5%	563	95%	592
BAMBERG	1	3%	33	97%	34
BARNWELL	2	3%	67	97%	69
BEAUFORT	6	2%	288	98%	294
BERKELEY	11	2%	567	98%	578
CALHOUN	1	2%	43	98%	44
CHARLESTON	21	1%	1417	99%	1,438
CHEROKEE	10	4%	236	96%	246
CHESTER	3	2%	168	98%	171
CHESTERFIELD	7	5%	125	95%	132
CLARENDON	5	5%	102	95%	107
COLLETON	3	2%	137	98%	140
DARLINGTON	6	2%	277	98%	283
DILLON	5	3%	162	97%	167
DORCHESTER	13	4%	309	96%	322
EDGEFIELD	0	0%	111	100%	111
FAIRFIELD	1	1%	127	99%	128
FLORENCE	9	1%	732	99%	741
GEORGETOWN	4	1%	266	99%	270
GREENVILLE	37	2%	1515	98%	1,552
GREENWOOD	3	1%	317	99%	320
HAMPTON	3	6%	50	94%	53
HORRY	17	2%	735	98%	752
JASPER	1	2%	61	98%	62
KERSHAW	4	4%	108	96%	112
LANCASTER	12	4%	282	96%	294
LAURENS	6	2%	354	98%	360
LEE	1	1%	85	99%	86
LEXINGTON	20	2%	789	98%	809
MCCORMICK	0	0%	43	100%	43
MARION	2	1%	143	99%	145
MARLBORO	3	3%	95	97%	98
NEWBERRY	6	3%	189	97%	195
OCONEE	9	4%	240	96%	249
ORANGEBURG	12	3%	372	97%	384
PICKENS	12	4%	313	96%	325
RICHLAND	56	5%	1086	95%	1,142
SALUDA	0	0%	78	100%	78
SPARTANBURG	38	4%	928	96%	966
SUMTER	19	5%	378	95%	397
UNION	3	2%	140	98%	143
WILLIAMSBURG	13	8%	142	92%	155
YORK	17	2%	759	98%	776
TRANSITIONAL ADM.	0	0%	1	100%	1
	1		13		
STATE TOTAL	447	3%	15,582	97%	16,029

**S.C. DEPARTMENT OF
PROBATION, PAROLE AND PARDON SERVICES
PROBATION ADMISSIONS BY GENDER AND RACE**

**TABLE 2-B
N= 16,029**

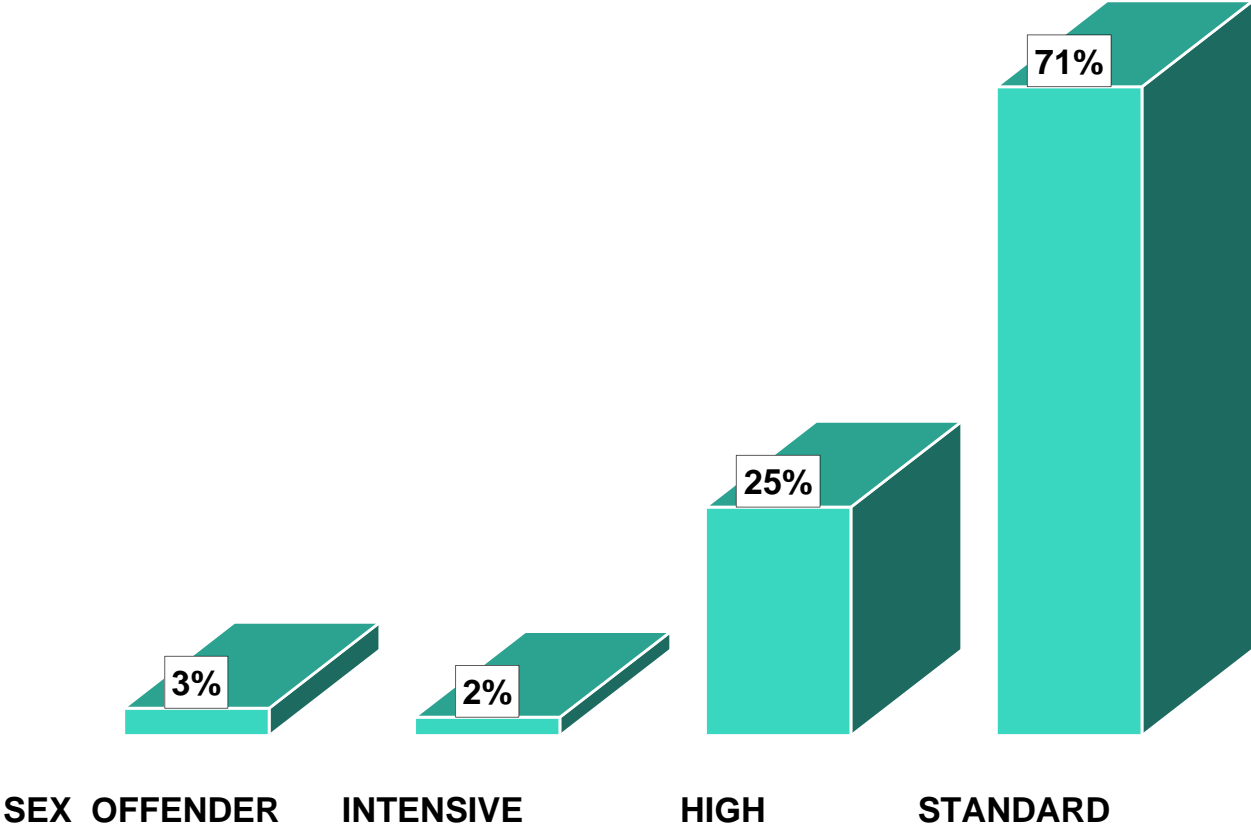
COUNTY	PERCENT MALE	PERCENT FEMALE	PERCENT BLACK	PERCENT OTHER	PERCENT WHITE
ABBEVILLE	81%	19%	50%	0%	50%
AIKEN	79%	21%	47%	3%	51%
ALLENDALE	88%	13%	96%	0%	4%
ANDERSON	75%	25%	33%	2%	66%
BAMBERG	97%	3%	59%	0%	41%
BARNWELL	93%	7%	71%	0%	29%
BEAUFORT	77%	23%	58%	6%	36%
BERKELEY	80%	20%	44%	3%	53%
CALHOUN	93%	7%	75%	0%	25%
CHARLESTON	84%	16%	67%	2%	31%
CHEROKEE	80%	20%	30%	1%	69%
CHESTER	81%	19%	56%	1%	44%
CHESTERFIELD	69%	31%	55%	2%	42%
CLARENDON	77%	23%	69%	1%	30%
COLLETON	81%	19%	61%	1%	38%
DARLINGTON	74%	26%	57%	1%	42%
DILLON	75%	25%	63%	5%	32%
DORCHESTER	80%	20%	47%	3%	50%
EDGEFIELD	83%	17%	63%	0%	37%
FAIRFIELD	84%	16%	79%	2%	20%
FLORENCE	78%	22%	67%	1%	33%
GEORGETOWN	83%	17%	55%	1%	44%
GREENVILLE	75%	25%	41%	5%	54%
GREENWOOD	80%	20%	55%	4%	41%
HAMPTON	91%	9%	81%	4%	15%
HORRY	76%	24%	30%	4%	67%
JASPER	71%	29%	53%	5%	42%
KERSHAW	80%	20%	35%	2%	63%
LANCASTER	81%	19%	51%	5%	44%
LAURENS	80%	20%	46%	2%	53%
LEE	76%	24%	81%	0%	19%
LEXINGTON	76%	24%	40%	3%	58%
MCCORMICK	72%	28%	72%	2%	26%
MARION	85%	15%	74%	2%	23%
MARLBORO	83%	17%	60%	3%	37%
NEWBERRY	78%	22%	58%	3%	38%
OCONEE	74%	26%	26%	3%	71%
ORANGEBURG	80%	20%	77%	1%	22%
PICKENS	77%	23%	12%	1%	86%
RICHLAND	79%	21%	76%	3%	22%
SALUDA	86%	14%	54%	17%	29%
SPARTANBURG	75%	25%	44%	2%	54%
SUMTER	83%	17%	77%	1%	22%
UNION	78%	22%	42%	0%	58%
WILLIAMSBURG	83%	17%	81%	1%	18%
YORK	79%	21%	41%	2%	57%
TRANSITIONAL ADM.	87%	13%	53%	0%	47%
STATE TOTAL	79%	21%	52%	2%	45%

**S.C. DEPARTMENT OF
PROBATION, PAROLE AND PARDON SERVICES
ACTIVE PROBATION OFFENDERS BY LEVEL
OF SUPERVISION, JUNE 30, 2008
TABLE 3-B**

COUNTY	ADMIN	HIGH	INTENSIVE	SEX OFFENDER	TOTAL
ABBEVILLE	71%	26%	1%	3%	188
AIKEN	79%	17%	1%	3%	1,046
ALLENDALE	59%	37%	0%	4%	51
ANDERSON	73%	22%	2%	3%	1,293
BAMBERG	89%	7%	2%	2%	101
BARNWELL	75%	20%	1%	4%	80
BEAUFORT	77%	20%	0%	3%	438
BERKELEY	74%	23%	0%	4%	911
CALHOUN	73%	25%	1%	0%	75
CHARLESTON	63%	34%	2%	1%	2,118
CHEROKEE	65%	31%	2%	2%	411
CHESTER	76%	21%	0%	2%	259
CHESTERFIELD	74%	21%	2%	2%	140
CLARENDON	81%	17%	1%	1%	184
COLLETON	74%	25%	1%	0%	270
DARLINGTON	80%	19%	1%	1%	350
DILLON	87%	12%	0%	1%	161
DORCHESTER	68%	28%	1%	3%	706
EDGEFIELD	79%	18%	2%	1%	202
FAIRFIELD	62%	36%	0%	1%	205
FLORENCE	75%	23%	1%	1%	950
GEORGETOWN	75%	22%	0%	3%	334
GREENVILLE	70%	27%	1%	2%	2,995
GREENWOOD	71%	26%	1%	1%	450
HAMPTON	82%	18%	0%	0%	95
HORRY	76%	20%	1%	3%	1,162
JASPER	73%	23%	0%	4%	127
KERSHAW	78%	20%	1%	1%	218
LANCASTER	64%	34%	1%	0%	501
LAURENS	74%	24%	2%	1%	599
LEE	31%	67%	1%	2%	123
LEXINGTON	77%	19%	3%	1%	1,265
MCCORMICK	66%	23%	3%	8%	64
MARION	79%	16%	4%	2%	187
MARLBORO	85%	8%	5%	2%	128
NEWBERRY	74%	24%	1%	1%	285
OCONEE	73%	23%	1%	3%	385
ORANGEBURG	84%	14%	1%	1%	627
PICKENS	71%	25%	1%	3%	657
RICHLAND	79%	17%	2%	2%	2,089
SALUDA	62%	31%	3%	4%	116
SPARTANBURG	72%	23%	2%	2%	1,642
SUMTER	80%	17%	2%	1%	642
UNION	80%	14%	2%	3%	307
WILLIAMSBURG	71%	25%	0%	4%	218
YORK	77%	20%	0%	3%	1,110
TRANSITIONAL ADM.	0%	2%	96%	1%	82
STATE TOTAL	73%	23%	2%	2%	
ACTIVE OFFENDERS	19,431	6,127	427	562	26,547

ACTIVE PROBATION OFFENDERS BY LEVEL OF SUPERVISION

FIGURE 3



**S.C. DEPARTMENT OF
PROBATION, PAROLE AND PARDON SERVICES
PROBATION CLOSURES BY TYPE
TABLE 4-B**

COUNTY	SUCCESSFUL	SUCCESSFUL RATE	UNSUCCESSFUL	UNSUCCESSFUL RATE
ABBEVILLE	69	63%	40	37%
AIKEN	228	68%	106	32%
ALLENDALE	22	69%	10	31%
ANDERSON	359	62%	223	38%
BAMBERG	53	84%	10	16%
BARNWELL	49	67%	24	33%
BEAUFORT	168	61%	106	39%
BERKELEY	381	75%	129	25%
CALHOUN	29	81%	7	19%
CHARLESTON	798	64%	446	36%
CHEROKEE	117	57%	90	43%
CHESTER	64	67%	31	33%
CHESTERFIELD	68	48%	73	52%
CLARENDON	71	70%	30	30%
COLLETON	80	77%	24	23%
DARLINGTON	83	52%	77	48%
DILLON	68	58%	50	42%
DORCHESTER	220	68%	105	32%
EDGEFIELD	57	63%	33	37%
FAIRFIELD	78	79%	21	21%
FLORENCE	351	65%	191	35%
GEORGETOWN	143	68%	66	32%
GREENVILLE	1006	69%	452	31%
GREENWOOD	180	60%	121	40%
HAMPTON	21	54%	18	46%
HORRY	446	65%	242	35%
JASPER	38	60%	25	40%
KERSHAW	65	66%	34	34%
LANCASTER	152	73%	56	27%
LAURENS	207	76%	65	24%
LEE	33	62%	20	38%
LEXINGTON	487	72%	189	28%
MCCORMICK	19	95%	1	5%
MARION	91	66%	47	34%
MARLBORO	83	67%	40	33%
NEWBERRY	145	70%	61	30%
OCONEE	146	65%	77	35%
ORANGEBURG	203	77%	59	23%
PICKENS	211	71%	88	29%
RICHLAND	697	63%	417	37%
SALUDA	47	87%	7	13%
SPARTANBURG	541	48%	582	52%
SUMTER	232	64%	129	36%
UNION	114	65%	61	35%
WILLIAMSBURG	73	60%	49	40%
YORK	506	66%	257	34%
TRANSITIONAL ADM.	248	98%	4	2%
STATE TOTAL	9,547	66%	4,993	34%

**S.C. DEPARTMENT OF
PROBATION, PAROLE AND PARDON SERVICES
PROBATION ADMISSIONS BY AGE*
TABLE 5-B**

COUNTY	Age 24 & Under	Percent 24 & Under	Age 25 & Over	Percent 25 & Over
ABBEVILLE	24	20%	95	80%
AIKEN	137	27%	371	73%
ALLENDALE	12	50%	12	50%
ANDERSON	123	21%	469	79%
BAMBERG	15	44%	19	56%
BARNWELL	19	28%	50	72%
BEAUFORT	105	36%	189	64%
BERKELEY	155	27%	423	73%
CALHOUN	15	34%	29	66%
CHARLESTON	472	33%	966	67%
CHEROKEE	57	23%	189	77%
CHESTER	55	32%	116	68%
CHESTERFIELD	31	23%	101	77%
CLARENDON	38	36%	69	64%
COLLETON	37	26%	103	74%
DARLINGTON	73	26%	210	74%
DILLON	58	35%	109	65%
DORCHESTER	118	37%	204	63%
EDGEFIELD	21	19%	90	81%
FAIRFIELD	42	33%	86	67%
FLORENCE	224	30%	517	70%
GEORGETOWN	90	33%	180	67%
GREENVILLE	371	24%	1181	76%
GREENWOOD	90	28%	230	72%
HAMPTON	24	45%	29	55%
HORRY	208	28%	544	72%
JASPER	22	35%	40	65%
KERSHAW	30	27%	82	73%
LANCASTER	90	31%	204	69%
LAURENS	117	33%	243	68%
LEE	24	28%	62	72%
LEXINGTON	208	26%	601	74%
MCCORMICK	14	33%	29	67%
MARION	49	34%	96	66%
MARLBORO	26	27%	72	73%
NEWBERRY	60	31%	135	69%
OCONEE	65	26%	184	74%
ORANGEBURG	116	30%	268	70%
PICKENS	77	24%	248	76%
RICHLAND	343	30%	799	70%
SALUDA	17	22%	61	78%
SPARTANBURG	230	24%	736	76%
SUMTER	124	31%	273	69%
UNION	39	27%	104	73%
WILLIAMSBURG	49	32%	106	68%
YORK	271	35%	505	65%
TRANSITIONAL ADM.	2	13%	13	87%
STATE TOTAL	4,587	29%	11,442	71%

Section C
Parole



Parole

The Department is charged with the responsibility of supervising those offenders paroled by the SC Board of Pardons and Paroles. Parole is the conditional release of an individual from imprisonment, but not from the legal custody of the state, to complete his/her sentence outside a correctional institution under conditions and provisions of supervision determined by the Board. Should an individual be granted parole, he/she must agree to abide by certain conditions of community supervision. The violation of any of these conditions is sufficient grounds for revocation of parole by the Board, and the imposition of the remainder of the original sentence of incarceration.

Tables 1-C and 2-C pertain to data on all parole case admissions for FY 07-08. Parole includes regular parole, intensive parole, provisional parole, not guilty by reason of insanity (NGRI), Department of Juvenile Justice, early release and community supervision cases.

Table 1-C shows parole admissions by type of offense. A larger percent of parole admissions, 37%, fall into the violent category, as compared to 3% for probation admissions and 1% for YOA admissions.

Table 2-C describes all parole admissions by gender and race. Parole admissions consisted primarily of males, 90%, with a racial composition of 63% black, 2% other, and 35% white.

Table 3-C and Figure 4 describe active parolees by level of supervision on June 30, 2008. This figure does not include new and unclassified offenders. Among parolees, standard supervision offenders represented 68% of the parolee population, followed by high level at 15%. Intensive supervision accounted for 9% of the parolee population and sex offender supervision was 7%.

Table 4-C presents parole case closures by type (successful or unsuccessful). The overall success rate for parolees (85%) was higher than that of probationers (66%).

Table 5-C describes the parole population by age category.

**S.C. DEPARTMENT OF
PROBATION, PAROLE AND PARDON SERVICES
PAROLE ADMISSIONS BY TYPE OF OFFENSE
TABLE 1-C**

COUNTY	OMNIBUS VIOLENT	PERCENT VIOLENT	NONVIOLENT	PERCENT NONVIOLENT	TOTAL
ABBEVILLE	2	29%	5	71%	7
AIKEN	20	35%	37	65%	57
ALLENDALE	0	0%	2	100%	2
ANDERSON	39	49%	41	51%	80
BAMBERG	1	20%	4	80%	5
BARNWELL	2	22%	7	78%	9
BEAUFORT	8	27%	22	73%	30
BERKELEY	16	41%	23	59%	39
CALHOUN	2	50%	2	50%	4
CHARLESTON	43	45%	53	55%	96
CHEROKEE	5	25%	15	75%	20
CHESTER	2	22%	7	78%	9
CHESTERFIELD	1	14%	6	86%	7
CLARENDON	6	33%	12	67%	18
COLLETON	4	40%	6	60%	10
DARLINGTON	9	38%	15	63%	24
DILLON	4	44%	5	56%	9
DORCHESTER	9	29%	22	71%	31
EDGEFIELD	3	43%	4	57%	7
FAIRFIELD	4	67%	2	33%	6
FLORENCE	13	34%	25	66%	38
GEORGETOWN	5	15%	28	85%	33
GREENVILLE	44	33%	90	67%	134
GREENWOOD	11	50%	11	50%	22
HAMPTON	2	40%	3	60%	5
HORRY	39	44%	50	56%	89
JASPER	4	36%	7	64%	11
KERSHAW	6	67%	3	33%	9
LANCASTER	7	39%	11	61%	18
LAURENS	13	45%	16	55%	29
LEE	3	60%	2	40%	5
LEXINGTON	18	25%	54	75%	72
MCCORMICK	5	83%	1	17%	6
MARION	9	35%	17	65%	26
MARLBORO	4	21%	15	79%	19
NEWBERRY	3	30%	7	70%	10
OCONEE	10	43%	13	57%	23
ORANGEBURG	13	37%	22	63%	35
PICKENS	8	35%	15	65%	23
RICHLAND	66	38%	107	62%	173
SALUDA	1	17%	5	83%	6
SPARTANBURG	50	45%	60	55%	110
SUMTER	14	36%	25	64%	39
UNION	5	29%	12	71%	17
WILLIAMSBURG	4	40%	6	60%	10
YORK	28	32%	60	68%	88
TRANSITIONAL ADM.	19	43%	25	57%	44
STATE TOTAL	584	37%	980	63%	1,564

**S.C. DEPARTMENT OF
PROBATION, PAROLE AND PARDON SERVICES
PAROLE ADMISSIONS BY GENDER AND RACE
TABLE 2-C
N=1,564**

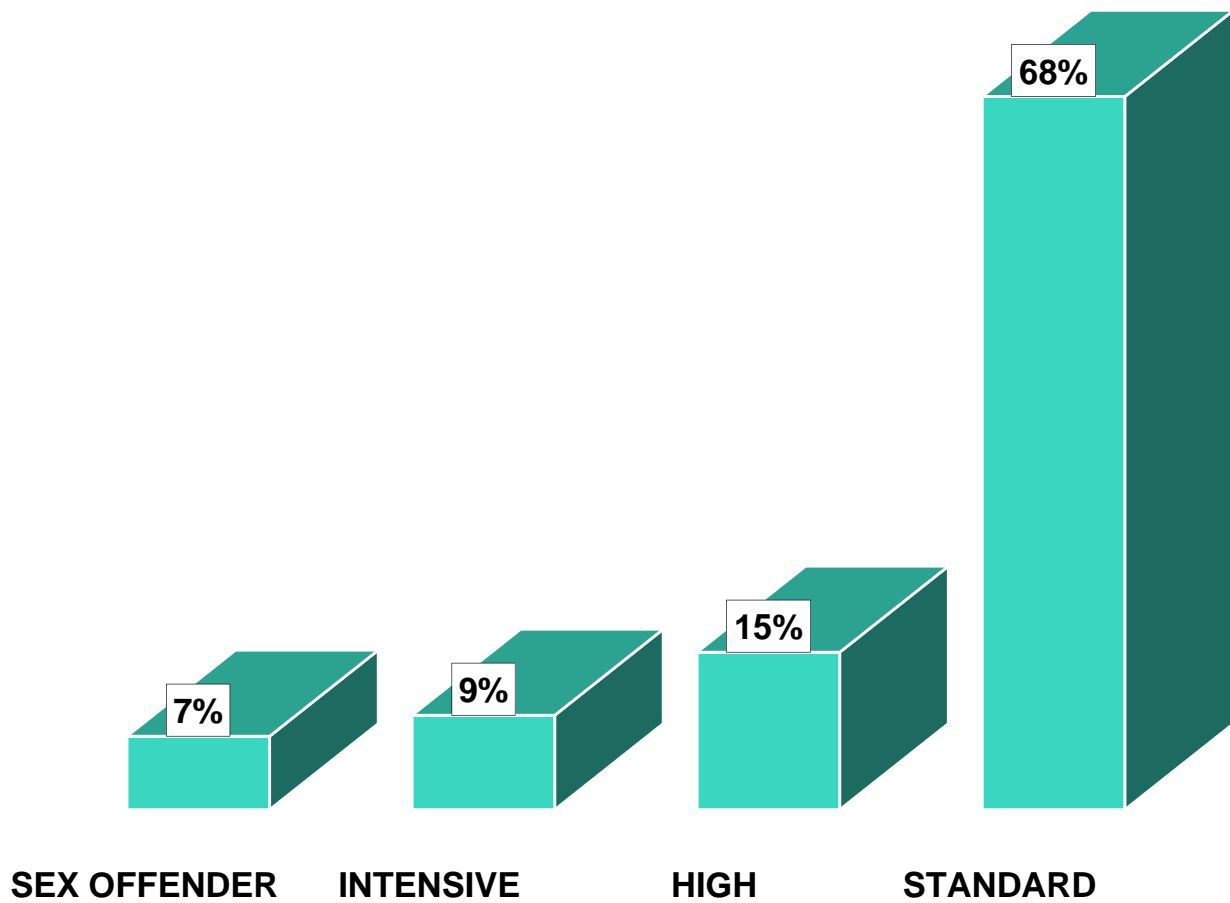
COUNTY	PERCENT MALE	PERCENT FEMALE	PERCENT BLACK	PERCENT OTHER	PERCENT WHITE
ABBEVILLE	86%	14%	71%	14%	14%
AIKEN	91%	9%	61%	0%	39%
ALLENDALE	100%	0%	100%	0%	0%
ANDERSON	85%	15%	39%	1%	60%
BAMBERG	100%	0%	80%	0%	20%
BARNWELL	100%	0%	100%	0%	0%
BEAUFORT	90%	10%	53%	13%	33%
BERKELEY	95%	5%	64%	0%	36%
CALHOUN	100%	0%	75%	0%	25%
CHARLESTON	95%	5%	76%	3%	21%
CHEROKEE	85%	15%	65%	0%	35%
CHESTER	100%	0%	33%	11%	56%
CHESTERFIELD	86%	14%	86%	0%	14%
CLARENDON	100%	0%	72%	0%	28%
COLLETON	100%	0%	50%	0%	50%
DARLINGTON	88%	13%	67%	0%	33%
DILLON	100%	0%	89%	11%	0%
DORCHESTER	90%	10%	58%	3%	39%
EDGEFIELD	100%	0%	57%	0%	43%
FAIRFIELD	100%	0%	83%	0%	17%
FLORENCE	92%	8%	71%	3%	26%
GEORGETOWN	91%	9%	82%	0%	18%
GREENVILLE	89%	11%	60%	1%	40%
GREENWOOD	95%	5%	77%	5%	18%
HAMPTON	80%	20%	80%	0%	20%
HORRY	92%	8%	55%	4%	40%
JASPER	100%	0%	80%	0%	20%
KERSHAW	100%	0%	33%	0%	67%
LANCASTER	89%	11%	78%	0%	22%
LAURENS	93%	7%	69%	0%	31%
LEE	80%	20%	80%	0%	20%
LEXINGTON	83%	17%	43%	4%	53%
MCCORMICK	100%	0%	100%	0%	0%
MARION	88%	12%	85%	0%	15%
MARLBORO	100%	0%	84%	0%	16%
NEWBERRY	90%	10%	90%	0%	10%
OCONEE	83%	17%	17%	9%	74%
ORANGEBURG	89%	11%	74%	0%	26%
PICKENS	87%	13%	22%	0%	78%
RICHLAND	84%	16%	85%	0%	15%
SALUDA	100%	0%	83%	17%	0%
SPARTANBURG	86%	14%	40%	2%	58%
SUMTER	92%	8%	72%	0%	28%
UNION	100%	0%	47%	0%	53%
WILLIAMSBURG	100%	0%	80%	0%	20%
YORK	91%	9%	63%	3%	34%
TRANSITIONAL ADM.	91%	9%	100%	0%	0%
STATE TOTAL	90%	10%	63%	2%	35%

**S.C. DEPARTMENT OF
PROBATION, PAROLE AND PARDON SERVICES
ACTIVE PAROLE OFFENDERS BY LEVEL
OF SUPERVISION, JUNE 30, 2008
TABLE 3-C**

COUNTY	STANDARD	HIGH	INTENSIVE	SEX OFFENDERS	TOTAL
ABBEVILLE	78%	11%	0%	11%	18
AIKEN	74%	15%	8%	3%	138
ALLENDALE	71%	14%	0%	14%	7
ANDERSON	64%	19%	6%	11%	154
BAMBERG	90%	0%	0%	10%	10
BARNWELL	61%	22%	6%	11%	18
BEAUFORT	72%	17%	9%	2%	46
BERKELEY	72%	5%	11%	12%	74
CALHOUN	63%	25%	13%	0%	8
CHARLESTON	62%	21%	13%	4%	209
CHEROKEE	59%	24%	13%	4%	46
CHESTER	75%	14%	7%	4%	28
CHESTERFIELD	54%	23%	15%	8%	13
CLARENDON	70%	4%	15%	11%	27
COLLETON	56%	24%	12%	8%	25
DARLINGTON	70%	11%	14%	5%	44
DILLON	88%	0%	4%	8%	26
DORCHESTER	70%	18%	6%	6%	50
EDGEFIELD	73%	9%	9%	9%	11
FAIRFIELD	64%	36%	0%	0%	14
FLORENCE	71%	16%	6%	7%	118
GEORGETOWN	62%	17%	15%	6%	53
GREENVILLE	61%	18%	13%	9%	327
GREENWOOD	69%	14%	7%	10%	42
HAMPTON	56%	11%	22%	11%	9
HORRY	73%	14%	6%	7%	162
JASPER	67%	30%	0%	4%	27
KERSHAW	65%	13%	6%	16%	31
LANCASTER	70%	11%	14%	5%	37
LAURENS	71%	9%	11%	9%	65
LEE	50%	27%	0%	23%	22
LEXINGTON	72%	15%	6%	7%	149
MCCORMICK	71%	14%	7%	7%	14
MARION	80%	12%	7%	0%	41
MARLBORO	66%	13%	19%	3%	32
NEWBERRY	71%	15%	3%	12%	34
OCONEE	46%	33%	10%	10%	39
ORANGEBURG	81%	2%	9%	8%	89
PICKENS	65%	19%	5%	11%	57
RICHLAND	71%	11%	11%	6%	390
SALUDA	56%	19%	19%	6%	16
SPARTANBURG	64%	22%	10%	3%	193
SUMTER	73%	15%	6%	6%	104
UNION	83%	10%	7%	0%	30
WILLIAMSBURG	65%	24%	9%	3%	34
YORK	71%	12%	9%	9%	197
TRANSITIONAL ADM.	80%	0%	20%	0%	5
STATE TOTAL	68%	15%	9%	7%	
ACTIVE PAROLEES	2,245	506	305	227	3,283

ACTIVE PAROLE OFFENDERS BY LEVEL OF SUPERVISION

FIGURE 4



**S.C. DEPARTMENT OF
PROBATION, PAROLE AND PARDON SERVICES
PAROLE CLOSURES BY TYPE
TABLE 4-C**

COUNTY	SUCCESSFUL	SUCCESSFUL RATE	UNSUCCESSFUL	UNSUCCESSFUL RATE
ABBEVILLE	5	100%	0	0%
AIKEN	28	88%	4	13%
ALLENDALE	2	100%	0	0%
ANDERSON	63	89%	8	11%
BAMBERG	4	100%	0	0%
BARNWELL	8	100%	0	0%
BEAUFORT	17	94%	1	6%
BERKELEY	27	96%	1	4%
CALHOUN	4	80%	1	20%
CHARLESTON	70	82%	15	18%
CHEROKEE	17	74%	6	26%
CHESTER	7	88%	1	13%
CHESTERFIELD	7	78%	2	22%
CLARENDON	14	82%	3	18%
COLLETON	7	100%	0	0%
DARLINGTON	21	84%	4	16%
DILLON	11	73%	4	27%
DORCHESTER	23	88%	3	12%
EDGEFIELD	8	80%	2	20%
FAIRFIELD	5	100%	0	0%
FLORENCE	48	76%	15	24%
GEORGETOWN	15	83%	3	17%
GREENVILLE	112	88%	15	12%
GREENWOOD	15	94%	1	6%
HAMPTON	7	70%	3	30%
HORRY	62	82%	14	18%
JASPER	3	100%	0	0%
KERSHAW	8	73%	3	27%
LANCASTER	5	83%	1	17%
LAURENS	27	96%	1	4%
LEE	8	80%	2	20%
LEXINGTON	42	88%	6	13%
MCCORMICK	1	100%	0	0%
MARION	11	58%	8	42%
MARLBORO	18	75%	6	25%
NEWBERRY	11	73%	4	27%
OCONEE	19	90%	2	10%
ORANGEBURG	27	79%	7	21%
PICKENS	27	90%	3	10%
RICHLAND	118	91%	12	9%
SALUDA	8	100%	0	0%
SPARTANBURG	66	77%	20	23%
SUMTER	49	82%	11	18%
UNION	10	77%	3	23%
WILLIAMSBURG	10	67%	5	33%
YORK	76	85%	13	15%
TRANSITIONAL ADMIN.	58	100%	0	0%
STATE TOTAL	1209	85%	213	15%

**S.C. DEPARTMENT OF
PROBATION, PAROLE AND PARDON SERVICES
PAROLE ADMISSIONS BY AGE
TABLE 5-C**

COUNTY	Age 24 & Under	Percent 24 & Under	Age 25 & Over	Percent 25 & Over
ABBEVILLE	1	14%	6	86%
AIKEN	4	7%	53	93%
ALLENDALE	0	0%	2	100%
ANDERSON	8	10%	72	90%
BAMBERG	1	20%	4	80%
BARNWELL	1	11%	8	89%
BEAUFORT	6	20%	24	80%
BERKELEY	9	23%	30	77%
CALHOUN	0	0%	4	100%
CHARLESTON	16	17%	80	83%
CHEROKEE	2	10%	18	90%
CHESTER	1	11%	8	89%
CHESTERFIELD	1	14%	6	86%
CLARENDON	5	28%	13	72%
COLLETON	1	10%	9	90%
DARLINGTON	6	25%	18	75%
DILLON	1	11%	8	89%
DORCHESTER	3	10%	28	90%
EDGEFIELD	1	14%	6	86%
FAIRFIELD	0	0%	6	100%
FLORENCE	4	11%	34	89%
GEORGETOWN	4	12%	29	88%
GREENVILLE	14	10%	120	90%
GREENWOOD	1	5%	21	95%
HAMPTON	1	20%	4	80%
HORRY	11	12%	78	88%
JASPER	2	18%	9	82%
KERSHAW	3	33%	6	67%
LANCASTER	2	11%	16	89%
LAURENS	3	10%	26	90%
LEE	2	40%	3	60%
LEXINGTON	9	13%	63	88%
MCCORMICK	1	17%	5	83%
MARION	6	23%	20	77%
MARLBORO	3	16%	16	84%
NEWBERRY	3	30%	7	70%
OCONEE	3	13%	20	87%
ORANGEBURG	2	6%	33	94%
PICKENS	2	9%	21	91%
RICHLAND	36	21%	137	79%
SALUDA	1	17%	5	83%
SPARTANBURG	13	12%	97	88%
SUMTER	5	13%	34	87%
UNION	1	6%	16	94%
WILLIAMSBURG	2	20%	8	80%
YORK	16	18%	72	82%
TRANSITIONAL ADM.	7	16%	37	84%
STATE TOTAL	224	14%	1340	86%

Section D
Youthful Offender



Youthful Offender Conditional Release

Inmates ages 17 through 24, sentenced under the state's Youthful Offender Act (YOA) to an indeterminate period of incarceration (not to exceed six years) within the S.C. Department of Corrections (SCDC), may be conditionally released prior to that time, based on offense, category, adjustment and evaluation while incarcerated. While under SCDPPPS supervision, these offenders remain under the jurisdiction of SCDC.

Tables 1-D and 2-D present data on all YOA case admissions for FY 07-08.

Table 1-D displays YOA admissions by type of offense. YOA violent admissions at 1% is less than for those admitted to probation at 2%.

Table 2-D illustrates YOA admissions by gender and race. YOA admissions were predominately male (90%) and black (69%).

Table 3-D and Figure 5 describe the active population for YOA conditional release in terms of level of supervision on June 30, 2008. Twenty percent (20%) are supervised at a high level. Intensive level supervision accounted for 23%, while 55% are supervised at standard level and 2% at the sex offender level.

Table 4-D shows YOA offenders are more inclined to close unsuccessfully (56%) than parolees (15%).

Table 5-D describes YOA admissions by age category.

**S.C. DEPARTMENT OF
PROBATION, PAROLE AND PARDON SERVICES
YOA ADMISSIONS BY TYPE OF OFFENSE
TABLE 1-D**

COUNTY	OMNIBUS VIOLENT	PERCENT VIOLENT	NONVIOLENT	PERCENT NONVIOLENT	TOTAL
ABBEVILLE	0	0%	6	100%	6
AIKEN	1	4%	26	96%	27
ALLENDALE	0	0%	12	100%	12
ANDERSON	0	0%	35	100%	35
BAMBERG	0	0%	5	100%	5
BARNWELL	0	0%	9	100%	9
BEAUFORT	0	0%	31	100%	31
BERKELEY	0	0%	66	100%	66
CALHOUN	0	0%	11	100%	11
CHARLESTON	1	1%	176	99%	177
CHEROKEE	0	0%	20	100%	20
CHESTER	0	0%	7	100%	7
CHESTERFIELD	0	0%	19	100%	19
CLARENDON	1	6%	17	94%	18
COLLETON	0	0%	24	100%	24
DARLINGTON	2	6%	29	94%	31
DILLON	0	0%	14	100%	14
DORCHESTER	1	2%	55	98%	56
EDGEFIELD	0	0%	4	100%	4
FAIRFIELD	0	0%	9	100%	9
FLORENCE	0	0%	60	100%	60
GEORGETOWN	0	0%	17	100%	17
GREENVILLE	5	6%	82	94%	87
GREENWOOD	0	0%	20	100%	20
HAMPTON	1	17%	5	83%	6
HORRY	0	0%	49	100%	49
JASPER	0	0%	12	100%	12
KERSHAW	0	0%	13	100%	13
LANCASTER	0	0%	9	100%	9
LAURENS	2	7%	25	93%	27
LEE	0	0%	11	100%	11
LEXINGTON	0	0%	48	100%	48
MCCORMICK	0	0%	3	100%	3
MARION	0	0%	21	100%	21
MARLBORO	0	0%	18	100%	18
NEWBERRY	0	0%	10	100%	10
OCONEE	0	0%	16	100%	16
ORANGEBURG	0	0%	37	100%	37
PICKENS	1	5%	19	95%	20
RICHLAND	2	2%	91	98%	93
SALUDA	0	0%	12	100%	12
SPARTANBURG	1	1%	74	99%	75
SUMTER	1	2%	64	98%	65
UNION	0	0%	15	100%	15
WILLIAMSBURG	0	0%	18	100%	18
YORK	0	0%	48	100%	48
TRANSITIONAL ADM.	0	0%	38	100%	38
STATE TOTAL	19	1%	1,410	99%	1,429

**S.C. DEPARTMENT OF
PROBATION, PAROLE AND PARDON SERVICES
YOA ADMISSIONS BY GENDER AND RACE
TABLE 2-D
N=1,429**

COUNTY	PERCENT MALE	PERCENT FEMALE	PERCENT BLACK	PERCENT OTHER	PERCENT WHITE
ABBEVILLE	86%	14%	67%	0%	33%
AIKEN	91%	9%	56%	4%	41%
ALLENDALE	100%	0%	100%	0%	0%
ANDERSON	85%	15%	40%	0%	60%
BAMBERG	100%	0%	60%	0%	40%
BARNWELL	100%	0%	67%	0%	33%
BEAUFORT	90%	10%	71%	0%	29%
BERKELEY	95%	5%	56%	0%	44%
CALHOUN	100%	0%	82%	0%	18%
CHARLESTON	95%	5%	88%	1%	11%
CHEROKEE	85%	15%	55%	0%	45%
CHESTER	100%	0%	71%	0%	29%
CHESTERFIELD	86%	14%	58%	5%	37%
CLARENDON	100%	0%	67%	0%	33%
COLLETON	100%	0%	67%	4%	29%
DARLINGTON	88%	13%	61%	0%	39%
DILLON	100%	0%	93%	7%	0%
DORCHESTER	90%	10%	61%	0%	39%
EDGEFIELD	100%	0%	75%	0%	25%
FAIRFIELD	100%	0%	89%	0%	11%
FLORENCE	92%	8%	78%	0%	22%
GEORGETOWN	91%	9%	82%	0%	18%
GREENVILLE	89%	11%	64%	1%	34%
GREENWOOD	95%	5%	90%	0%	10%
HAMPTON	80%	20%	83%	0%	17%
HORRY	92%	8%	51%	2%	47%
JASPER	100%	0%	50%	0%	50%
KERSHAW	100%	0%	54%	0%	46%
LANCASTER	89%	11%	56%	0%	44%
LAURENS	93%	7%	59%	0%	41%
LEE	80%	20%	100%	0%	0%
LEXINGTON	83%	17%	42%	2%	56%
MCCORMICK	100%	0%	67%	0%	33%
MARION	88%	12%	86%	0%	14%
MARLBORO	100%	0%	61%	0%	39%
NEWBERRY	90%	10%	70%	0%	30%
OCONEE	83%	17%	25%	0%	75%
ORANGEBURG	89%	11%	92%	0%	8%
PICKENS	87%	13%	30%	0%	70%
RICHLAND	84%	16%	87%	0%	13%
SALUDA	100%	0%	83%	0%	17%
SPARTANBURG	86%	14%	67%	0%	33%
SUMTER	92%	8%	85%	0%	15%
UNION	100%	0%	47%	0%	53%
WILLIAMSBURG	100%	0%	89%	0%	11%
YORK	91%	9%	56%	0%	44%
TRANSITIONAL ADM.	90%	10%	42%	3%	55%
STATE TOTAL	90%	10%	69%	1%	31%

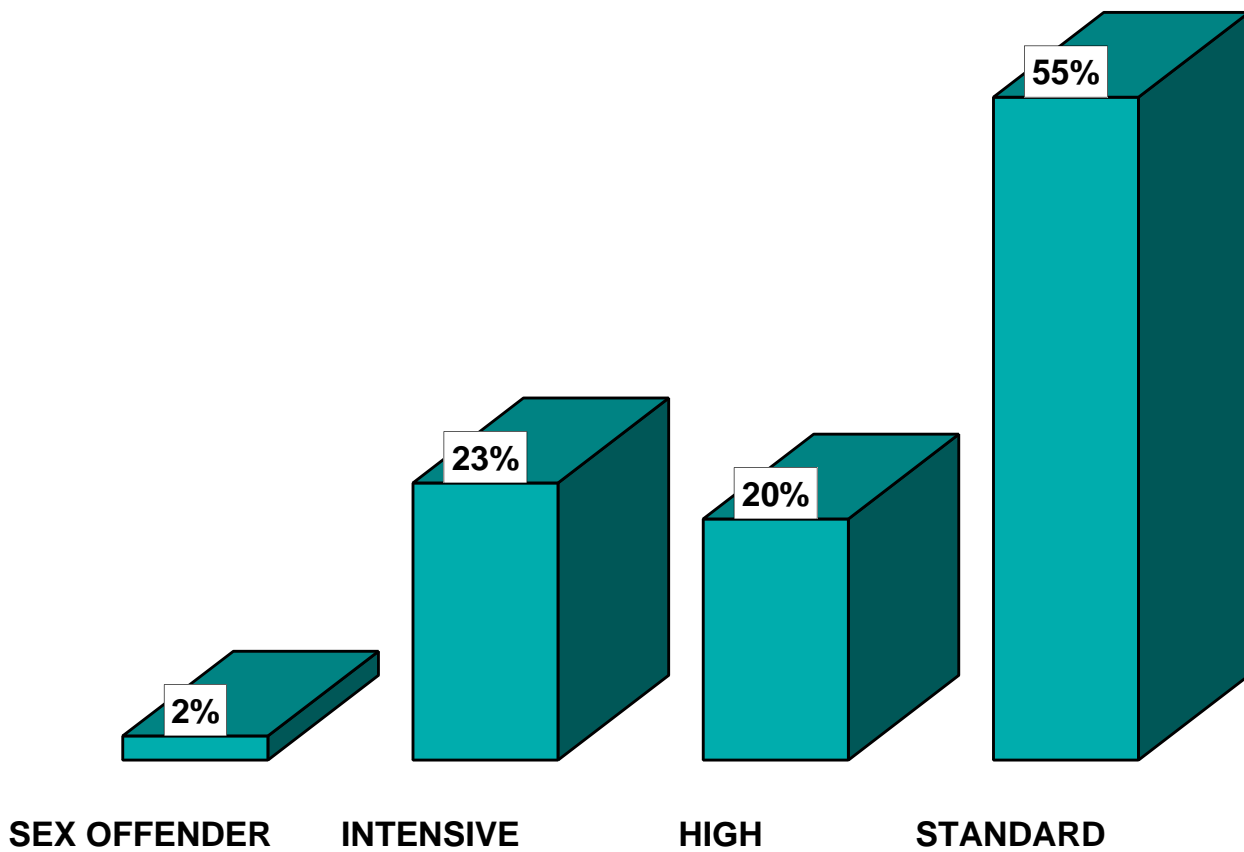
Percent may not equal 100 due to rounding.

**S.C. DEPARTMENT OF
PROBATION, PAROLE AND PARDON SERVICES
ACTIVE YOA OFFENDERS BY LEVEL
OF SUPERVISION, JUNE 30, 2008
TABLE 3-D**

COUNTY	ADMIN	HIGH	INTENSIVE	SEX OFFENDER	TOTAL
ABBEVILLE	67%	0%	17%	17%	6
AIKEN	71%	8%	18%	4%	51
ALLENDALE	38%	38%	25%	0%	16
ANDERSON	69%	6%	16%	8%	49
BAMBERG	57%	29%	14%	0%	7
BARNWELL	75%	8%	17%	0%	12
BEAUFORT	56%	30%	14%	0%	43
BERKELEY	62%	15%	23%	0%	97
CALHOUN	30%	30%	40%	0%	10
CHARLESTON	49%	29%	19%	3%	260
CHEROKEE	48%	9%	27%	15%	33
CHESTER	56%	22%	22%	0%	9
CHESTERFIELD	57%	14%	29%	0%	21
CLARENDON	82%	12%	6%	0%	17
COLLETON	37%	32%	24%	8%	38
DARLINGTON	52%	16%	32%	0%	25
DILLON	81%	0%	19%	0%	16
DORCHESTER	68%	9%	21%	1%	76
EDGEFIELD	50%	50%	0%	0%	4
FAIRFIELD	43%	50%	7%	0%	14
FLORENCE	53%	32%	13%	3%	72
GEORGETOWN	60%	20%	20%	0%	20
GREENVILLE	46%	27%	25%	2%	104
GREENWOOD	52%	26%	11%	11%	27
HAMPTON	40%	20%	40%	0%	10
HORRY	54%	20%	24%	3%	76
JASPER	50%	42%	8%	0%	12
KERSHAW	60%	20%	16%	4%	25
LANCASTER	50%	15%	35%	0%	20
LAURENS	55%	18%	23%	5%	44
LEE	7%	53%	33%	7%	15
LEXINGTON	47%	16%	33%	4%	55
MCCORMICK	100%	0%	0%	0%	1
MARION	37%	26%	37%	0%	19
MARLBORO	43%	29%	29%	0%	14
NEWBERRY	46%	23%	31%	0%	13
OCONEE	30%	30%	30%	9%	23
ORANGEBURG	73%	7%	19%	0%	67
PICKENS	40%	40%	16%	4%	25
RICHLAND	70%	11%	19%	0%	207
SALUDA	36%	36%	18%	9%	11
SPARTANBURG	31%	6%	60%	3%	62
SUMTER	69%	13%	17%	1%	89
UNION	53%	37%	11%	0%	19
WILLIAMSBURG	36%	32%	32%	0%	22
YORK	57%	16%	27%	0%	56
TRANSITIONAL ADM.	22%	0%	78%	0%	9
STATE TOTAL	55%	20%	23%	2%	
ACTIVE YOA OFFENDERS	1,060	382	433	46	1,921

ACTIVE YOA OFFENDERS BY LEVEL OF SUPERVISION

FIGURE 5



**S.C. DEPARTMENT OF
PROBATION, PAROLE AND PARDON SERVICES
YOA CLOSURES BY TYPE
TABLE 4-D**

COUNTY	SUCCESSFUL	SUCCESSFUL RATE	UNSUCCESSFUL	UNSUCCESSFUL RATE
ABBEVILLE	2	67%	1	33%
AIKEN	17	57%	13	43%
ALLENDALE	3	38%	5	63%
ANDERSON	8	25%	24	75%
BAMBERG	1	100%	0	0%
BARNWELL	4	57%	3	43%
BEAUFORT	7	64%	4	36%
BERKELEY	25	52%	23	48%
CALHOUN	3	60%	2	40%
CHARLESTON	62	39%	95	61%
CHEROKEE	4	36%	7	64%
CHESTER	5	45%	6	55%
CHESTERFIELD	11	50%	11	50%
CLARENDON	3	38%	5	63%
COLLETON	6	38%	10	63%
DARLINGTON	7	32%	15	68%
DILLON	8	47%	9	53%
DORCHESTER	24	67%	12	33%
EDGEFIELD	8	80%	2	20%
FAIRFIELD	3	50%	3	50%
FLORENCE	21	37%	36	63%
GEORGETOWN	6	40%	9	60%
GREENVILLE	34	43%	45	57%
GREENWOOD	14	45%	17	55%
HAMPTON	4	44%	5	56%
HORRY	15	58%	11	42%
JASPER	7	50%	7	50%
KERSHAW	1	14%	6	86%
LANCASTER	7	32%	15	68%
LAURENS	12	60%	8	40%
LEE	1	25%	3	75%
LEXINGTON	20	50%	20	50%
MCCORMICK	0	0%	2	0%
MARION	9	47%	10	53%
MARLBORO	11	46%	13	54%
NEWBERRY	7	54%	6	46%
OCONEE	9	64%	5	36%
ORANGEBURG	25	53%	22	47%
PICKENS	9	64%	5	36%
RICHLAND	37	45%	46	55%
SALUDA	2	40%	3	60%
SPARTANBURG	7	12%	52	88%
SUMTER	17	46%	20	54%
UNION	5	42%	7	58%
WILLIAMSBURG	6	38%	10	63%
YORK	33	46%	39	54%
TRANSITIONAL ADMIN	9	75%	3	25%
STATE TOTAL	539	44%	675	56%

**S.C. DEPARTMENT OF
PROBATION, PAROLE AND PARDON SERVICES
YOA ADMISSIONS BY AGE
TABLE 5-D**

COUNTY	Age 24 & Under	Percent 24 & Under	Age 25 & Over	Percent 25 & Over
ABBEVILLE	6	100%	0	0%
AIKEN	22	81%	5	19%
ALLENDALE	11	92%	1	8%
ANDERSON	33	94%	2	6%
BAMBERG	5	100%	0	0%
BARNWELL	7	78%	2	22%
BEAUFORT	30	97%	1	3%
BERKELEY	61	92%	5	8%
CALHOUN	10	91%	1	9%
CHARLESTON	148	84%	29	16%
CHEROKEE	14	70%	6	30%
CHESTER	5	71%	2	29%
CHESTERFIELD	17	89%	2	11%
CLARENDON	17	94%	1	6%
COLLETON	20	83%	4	17%
DARLINGTON	23	74%	8	26%
DILLON	13	93%	1	7%
DORCHESTER	53	95%	3	5%
EDGEFIELD	3	75%	1	25%
FAIRFIELD	6	67%	3	33%
FLORENCE	51	85%	9	15%
GEORGETOWN	12	71%	5	29%
GREENVILLE	69	79%	18	21%
GREENWOOD	18	90%	2	10%
HAMPTON	6	100%	0	0%
HORRY	43	88%	6	12%
JASPER	11	92%	1	8%
KERSHAW	13	100%	0	0%
LANCASTER	6	67%	3	33%
LAURENS	24	89%	3	11%
LEE	10	91%	1	9%
LEXINGTON	41	85%	7	15%
MCCORMICK	3	100%	0	0%
MARION	20	95%	1	5%
MARLBORO	17	94%	1	6%
NEWBERRY	10	100%	0	0%
OCONEE	14	88%	2	13%
ORANGEBURG	34	92%	3	8%
PICKENS	14	70%	6	30%
RICHLAND	75	81%	18	19%
SALUDA	10	83%	2	17%
SPARTANBURG	64	85%	11	15%
SUMTER	59	91%	6	9%
UNION	14	93%	1	7%
WILLIAMSBURG	15	83%	3	17%
YORK	41	85%	7	15%
TRANSITIONAL ADM.	33	87%	5	13%
STATE TOTAL	1,231	86%	198	14%

Section E
Violations



Violations

Offenders charged by their supervising Agents with violations of the conditions of supervision are reviewed through an administrative hearing process to determine if probable cause of a violation exists. If a violation is found, a determination is made as to which community sanctions should be imposed, or whether the case should be referred to the Board or the Court for revocation action.

Table 1-E provides data by county on the violation process. Statewide, a total of 6,661 violation hearings were held. At those hearings, 4,005 cases were continued or recommended for continuation, while 2,656 cases were revoked or recommended for revocation.

Table 2-E provides a comparison of changes in active population and the type of closure for FY 04 to FY 08.

**S.C. DEPARTMENT OF
PROBATION, PAROLE AND PARDON SERVICES
VIOLATIONS BY COUNTY
TABLE 1-E**

COUNTY	CASES HEARD	CASES CONTINUED OR RECOMMENDED FOR CONTINUATION	CASES REVOKED OR RECOMMENDED FOR REVOCATION
ABBEVILLE	4	3	1
AIKEN	332	194	138
ALLENDALE	41	18	23
ANDERSON	477	355	122
BAMBERG	39	28	11
BARNWELL	61	31	30
BEAUFORT	50	26	24
BERKELEY	231	129	102
CALHOUN	86	35	51
CHARLESTON	675	250	425
CHEROKEE	98	51	47
CHESTER	15	7	8
CHESTERFIELD	28	18	10
CLARENDON	44	30	14
COLLETON	74	34	40
DARLINGTON	47	23	24
DILLON	37	11	26
DORCHESTER	240	164	76
EDGEFIELD	62	44	18
FAIRFIELD	19	7	12
FLORENCE	183	109	74
GEORGETOWN	34	7	27
GREENVILLE	997	759	238
GREENWOOD	68	41	27
HAMPTON	39	8	31
HORRY	58	33	25
JASPER	68	42	26
KERSHAW	64	38	26
LANCASTER	72	35	37
LAURENS	67	44	23
LEE	10	5	5
LEXINGTON	268	196	72
MCCORMICK	20	12	8
MARION	27	6	21
MARLBORO	31	13	18
NEWBERRY	78	33	45
OCONEE	84	64	20
ORANGEBURG	250	146	104
PICKENS	116	89	27
RICHLAND	381	226	155
SALUDA	49	24	25
SPARTANBURG	627	391	236
SUMTER	139	85	54
UNION	58	29	29
WILLIAMSBURG	37	17	20
YORK	176	95	81
STATE TOTAL	6,661	4,005	2,656

**SC DEPARTMENT OF
PROBATION, PAROLE AND PARDON SERVICES
CLOSING BY TYPE
TABLE 2-E**

FY 07-08

	Active							Total
	Population	Successful	Exp-I ¹	JC-I ²	Rev-C ³	Rev-T ⁴	Rev-TC ⁵	Unsuccessful
Probation	26,990	9,547	44	19	404	4,313	213	4,993
Parole	1,911	657	13	0	14	147	10	184
YOA	1,921	539	13	0	52	583	27	675
Other Releases	1,372	552	23	0	0	6	0	29
Total	32,194	11,295	93	19	470	5,049	250	5,881
% Unsuccessful			1.6%	0.3%	8.0%	85.9%	4.3%	

FY 06-07

	Active							Total
	Population	Successful	Exp-I ¹	JC-I ²	Rev-C ³	Rev-T ⁴	Rev-TC ⁵	Unsuccessful
Probation	26,578	9,061	24	35	603	4,122	115	4,899
Parole	3,634	737	17	0	20	184	9	230
YOA	2,064	538	14	0	81	534	38	667
Other Releases	1,373	387	19	0	0	5	0	24
Total	33,649	10,723	74	35	704	4,845	162	5,820
% Unsuccessful			1.3%	0.6%	12.1%	83.2%	2.8%	

FY 05-06

	Active							Total
	Population	Successful	Exp-I ¹	JC-I ²	Rev-C ³	Rev-T ⁴	Rev-TC ⁵	Unsuccessful
Probation	26,462	9,539	42	35	556	4,494	124	5,251
Parole	2,578	871	6	0	25	237	14	282
YOA	2,088	572	5	0	74	613	56	748
Other Releases	1,308	419	15	0	0	7	0	22
Total	32,436	11,401	68	35	655	5,351	194	6,303
% Unsuccessful			1.1%	0.6%	10.4%	84.9%	3.1%	

FY 04-05

	Active							Total
	Population	Successful	Exp-I ¹	JC-I ²	Rev-C ³	Rev-T ⁴	Rev-TC ⁵	Unsuccessful
Probation	26,955	9,522	21	24	513	4,399	99	5,056
Parole	2,848	907	8	0	29	235	13	285
YOA	2,191	662	11	0	72	597	40	720
Other Releases	1,047	422	10	0	0	17	0	27
Total	33,041	11,513	50	24	614	5,248	152	6,088
% Unsuccessful			0.8%	0.4%	10.1%	86.2%	2.5%	

FY 03-04

	Active							Total
	Population	Successful	Exp-I ¹	JC-I ²	Rev-C ³	Rev-T ⁴	Rev-TC ⁵	Unsuccessful
Probation	27,172	10,835	19	21	504	4,786	89	5,419
Parole	2,840	943	14	0	27	306	7	354
YOA	2,314	499	4	0	85	648	36	773
Other Releases	779	351	5	0	0	21	0	26
Total	33,105	12,628	42	21	616	5,761	132	6,572
% Unsuccessful			0.6%	0.3%	9.4%	87.7%	2.0%	

Footnotes:

¹ Exp-I - Expired Offender in Institution

² JC-I - Judicial Closure in Institution

³ Rev-C - Revoke, New Conviction

⁴ Rev-T - Revoke, Technical Charges

⁵ Rev TC - Revoke, Technical Charges & New Charges Pending

Summary



Summary

Chart 1 summarizes the population characteristics of SCDPPPS offenders by supervision programs, Probation, Parole and YOA as well as offender involvement in drug testing.

The proportion of violent offenses among YOA admissions during FY 07-08 was the same at 1%, with the percentage of violent offenses for probationers and parole admissions increased by 1% over the previous year.

Overall, the most utilized level of supervision was standard (71%), followed by high (22%), intensive (4%) and sex offender (3%) for all cases.

The overall success rate for closures was 66% during the fiscal year. The overall success rate for parolees was 85%. Both probationers (66%) and YOA offenders (44%), had less successful closures rates than parolees. However, the overall rate did increase with parolees showing the largest increase.

Of the 15,887 offenders that were tested for drug use while under supervision, 6,371, or 40.1%, tested positive for drugs.

Chart 2 compares the number of admissions for each fiscal year from 1987 to 2008. Admissions increased for FY 07-08 by 4.9% from the previous fiscal year.

Chart 3 displays violent admissions by program for fiscal year 1993 to 2008. Due to the small number of Department of Juvenile Justice, early release and community release offenders for FY 07-08, they were included in parole. Probation and parolee offenders showed a slight increase in violent admissions over the previous fiscal year.

**S.C. DEPARTMENT OF
PROBATION, PAROLE AND PARDON SERVICES
POPULATION CHARACTERISTICS
CHART 1**

ADMISSIONS

<u>CATEGORY:</u>	Probation		Parole		YOA		Total	
	FY 07	FY 08	FY 07	FY 08	FY 07	FY 08	FY 07	FY 08
<u>RACE:</u>								
BLACK	51%	52%	67%	63%	72%	69%	54%	54%
WHITE	47%	45%	31%	35%	28%	31%	44%	43%
OTHER	2%	2%	2%	2%	1%	1%	2%	2%
<u>GENDER:</u>								
MALE	79%	79%	88%	90%	97%	90%	81%	81%
FEMALE	21%	21%	12%	10%	3%	10%	19%	19%
<u>OFFENSE TYPE:</u>								
VIOLENT	2%	3%	36%	37%	1%	1%	5%	6%
NON-VIOLENT	98%	97%	64%	63%	99%	99%	95%	94%

ACTIVES

<u>LEVEL OF SUPERVISION:</u>	FY 07	FY 08	FY 07	FY 08	FY 07	FY 08	FY 07	FY 08
STANDARD	71%	73%	66%	68%	55%	55%	69%	71%
HIGH RISK	25%	23%	15%	15%	21%	20%	23%	22%
INTENSIVE	2%	2%	13%	9%	22%	23%	4%	4%
SEX OFFENDER	3%	2%	6%	7%	3%	2%	3%	3%

CLOSURES

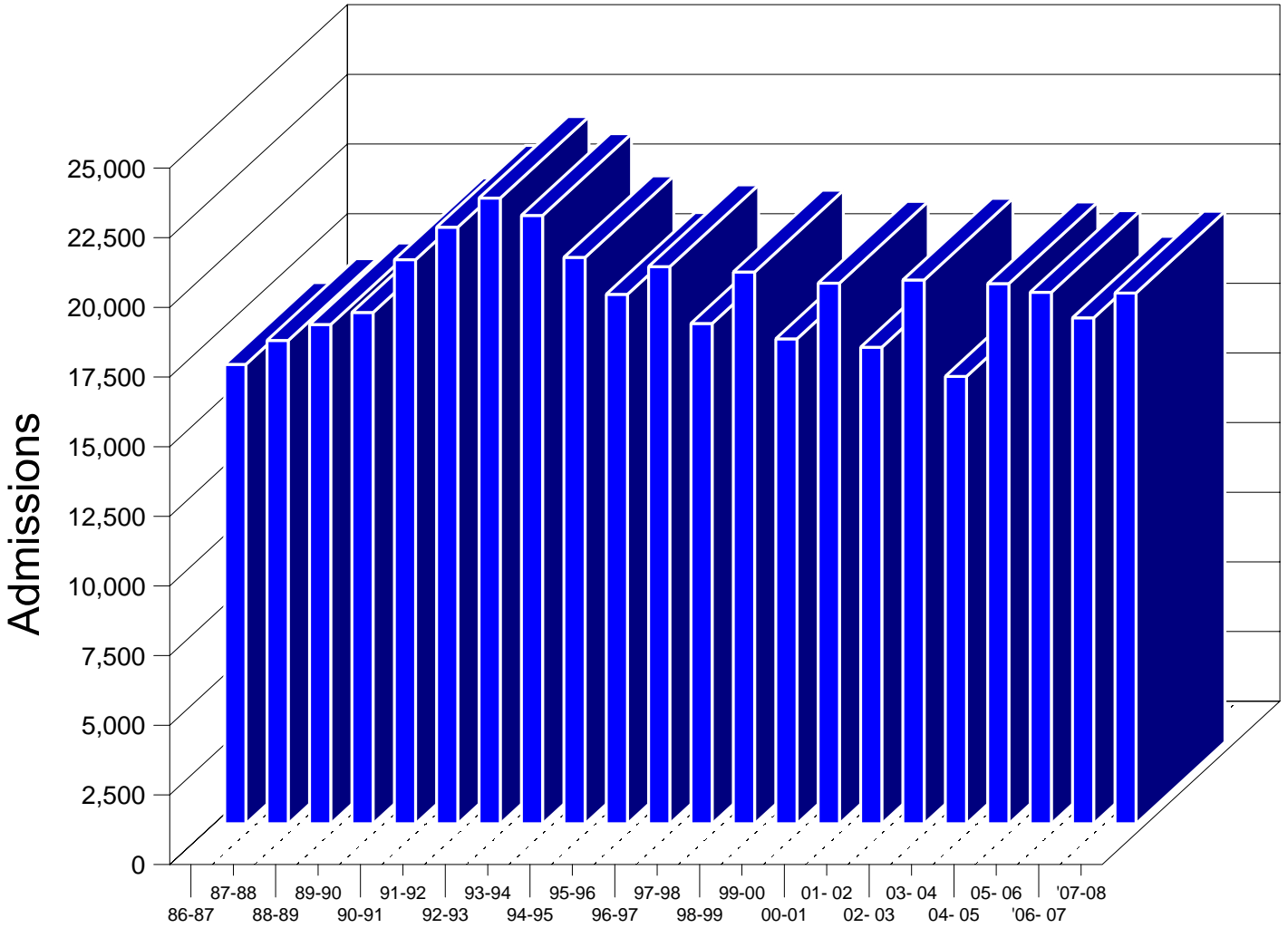
<u>CASE OUTCOME:</u>	FY 07	FY 08	FY 07	FY 08	FY 07	FY 08	FY 07	FY 08
SUCCESSFUL	65%	66%	82%	85%	45%	44%	65%	66%
UNSUCCESSFUL	35%	34%	18%	15%	55%	46%	35%	34%

DRUG TESTING

	<u>FY 07</u>	<u>FY 08</u>
INDIVIDUAL OFFENDERS TESTED	16,905	15,887
INDIVIDUALS TESTING POSITIVE	6,801	6,371
% OF INDIVIDUAL OFFENDERS TESTING POSITIVE	40.23%	40.10%
TOTAL POSITIVE TESTS	11,780	10,736
NUMBER OF TIMES OFFENDERS TESTED	26,405	25,207

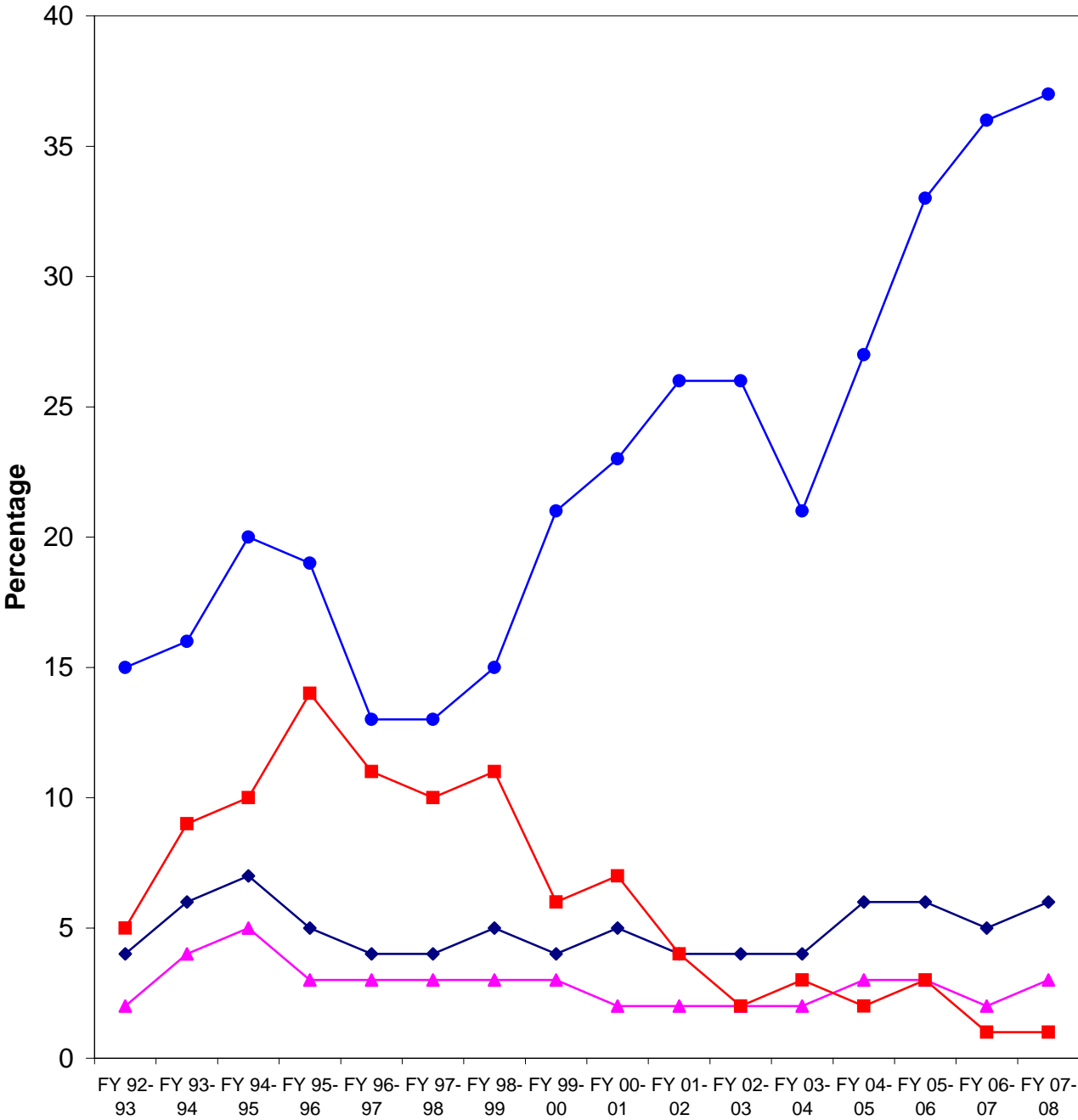
ADMISSIONS COMPARING 1987 - 2008

CHART 2



VIOLENT ADMISSIONS BY PROGRAM AND FISCAL YEAR

Chart 3



◆ ALL ADMISSIONS
 ▲ PROBATION
 ● PAROLE
 ■ YOA

Early Release included in Parole for FY 96-98, FY99- 08

S.C. DEPARTMENT OF PROBATION, PAROLE AND PARDON SERVICES

Samuel B. Glover, Director

Office of Executive Programs

Rhonda Grant - Director

Tony Dukes - Research Director

Marchar P. Stagg - Statistical & Research Analyst