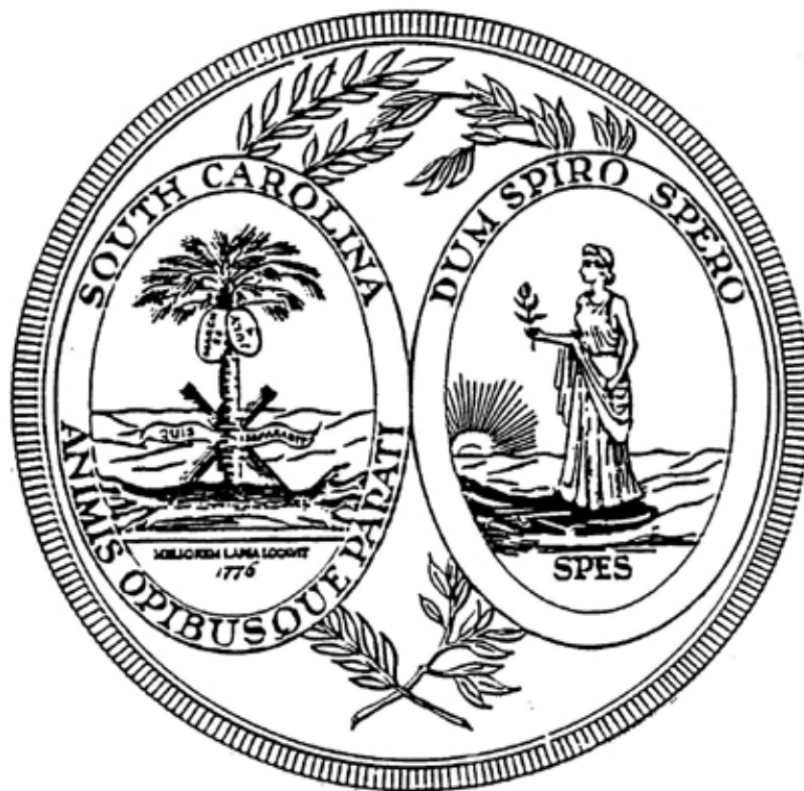


**SOUTH CAROLINA  
HIGHER EDUCATION  
TUITION GRANTS COMMISSION**



**ANNUAL REPORT  
2011-2012**

**SOUTH CAROLINA HIGHER EDUCATION  
TUITION GRANTS COMMISSION**

TO: Her Excellency, Governor Nikki Randhawa Haley,  
Chairman, State Budget and Control Board, and the  
Members of the South Carolina General Assembly

The South Carolina Higher Education Tuition Grants Commission respectfully submits for consideration its annual report. Included in this report are general data and statistics concerning the program and specific data covering the 2011-2012 award year.

Respectfully Yours,

Dr. Elizabeth Fleming  
2011-2012 Chair  
South Carolina Higher Education  
Tuition Grants Commission

# TABLE OF CONTENTS

	<u>Page</u>
South Carolina Tuition Grants - Philosophy and Purpose.....	3
Commission Members and Staff.....	4
Statutory Authority for the Commission.....	5
History of the Commission.....	5
Program Administered by the Commission.....	5
Public Service Activities and Resources.....	6
2011-2012 Statistical Summary.....	7

## **APPENDICES:**

Appendix A:	Tuition Grants Awards for 2011-2012	9
Appendix B:	Tuition Grants Recipients by County	10
Appendix C:	Tuition Grants Recipients by Ethnic Group	11
Appendix D:	Grants Awarded by Family Income Range	12
Appendix E:	History – Awards, State Funds and Total Funds	13
Appendix F:	History – Average Grants and Average Tuition & Fees	14
Appendix G:	Analysis of Program Administrative Costs	15
Appendix H:	Total Undergraduate Full-time Students	16
Appendix I:	South Carolina Full-time Students	17
Appendix J:	College Fall Headcount Enrollments (Public & Private)	18
Appendix K:	SC Tuition Grants Commission: Organizational Chart	19

# **SC HIGHER EDUCATION TUITION GRANTS PHILOSOPHY AND PURPOSE**

“Whereas, the General Assembly finds that as a result of the rising school population and the continuously rising cost of providing proper facilities for the higher education of young people, there exists in this State an urgent need to use all available educational resources wisely. A lack of higher education facilities is inimical to the welfare and prosperity of all residents of the State and to the continued financial growth of the State;

Whereas, the General Assembly also finds that within the State there exists several accredited independent institutions of higher learning whose facilities could be used effectively in the public interest by providing additional space for students thereby eliminating the need for substantial increases in capital outlay funds; and

Whereas, it is vital to the growth of the State that all qualified residents be offered the opportunity for furthering their education.

To achieve this in the most economical manner, students willing to bear the major cost of their education expenses should be assisted where financial need exists in an effort to make their educational goals more readily attainable.”

-- The Preamble to the Tuition Grants Law

**SOUTH CAROLINA HIGHER EDUCATION  
TUITION GRANTS COMMISSION  
2011-2012**

**COMMISSION MEMBERS**

Dr. Elizabeth Fleming  
Chair  
Converse College  
Spartanburg, SC

Dr. Evans Whitaker  
Vice Chair  
Anderson University  
Anderson, SC

Dr. Robert Wyatt  
Secretary  
Coker College  
Hartsville, SC

Dr. Bill Jones  
Columbia International University  
Columbia, SC

Dr. Stephen Jones  
Bob Jones University  
Greenville, SC

Dr. David Norman  
Erskine College  
Due West, SC

Dr. Henry Tisdale  
Claflin University  
Orangeburg, SC

Dr. David Swinton  
Benedict College  
Columbia, SC

Ms. Julie Carullo  
Commission on Higher Education  
Columbia, SC

**STAFF MEMBERS**

Mr. Earl L. Mayo, Jr. ....Director  
Mrs. Katherine H. Harrison.....Deputy Director  
Mrs. Jessica Bagwell.....Financial Aid Counselor  
Ms. Gena Miles.....Financial Officer

## **STATUTORY AUTHORITY FOR THE COMMISSION**

The General Assembly of the State of South Carolina, during the 1970 session, passed Act 1191 creating the Higher Education Tuition Grants Commission. This Commission was created as a State agency charged with the responsibility for overseeing the operation of the Tuition Grants Program.

## **HISTORY OF THE COMMISSION**

In 1970, the General Assembly passed a bill that created the Higher Education Tuition Grants Commission, an agency that was charged with the responsibility of administering tuition grants to independent college students. The Governor signed the bill on May 1, 1970. The original appropriation was \$5,000. No awards were made the first year. In 1971-72, the program aided 43 students. In 1972-73, a total of 134 students received awards.

The Tuition Grants Program has assisted many needy students since its inception in 1970. Since the beginning of the program, over 356,000 awards have been made.

## **PROGRAM ADMINISTERED BY THE COMMISSION**

The South Carolina Higher Education Tuition Grants Commission has been charged by the General Assembly with the responsibility of administering the Tuition Grants Program. This program allows South Carolina residents who attend participating independent colleges in this state to receive financial assistance from the state if they meet the eligibility requirements of the program.

All grant recipients must be full-time students, of good moral character, must demonstrate financial need, and must meet specified standards of academic merit.

Eligible students may apply their grants only toward tuition and fees at a South Carolina independent college that is non-profit and accredited by the Southern Association of Colleges and Secondary Schools or an independent bachelor's level institution chartered before 1962 whose major campus and headquarters are located within South Carolina. The amount of the grant may not exceed the student's financial need or the total of tuition and fees charged by the college. Also, the amount may not exceed the average annual state subsidy for the students who attend the four-year public colleges in the state.

In September and October of each year, the Tuition Grants Commission distributes information brochures to all South Carolina secondary schools and to eligible colleges. The guidance offices at the secondary schools and the financial aid offices at the colleges distribute these materials to students throughout the state.

## **2011-2012 ACADEMIC YEAR**

The Commission received 33,190 complete applications for grants for the 2011-2012 award year. The Tuition Grants Program has opened the door of educational opportunity to thousands of South Carolinians. A survey of grant recipients has indicated that, if they had not received tuition grant assistance, many of them would not have gone to college or would have enrolled in one of South Carolina's public colleges at a greater cost to the State.

### **PUBLIC SERVICE ACTIVITIES**

During the 2011-2012 year, Commission staff members participated in seven professional programs for parents and students. These financial aid information sessions were conducted throughout the State and were attended by over 500 participants. Additionally, throughout the year, the staff participated in six statewide conferences held for high school guidance counselors. Over 450 high school guidance counselors and college admissions officers attended these meetings. During October, the Commission conducted its annual training session for financial aid administrators with over 35 people in attendance. The staff also conducted on-site training workshops for colleges as needed. Executive staff presented Program information at various meetings of the South Carolina Independent Colleges and Universities, and at the annual statewide conference of the South Carolina Association of Student Financial Aid Administrators.

On January 25, 2012, the Commission's Executive Director appeared on the *Aiken Standard* television program for education, providing Tuition Grants Program information and responding to viewer questions, as well as the WAAW Radio broadcast, where he provided Tuition Grants Program information to listeners and responded to call-in questions. In addition, on January 29, 2012, the Executive Director participated in a statewide South Carolina Educational Television (SCETV) broadcast. The January broadcast was the annual SCETV program titled *Finding Money for College*. This two-hour SCETV broadcast was a live interactive telecast focusing on financial aid for postsecondary education.

The Commission's web site ([www.sctuitiongrants.com](http://www.sctuitiongrants.com)) provides students, parents, and the general public important program information, links to South Carolina's independent colleges, links to federal financial aid information, and links to necessary program documents for students and parents. Additionally, the Commission's web site provides a separate, secure section for college financial aid offices for expediting the processing of program reports. Colleges download information securely via the Internet instead of depending upon hard-copy reports or diskettes to arrive in the mail. This provides the Commission the ability to quickly disburse grant dollars to students.

### **RESOURCES**

The State Appropriation for Tuition Grants in 2011-2012.....	<b>\$21,736,438</b>
State Lottery Funds.....	<b>\$7,696,604</b>
Childrens' Education Endowment Funds.....	<b>\$3,938,115</b>
Interest from Undisbursed Funds.....	<b>\$3,923</b>
Carry Forward Funds .....	<b><u>\$1,072,837</u></b>
Total Grants Program Funding.....	<b>\$34,447,917</b>
**Total Administrative Costs for 2011-2012.....	<b>\$301,340</b>

\* **Total administrative costs were only 0.87% of the total agency appropriation.**

## 2011-2012 STATISTICAL SUMMARY

1. Students at twenty-one (**21**) independent colleges in South Carolina were eligible to participate in the Tuition Grants Program during 2011-2012. These colleges enrolled a total of **31,039** full-time undergraduate students. Nearly 66 percent (**20,448**) were South Carolina residents.
2. Over 23 percent (**23.03%**) of the 2011-2012 total award dollars went to South Carolina residents attending the five historically black colleges that participate in the program.
3. In 2011-2012, over forty-five percent (**45.16%**) of South Carolina Tuition Grants recipients were minority students. African-American students represented almost thirty-nine percent (**38.97%**) of recipients.
4. Over seventy-eight percent (**78.02%**) of SCTG recipients were dependent upon their parents/guardians for financial support. Less than twenty-two percent (**21.98%**) were totally independent and relied only on their own income or that of a spouse.
5. Over sixty-six percent (**66.36%**) of the 2011-2012 SCTG recipients had family incomes of **\$60,000 or less**. The average income for all 2011-2012 Tuition Grant recipients was \$46,292.
6. The average age for all 2011-2012 Tuition Grant recipients was **23.3 years**.
7. The 2011-2012 average private college tuition and fee charge was **\$20,506** per year, not including room, board, or books. The average South Carolina Tuition Grant award for 2011-2012 was **\$2,278** and covered **11.11%** of the average tuition and fees charge.



# **APPENDICES**

	<b><u>Page</u></b>
<b>Appendix A: Tuition Grants Awards for 2011-2012</b>	<b>9</b>
<b>Appendix B: Tuition Grants Recipients by County</b>	<b>10</b>
<b>Appendix C: Tuition Grants Recipients by Ethnic Group</b>	<b>11</b>
<b>Appendix D: Grants Awarded by Family Income Range</b>	<b>12</b>
<b>Appendix E: History – Awards, State Funds and Total Funds</b>	<b>13</b>
<b>Appendix F: History – Average Grants &amp; Average Tuition &amp; Fees</b>	<b>14</b>
<b>Appendix G: Analysis of Program Administrative Costs</b>	<b>15</b>
<b>Appendix H: Total Undergraduate Full-time Students</b>	<b>16</b>
<b>Appendix I: South Carolina Full-time Students</b>	<b>17</b>
<b>Appendix J: Fall Headcount Enrollments (Public &amp; Private)</b>	<b>18</b>
<b>Appendix K: Tuition Grants Commission: Organizational Chart</b>	<b>19</b>

# APPENDIX A

## SOUTH CAROLINA TUITION GRANTS COMMISSION

### 2011-2012 TUITION GRANTS

<u>College</u>	<u>Freshmen</u>		<u>Sophomores</u>		<u>Juniors</u>		<u>Seniors</u>		<u>Total</u>		<u>Average</u>
	<u>Number</u>	<u>Amount</u>	<u>Number</u>	<u>Amount</u>	<u>Number</u>	<u>Amount</u>	<u>Number</u>	<u>Amount</u>	<u>Number</u>	<u>Amount</u>	
Allen University	99	\$244,400	96	\$236,600	49	\$124,800	64	\$154,700	308	\$760,500	\$2,469
Anderson University	388	\$931,935	307	\$723,575	292	\$620,110	260	\$491,910	1,247	\$2,767,530	\$2,219
Benedict College	297	\$719,550	251	\$606,590	206	\$509,905	178	\$404,535	932	\$2,240,580	\$2,404
Bob Jones University	153	\$389,314	148	\$378,873	133	\$332,779	121	\$290,200	555	\$1,391,166	\$2,507
Charleston Southern	418	\$998,398	367	\$877,898	335	\$830,141	218	\$518,250	1,338	\$3,224,687	\$2,410
Claflin University	275	\$682,033	318	\$739,276	238	\$553,403	244	\$528,006	1,075	\$2,502,718	\$2,328
Coker College	155	\$353,364	224	\$447,805	189	\$396,181	163	\$305,050	731	\$1,502,400	\$2,055
Columbia College	154	\$365,300	132	\$322,340	115	\$270,900	161	\$359,110	562	\$1,317,650	\$2,345
Columbia International	54	\$132,170	66	\$166,940	42	\$101,904	50	\$104,670	212	\$505,684	\$2,385
Converse College	111	\$277,604	86	\$204,900	92	\$212,198	76	\$167,808	365	\$862,510	\$2,363
Erskine College	107	\$265,200	75	\$192,510	83	\$208,320	61	\$150,375	326	\$816,405	\$2,504
Furman University	142	\$362,320	122	\$310,700	116	\$291,925	145	\$359,030	525	\$1,323,975	\$2,522
Limestone College	114	\$221,155	281	\$348,827	297	\$376,830	212	\$190,968	904	\$1,137,780	\$1,259
Morris College	184	\$400,458	122	\$291,941	117	\$290,340	106	\$251,121	529	\$1,233,860	\$2,332
Newberry College	185	\$466,700	183	\$449,330	175	\$440,300	153	\$367,520	696	\$1,723,850	\$2,477
North Greenville	358	\$885,170	296	\$738,330	265	\$668,420	233	\$532,440	1,152	\$2,824,360	\$2,452
Presbyterian College	207	\$525,450	131	\$335,730	143	\$363,760	108	\$274,446	589	\$1,499,386	\$2,546
Southern Wesleyan	85	\$191,056	208	\$318,261	186	\$285,730	161	\$223,850	640	\$1,018,897	\$1,592
Spartanburg Methodist	393	\$911,182	215	\$517,381	6	\$13,000	3	\$7,800	617	\$1,449,363	\$2,349
Voorhees College	75	\$183,300	82	\$200,200	71	\$176,800	63	\$148,200	291	\$708,500	\$2,435
Wofford College	176	\$446,882	162	\$412,624	137	\$342,790	123	\$315,440	598	\$1,517,736	\$2,538
<b>TOTAL</b>	<b>4,130</b>	<b>\$9,952,941</b>	<b>3,872</b>	<b>\$8,820,631</b>	<b>3,287</b>	<b>\$7,410,536</b>	<b>2,903</b>	<b>\$6,145,429</b>	<b>14,192</b>	<b>\$32,329,537</b>	<b>\$2,278</b>

# APPENDIX B

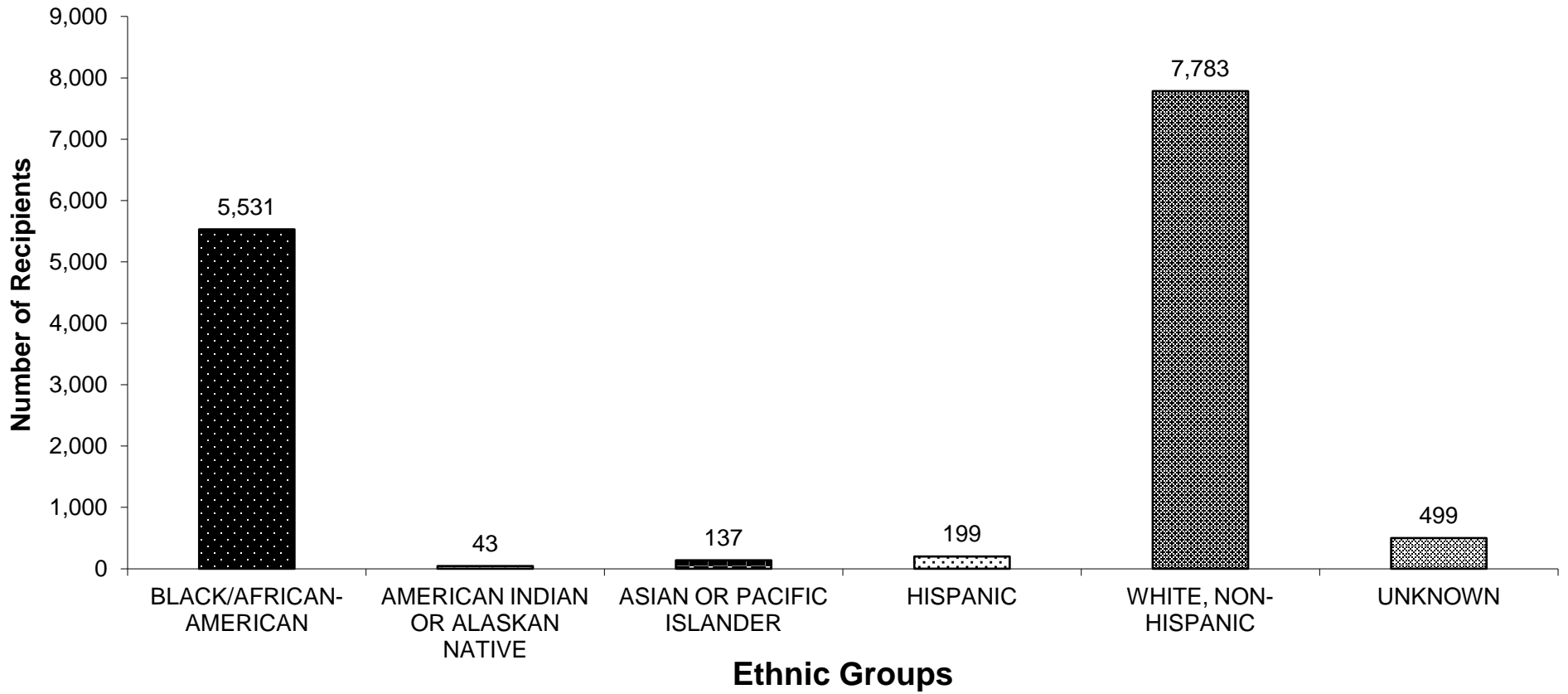
## SC TUITION GRANTS RECIPIENTS BY COUNTY

2011-2012

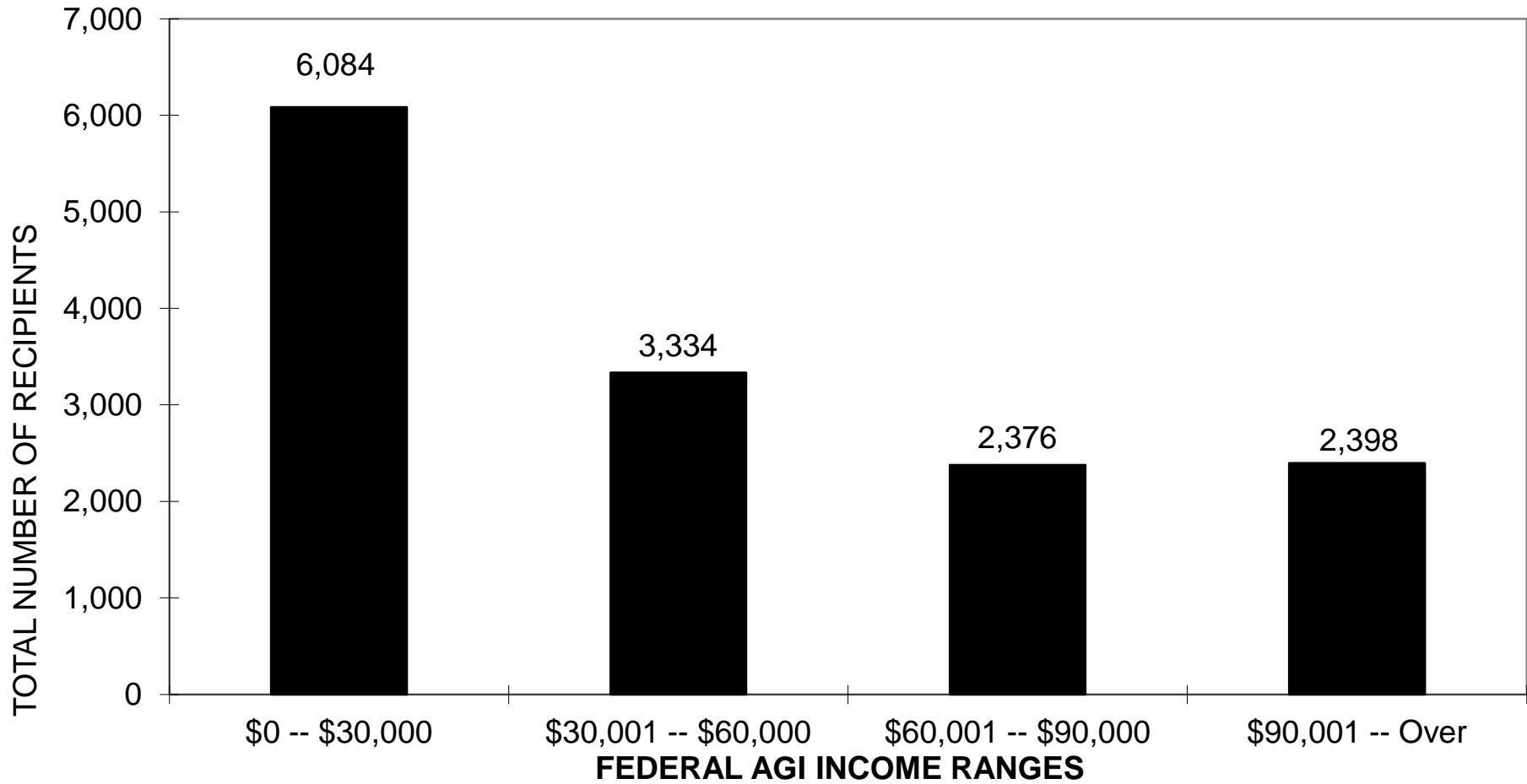
<u>COUNTY</u>	<u>RECIPIENTS</u>	<u>COUNTY</u>	<u>RECIPIENTS</u>
Abbeville	59	Greenwood	182
Aiken	306	Hampton	100
Allendale	30	Horry	271
Anderson	735	Jasper	54
Bamberg	82	Kershaw	201
Barnwell	66	Lancaster	135
Beaufort	162	Laurens	173
Berkeley	480	Lee	70
Calhoun	36	Lexington	787
Charleston	702	Marion	170
Cherokee	222	Marlboro	72
Chester	102	McCormick	19
Chesterfield	144	Newberry	175
Clarendon	141	Oconee	238
Colleton	87	Orangeburg	486
Darlington	356	Pickens	488
Dillon	108	Richland	1312
Dorchester	502	Saluda	29
Edgefield	38	Spartanburg	1194
Fairfield	77	Sumter	343
Florence	463	Union	80
Georgetown	185	Williamsburg	179
Greenville	1,881	York	461

# APPENDIX C

## SC TUITION GRANTS RECIPIENTS BY ETHNIC GROUP 2011-2012



**APPENDIX D**  
**SOUTH CAROLINA TUITION GRANTS BY INCOME**  
**2011-2012**



# APPENDIX E

## SOUTH CAROLINA TUITION GRANTS PROGRAM

### AWARDS, STATE FUND AND TOTAL FUNDS HISTORY

(EXCLUDES PROGRAM ADMINISTRATIVE APPROPRIATIONS)

<u>Year</u>	<u>State Appropriation</u>	<u>Total Funds</u>	<u>Number Of Grants</u>
1971-1972	\$50,000	\$50,000	43
1972-1973	\$150,000	\$150,000	134
1973-1974	\$4,000,000	\$4,000,000	3,271
1974-1975	\$6,180,000	\$6,398,882	5,186
1975-1976	\$7,255,473	\$7,460,840	5,784
1976-1977	\$7,332,686	\$7,833,229	7,516
1977-1978	\$8,354,749	\$9,085,707	7,758
1978-1979	\$9,356,497	\$10,133,140	9,335
1979-1980	\$9,907,590	\$10,788,633	7,634
1980-1981	\$10,834,659	\$11,700,785	8,479
1981-1982	\$12,084,659	\$12,646,350	8,368
1982-1983	\$12,184,659	\$12,375,722	7,974
1983-1984	\$11,929,149	\$12,577,824	6,974
1984-1985	\$12,929,149	\$13,749,800	7,412
1985-1986	\$14,629,149	\$15,450,804	7,635
1986-1987	\$15,592,839	\$16,379,163	7,795
1987-1988	\$15,541,444	\$16,372,303	7,608
1988-1989	\$16,189,154	\$17,825,811	7,934
1989-1990	\$17,414,241	\$18,191,460	7,242
1990-1991	\$17,414,241	\$18,054,069	6,816
1991-1992	\$16,790,153	\$16,823,103	6,694
1992-1993	\$16,004,273	\$16,583,714	6,606
1993-1994	\$15,251,517	\$16,892,826	8,371
1994-1995	\$16,346,136	\$17,358,968	8,428
1995-1996	\$17,564,872	\$19,034,623	8,950
1996-1997	\$20,783,666	\$21,727,055	9,321
1997-1998	\$22,074,929	\$22,626,641	9,412
1998-1999	\$22,307,633	\$22,582,693	9,800
1999-2000	\$23,115,329	\$23,391,633	9,908
2000-2001	\$24,479,575	\$24,937,077	10,152
2001-2002	\$22,376,550	\$22,971,182	10,864
2002-2003	\$25,650,042	\$26,487,728	11,586
2003-2004	\$25,202,599	\$25,922,255	12,004
2004-2005	\$27,391,853	\$28,277,793	12,025
2005-2006	\$27,572,932	\$28,438,045	11,869
2006-2007	\$31,457,949	\$32,160,551	11,735
2007-2008	\$37,748,012	\$38,451,537	12,461
2008-2009	\$37,783,612	\$38,474,871	12,801
2009-2010	\$34,056,274	\$34,760,500	14,200
2010-2011	\$33,993,261	\$34,827,306	14,451
2011-2012	\$33,375,080	\$33,375,080	14,192
<b>Totals</b>	<b>\$740,656,585</b>	<b>\$767,329,703</b>	<b>356,728</b>

# APPENDIX F

## SOUTH CAROLINA TUITION GRANTS PROGRAM

### AVERAGE GRANTS AND AVERAGE TUITION/FEE CHARGES

#### 1974-75 TO 2011-2012

<u>Year</u>	<u>Private Colleges Aver. Tuition/Fee Charges</u>	<u>Average SC Tuition Grant</u>	<u>% Tuition Covered By SCTG</u>	<u>Tuition Gap (Amount Not Covered)</u>
1974-75	\$1,555	\$ 1,233.00	79%	\$322
1975-76	\$1,714	\$ 1,287.00	75%	\$427
1976-77	\$1,901	\$ 1,102.00	58%	\$799
1977-78	\$2,087	\$ 1,148.00	55%	\$939
1978-79	\$2,285	\$ 1,314.00	58%	\$971
1979-80	\$2,486	\$ 1,433.00	58%	\$1,053
1980-81	\$2,765	\$ 1,280.00	46%	\$1,485
1981-82	\$3,089	\$ 1,577.00	51%	\$1,512
1982-83	\$3,403	\$ 1,665.00	49%	\$1,738
1983-84	\$3,691	\$ 1,803.00	49%	\$1,888
1984-85	\$4,099	\$ 1,852.00	45%	\$2,247
1985-86	\$4,464	\$ 1,984.00	44%	\$2,480
1986-87	\$4,706	\$ 2,097.00	45%	\$2,609
1987-88	\$5,161	\$ 2,149.00	42%	\$3,012
1988-89	\$5,607	\$ 2,240.00	40%	\$3,367
1989-90	\$6,160	\$ 2,506.00	41%	\$3,654
1990-91	\$6,583	\$ 2,626.00	40%	\$3,957
1991-92	\$7,058	\$ 2,510.00	36%	\$4,548
1992-93	\$7,406	\$ 2,529.00	34%	\$4,877
1993-94	\$7,972	\$ 2,005.00	25%	\$5,967
1994-95	\$8,440	\$ 1,982.00	24%	\$6,458
1995-96	\$8,935	\$ 2,075.00	23%	\$6,860
1996-97	\$9,467	\$ 2,309.00	24%	\$7,158
1997-98	\$9,967	\$ 2,329.00	23%	\$7,638
1998-99	\$10,561	\$ 2,329.00	22%	\$8,232
1999-2000	\$11,093	\$ 2,317.00	21%	\$8,776
2000-2001	\$11,682	\$ 2,482.00	21%	\$9,200
2001-2002	\$12,292	\$ 2,103.00	17%	\$10,189
2002-2003	\$13,022	\$ 2,255.00	17%	\$10,767
2003-2004	\$13,888	\$ 2,150.00	15%	\$11,738
2004-2005	\$14,698	\$ 2,281.00	15%	\$12,417
2005-2006	\$15,538	\$ 2,411.00	15%	\$13,127
2006-2007	\$16,611	\$ 2,648.00	16%	\$13,963
2007-2008	\$17,281	\$ 3,000.00	17%	\$14,281
2008-2009	\$18,244	\$ 3,006.00	16%	\$15,238
2009-2010	\$19,055	\$ 2,448.00	13%	\$16,607
2010-2011	\$19,391	\$ 2,356.00	12%	\$17,035
2011-2012	\$20,506	\$ 2,278.00	11%	\$18,228

# APPENDIX G

## SOUTH CAROLINA TUITION GRANTS COMMISSION *Twenty Year Analysis of Administration Costs*

YEAR	TOTAL DOLLARS	TOTAL ADMIN DOLLARS EXPENDED	ADMIN DOLLARS AS % OF TOTAL DOLLARS	TOTAL APPS PROCESSED	ADMIN COST PER APP.	TOTAL AWARDS	ADMIN COST PER AWARD
2011-2012	\$34,749,257	\$301,340	0.87%	33,190	\$9.08	14,192	\$21.23
2010-2011	\$34,827,306	\$312,785	0.89%	32,629	\$9.59	14,451	\$21.64
2009-2010	\$35,235,299	\$308,669	0.87%	31,023	\$9.95	14,200	\$21.74
2008-2009	\$37,700,369	\$318,897	0.85%	28,447	\$11.21	12,801	\$24.91
2007-2008	\$38,308,382	\$359,600	0.94%	27,206	\$13.22	12,461	\$28.86
2006-2007	\$32,778,861	\$347,621	1.06%	25,747	\$13.50	11,735	\$29.62
2005-2006	\$29,072,576	\$328,791	1.14%	26,097	\$12.60	11,869	\$27.70
2004-2005	\$28,859,988	\$320,583	1.11%	25,823	\$12.41	12,025	\$26.66
2003-2004	\$26,420,914	\$334,153	1.26%	25,419	\$13.15	12,004	\$27.84
2002-2003	\$26,944,463	\$318,359	1.18%	24,872	\$12.80	11,586	\$27.48
2001-2002	\$23,336,626	\$365,444	1.57%	23,122	\$15.81	10,870	\$33.62
2000-2001	\$25,295,026	\$357,949	1.42%	20,821	\$17.19	10,152	\$35.26
1999-2000	\$23,676,565	\$321,964	1.36%	20,185	\$15.95	9,908	\$32.50
1998-1999	\$22,898,136	\$315,443	1.38%	17,896	\$17.63	9,800	\$32.19
1997-1998	\$22,939,247	\$312,606	1.36%	17,354	\$18.01	9,412	\$33.21
1996-1997	\$21,559,158	\$274,658	1.27%	16,385	\$16.76	9,321	\$29.47
1995-1996	\$18,750,903	\$289,121	1.54%	15,671	\$18.45	8,950	\$32.30
1994-1995	\$17,573,050	\$290,817	1.65%	15,430	\$18.85	8,428	\$34.51
1993-1994	\$17,141,330	\$256,240	1.49%	12,852	\$19.94	8,371	\$30.61
1992-1993	\$16,819,992	\$244,014	1.45%	13,054	\$18.69	6,606	\$36.94



# APPENDIX H

**TOTAL UNDERGRADUATE FULL-TIME STUDENTS  
AT THE TWENTY-ONE COLLEGES PARTICIPATING  
IN THE SC TUITION GRANTS PROGRAM  
(FALL OPENING ENROLLMENT FOR THE LAST TEN YEARS)**

<u>COLLEGE</u>	<u>2002-03</u>	<u>2003-04</u>	<u>2004-05</u>	<u>2005-06</u>	<u>2006-07</u>	<u>2007-08</u>	<u>2008-09</u>	<u>2009-10</u>	<u>2010-11</u>	<u>2011-12</u>
Allen	573	544	647	617	517	640	703	804	819	639
Anderson	1224	1250	1259	1233	1178	1405	1523	1689	1902	1997
Benedict	2866	2717	2676	2491	2467	2558	2831	2934	3088	3147
Bob Jones						3664	3545	3195	3223	2966
Charleston Southern	2435	2075	1897	2213	2262	2395	2348	2377	2431	2615
Claflin	1464	1524	1662	1601	1600	1566	1606	1710	1754	1794
Coker	915	918	930	904	980	1028	956	993	966	972
Columbia	987	923	895	867	1121	984	961	964	924	875
Columbia International	573	564	539	496	430	429	440	504	514	521
Converse	567	595	623	622	639	631	617	594	559	554
Erskine	582	577	604	584	594	567	566	567	541	534
Furman	2650	2855	2682	2707	2615	2350	2614	2588	2613	2674
Limestone	1433	1588	1750	1886	2150	2047	1814	2193	2133	2273
Morris	1034	988	876	843	815	867	893	977	1071	1000
Newberry	705	716	742	821	832	900	954	1083	1116	1074
North Greenville	1417	1483	1637	1634	1690	1784	1837	1895	1926	1935
Presbyterian	1152	1144	1144	1138	1162	1128	1124	1198	1133	1143
Southern Wesleyan	1896	1819	1923	1906	1724	1714	1604	1649	1440	1412
Spartanburg Methodist	584	693	721	691	749	757	716	775	761	782
Voorhees	683	836	844	602	660	557	547	671	732	632
Wofford	<u>1069</u>	<u>1145</u>	<u>1146</u>	<u>1158</u>	<u>1228</u>	<u>1306</u>	<u>1364</u>	<u>1415</u>	<u>1468</u>	<u>1500</u>
<b>TOTAL STUDENTS</b>	<b>24809</b>	<b>24954</b>	<b>25197</b>	<b>25014</b>	<b>25413</b>	<b>29277</b>	<b>29563</b>	<b>30775</b>	<b>31114</b>	<b>31039</b>

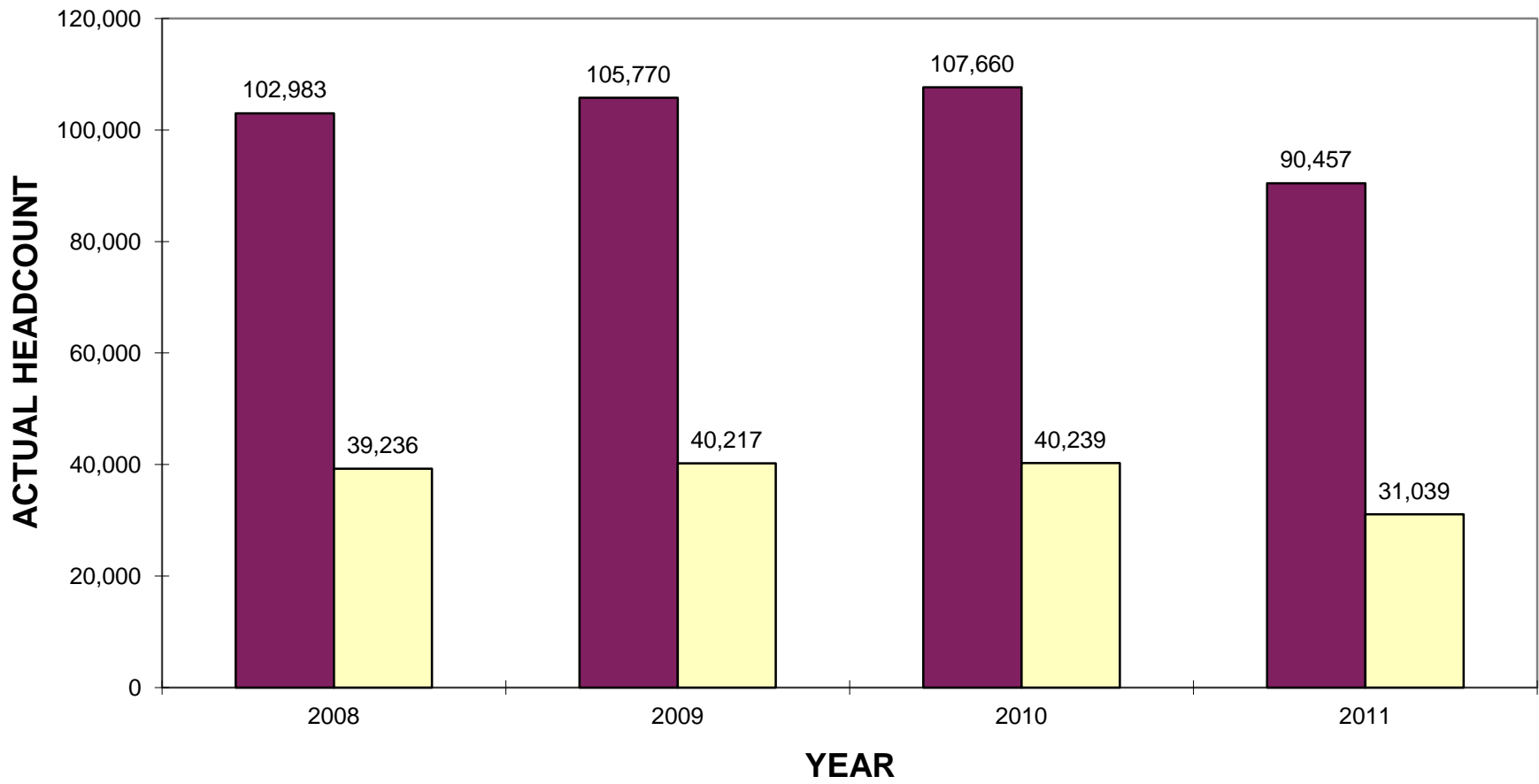
# APPENDIX I

## SOUTH CAROLINA RESIDENT FULL-TIME STUDENTS AT THE TWENTY-ONE COLLEGES PARTICIPATING IN THE SC TUITION GRANTS PROGRAM (FALL OPENING ENROLLMENT FOR THE LAST TEN YEARS)

<u>COLLEGE</u>	<u>2002-03</u>	<u>2003-04</u>	<u>2004-05</u>	<u>2005-06</u>	<u>2006-07</u>	<u>2007-08</u>	<u>2008-09</u>	<u>2009-10</u>	<u>2010-11</u>	<u>2011-12</u>
Allen	286	468	322	387	394	494	555	615	601	508
Anderson	1108	1081	1090	1062	959	1187	1271	1413	1474	1644
Benedict	2184	2025	1886	1758	1618	1516	1545	1571	1622	1632
Bob Jones						1040	1031	963	952	741
Charleston Southern	1986	1688	1486	1725	1881	1925	1897	1923	1971	2125
Claflin	1244	1342	1418	1374	1384	1309	1300	1367	1371	1396
Coker	805	818	819	771	856	896	841	861	840	825
Columbia	924	870	829	793	812	883	863	866	817	767
Columbia International	217	184	180	179	155	168	182	259	258	264
Converse	416	424	431	429	423	455	447	437	396	398
Erskine	441	427	403	371	402	413	418	421	408	384
Furman	807	814	786	796	775	707	802	826	826	803
Limestone	1161	1330	1444	1521	1774	1606	1445	1763	1714	1827
Morris	1034	838	739	708	709	749	759	820	894	838
Newberry	606	598	599	637	638	703	756	877	909	857
North Greenville	1112	1145	1275	1251	1311	1335	1164	951	1447	1454
Presbyterian	686	680	667	693	721	718	719	765	723	753
Southern Wesleyan	1629	1506	1578	1582	1437	1405	1292	1358	1170	1180
Spartanburg	526	631	656	637	695	705	655	725	730	771
Voorhees	453	614	632	416	448	382	402	474	498	387
Wofford	<u>698</u>	<u>755</u>	<u>740</u>	<u>741</u>	<u>764</u>	<u>786</u>	<u>805</u>	<u>859</u>	<u>874</u>	<u>894</u>
<b>TOTAL STUDENTS</b>	<b>18323</b>	<b>18238</b>	<b>17980</b>	<b>17831</b>	<b>18156</b>	<b>19382</b>	<b>19149</b>	<b>20114</b>	<b>20495</b>	<b>20448</b>

# APPENDIX J

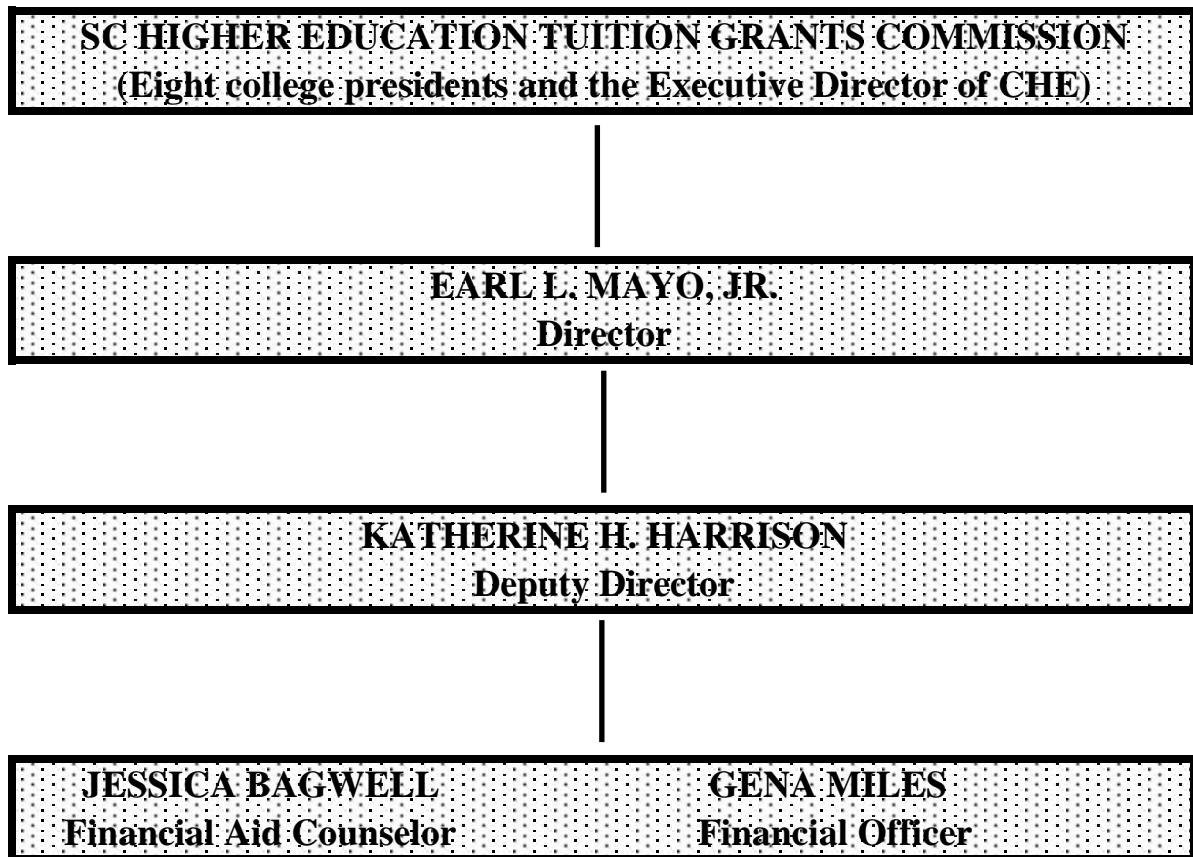
## COLLEGE FALL HEADCOUNT ENROLLMENTS PUBLIC SENIOR VS. PRIVATE SENIOR INSTITUTIONS



# APPENDIX K

## SOUTH CAROLINA HIGHER EDUCATION TUITION GRANTS COMMISSION

### ORGANIZATIONAL CHART



<b>Total Number of Documents Printed:</b>	<b>225</b>
<b>Cost Per Unit:</b>	<b>\$2.45</b>
<b>Total Printing Cost - SC Higher</b>	
<b>Education Tuition Grants Commission:</b>	<b>\$551.25</b>