

SCSL Digital Collections

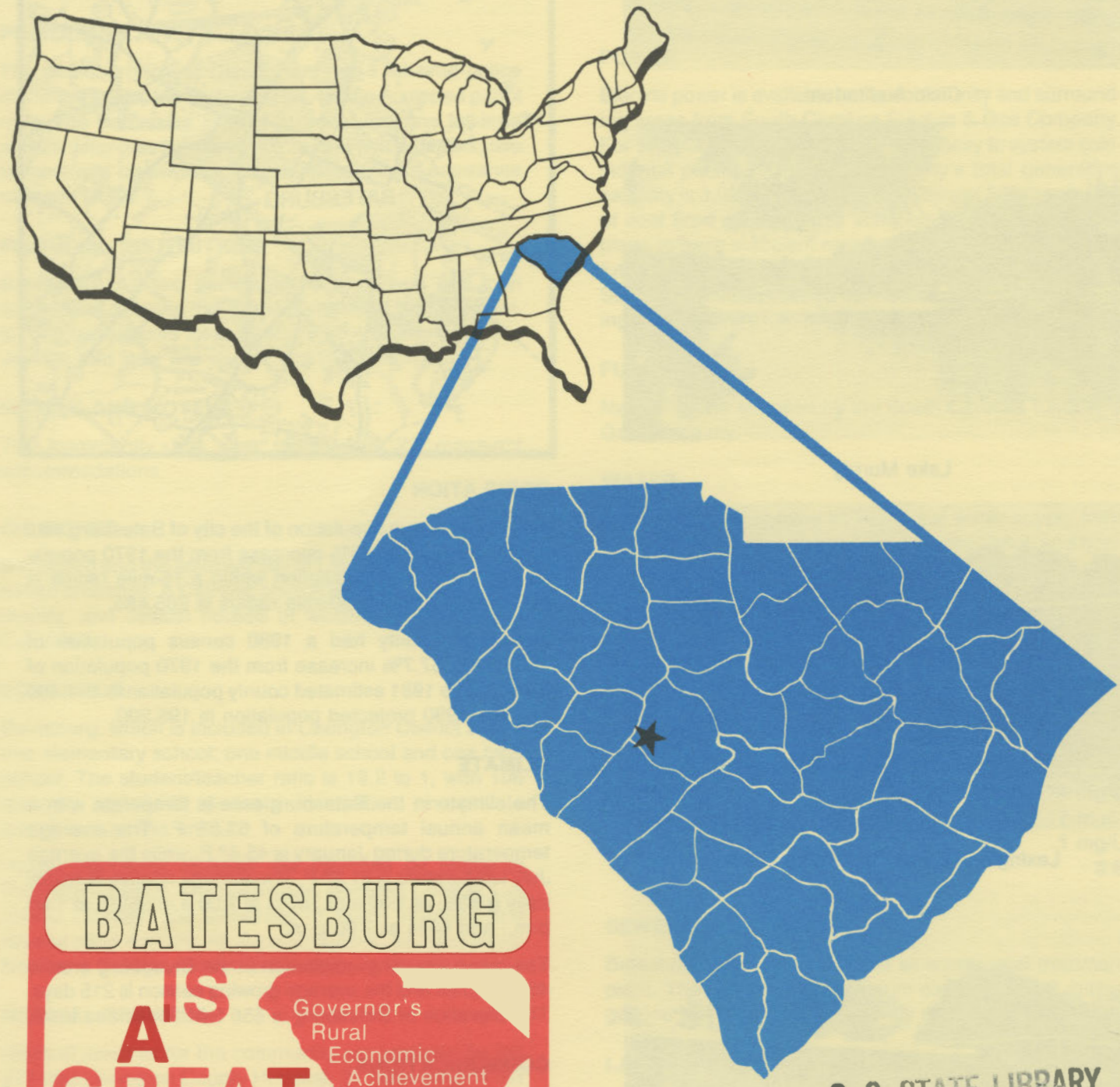
Batesburg, South Carolina

Item Type	Text
Publisher	South Carolina State Library
Rights	Copyright status undetermined. For more information contact, South Carolina State Library, 1500 Senate Street, Columbia, South Carolina 29201.
Download date	2024-10-05 09:23:59
Link to Item	http://hdl.handle.net/10827/132

D4925
2.B17

BATESBURG

south carolina



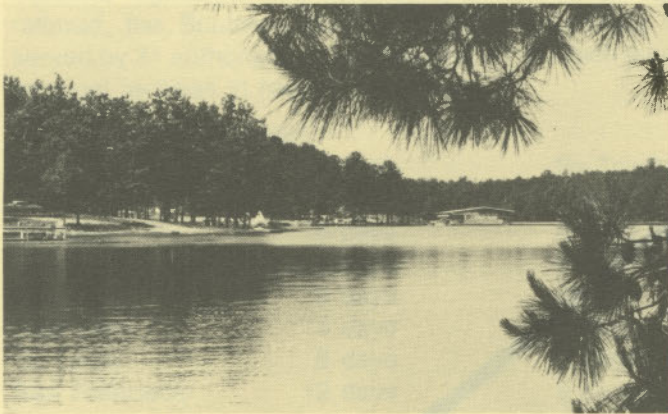
BATESBURG
IS
A GREAT TOWN

Governor's
Rural
Economic
Achievement
Trophy

S. C. STATE LIBRARY
JUN 7 1984
STATE DOCUMENTS



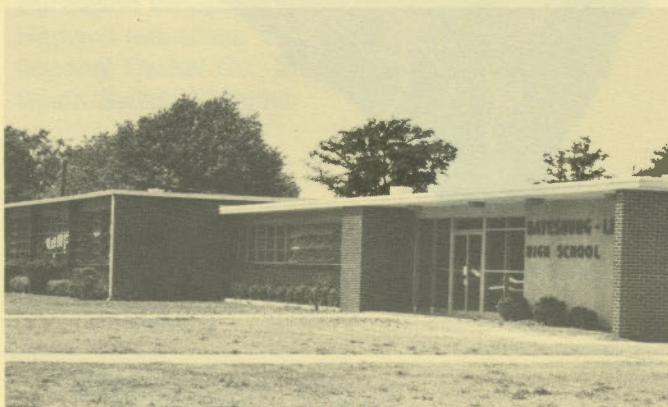
Civic Auditorium



Lake Murray



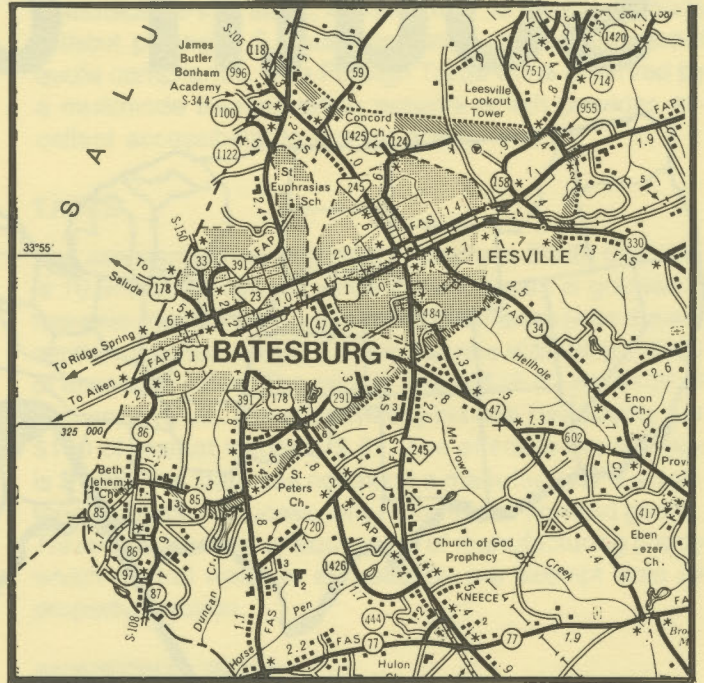
Lexington County Circulating Library



Batesburg-Leesville High School

LOCATION

As depicted on the cover, Batesburg is in the central section of the state in Lexington County. Charleston, South Carolina's busiest port, is 129 miles southeast. Columbia is 32 miles east and Greenville is 92 miles northwest. Batesburg is 210 miles east of Atlanta; 725 miles south of New York; and 2,693 miles east of San Francisco.



POPULATION

The 1980 census population of the city of Batesburg was 4,023. This was a 0.3% decrease from the 1970 population of 4,036. The population within a 15-mile radius is 50,095 and within a 30-mile radius is 265,485.

Lexington County had a 1980 census population of 140,353, a 57.7% increase from the 1970 population of 89,012. The 1981 estimated county population is 144,400 and the 1990 projected population is 195,200.

CLIMATE

The climate in the Batesburg area is temperate with a mean annual temperature of 63.5° F. The average temperature during January is 45.4° F, while the average July temperature is 81.2° F. The average relative humidity daily is 83% at 1:00 a.m.; 87% at 7:00 a.m.; 52% at 1:00 p.m.; and 65% at 7:00 p.m.

The mean annual precipitation in the Batesburg area is 46.36 inches and the average growing season is 215 days. The elevation of Batesburg is 656 feet above sea level.

COMMUNICATIONS

The weekly *Twin City News* is published in the community, and two large dailies circulate in the area. Radio Stations WBLR-AM and WKWQ-FM provide local broadcast coverage. Television reception in the community is available from seven stations, representing the three major networks and educational television. Telephone ser-

vice in the community is provided by Southern Bell of Bell South Corporation.

GOVERNMENT

The community has a mayor-council form of municipal government. The six city council members and the mayor are elected for four-year terms. Lexington County is governed locally by a nine-member county council and an administrator. The members are elected for four-year terms.

POLICE AND FIRE

The Batesburg Police Department has 8 full-time police officers. The department operates 4 radio equipped patrol cars. The Batesburg Fire Department has one full-time and 25 volunteer firemen who operate two pumpers, two tankers and one rescue vehicle. Batesburg's insurance rating is Class 7.

FINANCIAL INSTITUTIONS

Batesburg has two banks and one savings and loan association to serve the financial needs of the community. The banks have total assets of \$3.4 billion, while the savings and loan has assets of \$109 million.

HOTELS AND MOTELS

The community has one motel with 23 overnight accommodations.

CHURCHES

Batesburg and the adjacent city of Leesville have 17 Protestant churches. A Catholic church is located in the community, and Jewish houses of worship are located in Columbia.

EDUCATION

Batesburg, which is included in Lexington District 3, has one elementary school; one middle school and one high school. The student/teacher ratio is 19.2 to 1, with 106 teachers and 2,036 students. In addition, one private school serves the area.

Higher education facilities are provided by Midlands Technical College, Allen University, Benedict College, Columbia College, the University of South Carolina and several other schools. All are in Columbia, 32 miles away. Newberry College, located in Newberry, is 31 miles away.

MEDICAL SERVICES

Medical services for the community are provided by the 272-bed Lexington County Hospital, 27 miles away. Four general hospitals, the State Mental Hospital, a Veterans Administration Hospital and an Army Hospital are located in Columbia, 32 miles away. Four privately-practicing medical doctors and three privately-practicing dentists serve Batesburg and the adjacent city of Leesville. An emergency medical center is located in Leesville.

RECREATION AND CIVIC FACILITIES

Recreation facilities in the community consist of a 16-acre recreation park with two public ball fields. The Ponderosa Country Club has an 18-hole championship golf course, swimming pool and clubhouse. Nearby Lake Murray provides areas for fishing, boating, sailing, swimming, water skiing and camping. Several riding stables are located in the area. The 1,200-seat Civic Auditorium is used for civic programs. Nearby Columbia, the state capital, provides additional sources of recreation and entertainment.

POWER

Electric power is available to the community and surrounding areas from South Carolina Electric & Gas Company. For 1984 SCE&G projects reserve capacity to system coincidental peak of 32%. The company's total generating capacity is 3,959 megawatts. An additional 550 megawatts of coal fired generation is scheduled for 1989. SCE&G plans to have sufficient reserves to meet immediate and future electrical needs of its service area. In addition SCE&G maintains inter-tie connections with four neighboring utilities.

FUELS

Natural gas is supplied by the South Carolina Electric & Gas Company.

WATER

The community obtains its municipal water supply from a 23-acre raw water reservoir on Duncan Creek and from Lightwood Knot Creek. The filter plant is capable of supplying water at a maximum rate of 2,100,000 gallons per day, with an average daily demand of 700,000 gallons. Treated water storage consists of 175,000 gallons in elevated storage and 600,000 gallons in ground storage.

Analysis of water supplied in the community:

Total solids	66 mg/L
Alkalinity	18 mg/L
Calcium	4 mg/L
Hardness	17 mg/L
Iron	.1 mg/L
pH	8.8

SEWER

Batesburg utilizes an extended air wastewater treatment plant. The plant has a maximum capacity of 1.3 million gallons per day, and is currently running at capacity.

LABOR

Because labor information may change in this area, a current labor availability report prepared and kept up to date by the S.C. State Development Board will be furnished to prospective manufacturers at their request. The comprehensive report will include sources of recruitable labor, labor force characteristics, work force skill levels, earn-

ings data and other pertinent information. The S.C. State Board for Technical and Comprehensive Education has the resources to recruit and train workers in accordance with a company's entry criteria. This training is at little or no cost to the employer. A lead time schedule is developed to coordinate recruiting, testing, selecting, and training. This assures that persons will be able to move from training to their respective jobs at the time the plant is ready for initial production.

TRANSPORTATION

Batesburg is served by one interstate highway, I-20 (9 miles), two United States highways, and two South Carolina highways. The community is served by one railroad, the Southern Railway System. Batesburg is served by 31 authorized motor carriers, 21 of which have terminal facilities in nearby Columbia.

Freight Delivery Times:

To:	By Rail:	By Truck:
Atlanta	3 days	1 day
Boston	6 days	4 days
Chicago	6 days	3 days
Houston	9 days	3 days
New York	4 days	3 days
St. Louis	6 days	2 days
San Francisco	12 days	5 days

The Columbia Metropolitan Airport, 25 miles from the community, offers regularly scheduled commercial airline service on Delta, Eastern, Piedmont, United and Bankair. Private aircraft also utilize the Columbia Metropolitan Airport, which has paved and lighted runways of 7,551 feet and 5,001 feet. Services available at Columbia Metropolitan are flight instruction, aircraft rentals, charter and air taxi service, 100LL and Jet A fuel, major airframe

and major powerplant repairs, RBn, and Unicom. Columbia Metropolitan has a modern air freight terminal.

FOREIGN TRADE ZONE

A Foreign Trade Zone is located in Summerville, South Carolina, 25 miles from the Port of Charleston and 104 miles from the community. The Foreign Trade Zone allows manufacturers to store, manufacture, or process goods without paying U.S. Customs duties or worrying about quota compliance. This Foreign Trade Zone is served by a multimode transportation network which provides excellent accessibility to market areas.

TAXES

The assessment on industrial property in South Carolina is 10.5% of the market value. New industry is granted a five-year moratorium on general county taxes (with the exception of school taxes). The city tax rate is \$5.80 per \$100 of assessed value. The county rate is \$18.60 per \$100 of assessed value. The effective city tax rate (tax liability per \$100 of market value) is \$.61. The effective county rate is \$1.95. The state has no tax on a manufacturer's inventories, goods-in-process, raw materials or finished goods. Treatment facilities or equipment of manufacturing plants which control water or air pollution are exempt from all property taxation.

INDUSTRIAL SITES

Industrial sites are available in Batesburg with a wide range of geographic and topographic features. In all probability, a site that will meet the needs of most industries' requirements has been identified, catalogued, and entered into the State Development Board's Computerized Site Selection System. Detailed site information will be furnished upon request.

MAJOR EMPLOYERS

Name	Product or Service	Employees
Burlington Industries, Inc.	Mattress ticking	570
Hartwell Industries, Inc.	Narrow fabrics	175
Imperial Casket Co., Inc.	Metal caskets	84
Union Switch & Signal	Electronic products assembly	274

For Additional Information Contact:

SOUTH CAROLINA STATE DEVELOPMENT BOARD
 P. O. Box 927, Columbia, South Carolina 29202
 (803) 758-3145

