

Crime in South Carolina 2007

South Carolina Law Enforcement Division

(taken from the website 4/7/2010)

Contents

Arrests

Arrest by County

Index Crime by County and Agency 2005-2007

Index Crime Trends 1998-2007

Non-Violent Crime Trends 1998-2007

Violent Crime Trends 1998-2007

Jurisdiction (2007 Data)	South Carolina
Offense Type	South Carolina
All Offense Types	229,012
Murder and Nonnegligent Homicide	347
Manslaughter by Negligence	9
Rape by Force	506
Robbery	2,019
Aggravated Assault	9,047
Burglary/Breaking and Entering	6,097
Motor Vehicle Theft	1,234
Larceny-theft	20,192
Arson	192
Forcible Sodomy	97
Sexual Assault With An Object	74
Forcible Fondling	406
Kidnaping/Abduction	129
Drug Violations	34,008
Drug Equipment Violations	3,714
Weapon Law Violations	3,235
Sexual Expose	238
Incest	8
Statutory Rape	168
Simple Assault	21,962
Intimidation	2,190
Vandalism	4,440
Harassing Telephone Calls	1,121
Extortion/Blackmail	15
Embezzlement	616
Forgery and Counterfeiting	2,865
Fraud	3,684
Bribery	1
Stolen Property Offenses	2,437
Prostitution	646
Assisting or Promoting Prostitution	35
Gambling	213
Pornography/Obscene Material	40
Suicide	4
Using Motor Vehicle Without Consent	433
Driving Under Influence	11,700
Peeping Tom	40
Trespass of Real Property	6,543
Bad Checks	14,507
Liquor Laws	12,199
Drunkenness	11,700
Disorderly Conduct	15,299
Offenses against Family and Children	1,628
Contributing to Delinquency of Minor	272
Resisting Arrest	1,082
All Other Criminal Violations	29,447
Curfew/Loitering/Vagrancy	1,419
Runaway	539
Incorrigible Child	157
Truancy	14

Jurisdiction (2007 Data)	Florence	Georgetown	Greenville	Greenwood	Hampton	Horry	Jasper	Kershaw	Lancaster	Laurens	Lee	Lexington	McCormick	Marion	Marlboro	Newberry	Oconee	Orangeburg	Pickens	Richland
Offense Type																				
All Offense Types	7,469	3,124	28,170	5,076	689	26,049	1,177	2,700	3,385	2,728	622	7,662	216	1,744	1,390	5,094	3,137	3,545	5,217	15,182
Murder and Nonnegligent Homicide	20	7	22	8	2	17	1	6	4	13	1	7		5	2	3		9	1	47
Manslaughter by Negligence				1																1
Rape by Force	18	9	43	9		42	2	6	9	10	1	20		4	3	7	5	8	14	29
Robbery	57	35	282	33	12	166	11	10	40	33		47	3	17	8	29	8	42	21	199
Aggravated Assault	252	177	967	257	36	749	29	88	115	159	30	206	15	84	95	59	81	119	144	626
Burglary/Breaking and Entering	201	109	671	147	21	359	19	73	152	182	22	167	1	62	74	71	52	127	169	399
Motor Vehicle Theft	31	17	140	21	7	116	5	16	15	46	7	41	1	11	7	12	18	25	17	51
Larceny-theft	742	296	2,368	387	33	2,348	56	218	284	214	52	593	11	119	144	204	209	346	439	1,239
Arson	5		23	15		9	2	3	2	2	3		2	5	3		3	2	7	3
Forcible Sodomy	3	3	26	2		1	1	1	1			2				1	1		1	7
Sexual Assault With An Object	1	1	11			2		1	1			3					2	1		3
Forcible Fondling	9	6	39	9		19		1	10	4	1	9		3	2	5	3	7	31	31
Kidnaping/Abduction	2	4	17	2		3	2	1	2		1	11			1			1	7	6
Drug Violations	1,501	385	2,754	623	169	2,373	227	338	455	428	84	1,454	31	303	206	414	340	556	492	3,085
Drug Equipment Violations	41	63	816	4	13	226	6	24	21	11	1	206		2	10	56	20	13	77	14
Weapon Law Violations	148	38	288	33	13	270	9	21	75	40	14	70	2	35	33	32	29	53	50	414
Sexual Expose	2	7	40	3		6		3	3	6	1	5		3	1		2	3	6	19
Incest										1	1									3
Statutory Rape	3	5	9	3		5			3	11	1	2		1	1	8	1	2	7	11
Simple Assault	574	581	2,054	599	55	2,275	132	139	475	332	60	847	29	221	93	239	249	453	472	1,141
Intimidation	73	89	217	41	7	300	3	11	45	19	3	30		46	11	18	22	36	12	66
Vandalism	102	73	548	102	8	427	19	44	129	72	8	103	9	47	20	97	60	130	146	263
Harassing Telephone Calls	15	47	189	77		21	3	22	33	18	3	19		14	1	7	28	13	97	55
Extortion/Blackmail			1																	1
Embezzlement	21	6	42	1	1	62		1	13	9		19					13	20	3	47
Forgery and Counterfeiting	131	24	311	246	1	136	14	45	38	64	16	26	5	12	7	25	37	103	100	124
Fraud	127	43	553	118	2	352	19	44	47	62	3	46	3	14	8	65	92	25	116	449
Bribery																				1
Stolen Property Offenses	77	31	360	17	5	328	16	27	42	12	2	39		20	4	4	21	33	35	149
Prostitution	6	2	70	25		74	5	2	3	2		1					7			58
Assisting or Promoting Prostitution			4	1		1						5					2			3
Gambling	3	1	78	1					6	3		11						2	1	7
Pornography/Obscene Material			2			2		2				1							2	1
Suicide												1			1					1
Using Motor Vehicle Without Consent	10	10	46	7	1	11	1	3	6	1	3	5		1		1	5	10	20	45
Driving Under Influence	227	165	1,191	197	45	817	107	327	173	83	38	562	12	40	70	165	213	224	475	614
Peeping Tom	4		6		1	2			1			2				2		1		1
Trespass of Real Property	351	63	385	93	21	1,173	42	54	89	78	6	157	6	38	57	70	43	108	85	405
Bad Checks		163	2,259	832		1,602	30	111	190		6	392	1		20	194	863	10	595	1,918
Liquor Laws	315	173	778	257	70	2,137	127	193	270	90	23	510	19	97	49	232	168	139	292	532
Drunkenness	499	72	562	382	18	3,109	50	169	70	132	1	453	2	105	98	175	106	10	397	1,155
Disorderly Conduct	734	239	1,309	124	70	1,852	70	267	377	289	41	630	21	204	124	323	273	233	317	792
Offenses against Family and Children	3	1	130	7		296	21	4	1	7	2	21		1		5	2	20	10	14
Contributing to Delinquency of Minor	9	3	58	1	2	2		13	8	4		8	1	3		1	5	5	3	1
Resisting Arrest	50	25	62	27	1	224	2	26	24	13		26	1	9	10	29	10	5	5	81
All Other Criminal Violations	1,084	150	8,082	324	72	3,403	141	384	153	249	186	777	40	217	227	2,538	130	633	548	879
Curfew/Loitering/Vagrancy	14		335		1	666	1	1		7		13					5	17		134
Runaway	2	1	14	4		65	4			15		114				3	6		1	51
Incorrigible Child	2			36	2	1				7	1		1	1			3			5
Truancy			7									1						1		

Jurisdiction (2007 Data)						
Offense Type	Saluda	Spartanburg	Sumter	Union	Williamsburg	York
All Offense Types	846	11,192	3,059	2,005	1,014	10,381
Murder and Nonnegligent Homicide	1	25	6	1	5	6
Manslaughter by Negligence		1			1	1
Rape by Force	5	21	7		10	26
Robbery	5	127	36	8	8	83
Aggravated Assault	27	479	315	115	48	571
Burglary/Breaking and Entering	12	495	113	61	50	319
Motor Vehicle Theft	4	72	23	3	10	84
Larceny-theft	34	1,143	616	139	90	768
Arson	2	10	1	3	3	4
Forcible Sodomy		2	1		1	
Sexual Assault With An Object		1	1	2		
Forcible Fondling		18	6	4	5	38
Kidnaping/Abduction		11	1	1	2	10
Drug Violations	135	1,459	486	306	145	2,142
Drug Equipment Violations	4	427	52	11	4	39
Weapon Law Violations	2	135	63	24	14	152
Sexual Expose	2	10		1	2	13
Incest						1
Statutory Rape	1	16	2	2	5	3
Simple Assault	47	1,295	224	121	102	1,136
Intimidation	2	62	55	22	13	179
Vandalism	11	225	59	50	27	246
Harassing Telephone Calls	11	42	24	19	1	32
Extortion/Blackmail		2		1		
Embezzlement		21	10	12		62
Forgery and Counterfeiting	26	93	80	27	6	107
Fraud	8	182	62	21	12	137
Bribery						
Stolen Property Offenses	3	145	47	3	7	112
Prostitution		22	2	1		
Assisting or Promoting Prostitution		13				
Gambling		23	5	3	1	5
Pornography/Obscene Material	2		2			1
Suicide						
Using Motor Vehicle Without Consent		90	8	6	3	32
Driving Under Influence	111	562	237	69	92	767
Peeping Tom		1				3
Trespass of Real Property	5	505	27	69	10	304
Bad Checks	3	806	2	297		289
Liquor Laws	66	428	88	68	82	929
Drunkenness	25	291	95	121	30	537
Disorderly Conduct	63	683	187	218	46	586
Offenses against Family and Children	33	41		10		23
Contributing to Delinquency of Minor	1	14	4	4		20
Resisting Arrest	4	19	4	8	11	75
All Other Criminal Violations	189	1,133	103	172	162	520
Curfew/Loitering/Vagrancy	1	22			5	13
Runaway	1		3	2		3
Incorrigible Child		20				2
Truancy						

Index Crime by County and Agency 2005-2007

Return A Offense	Murder			Rape			Robbery			Aggravated Assault			Burglary			Larceny			Motor Vehicle Theft		
Incident Date	2005	2006	2007	2005	2006	2007	2005	2006	2007	2005	2006	2007	2005	2006	2007	2005	2006	2007	2005	2006	2007
Jurisdiction	2005	2006	2007	2005	2006	2007	2005	2006	2007	2005	2006	2007	2005	2006	2007	2005	2006	2007	2005	2006	2007
South Carolina	305	360	355	1862	1842	1702	5641	5936	6306	24756	25271	26127	42640	43163	45388	126358	124875	126265	16567	16825	17061
ABBEVILLE County	2	3	1	7	7	4	6	8	4	157	177	159	140	173	177	434	471	425	20	42	29
ABBEVILLE SO				3	1	1	3	2	1	47	42	61	83	93	93	200	201	213	7	22	20
ABBEVILLE PD		3	1	3	5	1	3	6	2	98	127	89	36	65	67	164	200	129	6	19	8
CALHOUN FALLS PD	1			1	1	2			1	9	8	7	19	12	15	55	55	69	6	1	
DUE WEST PD	1									3		2		3	2	8	14	13	1		1
ERSKINE COLLEGE PD													2			7	1	1			
AIKEN County	9	10	9	69	62	74	97	131	144	321	391	460	1138	1308	1428	3316	3645	3646	509	550	608
AIKEN SO	7	7	7	57	49	50	57	73	89	208	242	293	782	923	1034	1551	1842	1729	350	366	415
AIKEN PD	1	1	2	6	8	13	23	31	26	78	108	119	196	205	228	1107	958	989	62	83	70
NORTH AUGUSTA PD	1	2		3	4	7	15	24	26	15	19	21	103	122	111	503	674	746	61	94	100
BURNETTOWN PD				1		1				5		7	8	9	2	17	10	15	8	2	1
JACKSON PD					1	1	2			5	9	4	20	21	20	23	21	30	12		7
NEW ELLENTON PD				1		1		3	3	7	9	6	20	12	24	48	56	41	9	2	9
SALLEY PD											1	1			3	2	1	6			1
WAGENER PD						1				2	3	8	8	14	5	18	17	22	6	3	4
SAVANNAH RIVER PLANT PD																32	37	35			
AIKEN TECH COLLEGE PD										1						3	14				
USC AIKEN PD				1								1	1	2	1	12	14	32	1		1
AIKEN ABC PD																		1			
S.C. FORESTRY COMM. PD																	1				
ALLENDALE County	1	3	2	1	3	3	6	13	12	84	81	104	132	144	107	178	164	144	14	13	15
ALLENDALE SO	1	1		1			1	1	2	15	15	13	35	25	19	19	47	44	3	3	7
ALLENDALE PD		2	1		3		5	10	6	58	46	80	86	97	73	149	107	83	10	6	6
FAIRFAX PD			1			3		2	4	11	20	11	11	22	15	10	10	17	1	4	2
ANDERSON County	15	18	5	72	95	63	157	161	140	839	893	971	2007	1933	2585	5843	5447	5855	810	777	895
ANDERSON SO	12	13	4	54	66	46	115	110	76	629	616	691	1608	1492	2090	4176	3827	4266	613	596	713
ANDERSON PD	2	4	1	9	24	15	32	42	44	119	198	219	255	333	371	1122	1159	1174	133	143	132
BELTON PD		1		4	3		1	1	4	14	13	12	44	36	28	154	152	138	22	13	19
HONEA PATH PD				1	1	2	4	1	3	48	31	34	43	35	69	141	166	150	12	10	17
PENDLETON PD							1	1		12	14		27	12		98	33		7	3	
WILLIAMSTON PD				3			3	3	12	13	16	13	17	14	23	111	88	105	15	9	9
IVA PD							1			1	1		8	8	1	21	7	12	3	1	
WEST PELZER PD	1			1	1			3	1	3	3	1	5	3	3	20	15	6	5	2	
ANDERSON PATROL PD											1	1						4			5
BAMBERG County	2	4	1	9	5	4	10	10	12	112	89	80	164	211	212	285	256	307	44	52	51
BAMBERG SO	1	4		5	3	2	4	2	4	59	37	47	72	83	143	95	93	124	33	35	39
BAMBERG PD				1	1	1	2	1	3	17	20	15	32	33	36	95	84	124	3	7	8
DENMARK PD	1		1	3	1	1	4	7	5	32	24	17	55	88	32	78	66	59	6	9	3
EHRHARDT PD										2		1	4	5	1	16	11		1	1	1
DENMARK TECH COLLEGE PD										2	8		1	2		1	2		1		

Return A Offense		Murder			Rape			Robbery			Aggravated Assault			Burglary			Larceny			Motor Vehicle Theft		
Incident Date		2005	2006	2007	2005	2006	2007	2005	2006	2007	2005	2006	2007	2005	2006	2007	2005	2006	2007	2005	2006	2007
Jurisdiction		2005	2006	2007	2005	2006	2007	2005	2006	2007	2005	2006	2007	2005	2006	2007	2005	2006	2007	2005	2006	2007
BARNWELL	County	2	1	3	9	3	4	12	18	15	170	155	158	170	225	270	582	614	597	35	25	36
BARNWELL	SO	1	1	2	3	1	2	5	4	3	106	94	88	80	105	116	220	212	236	21	12	27
BARNWELL	PD				3	1	2	4	7	4	55	33	48	56	78	89	211	276	225	9	7	7
WILLISTON	PD	1		1	3	1		2	3	4	5	14	13	23	24	44	115	102	100	5	4	2
BLACKVILLE	PD							1	4	4	4	14	9	11	18	21	36	22	36		2	
S.C. FORESTRY COMM.	PD																	2				
BEAUFORT	County	5	7	8	46	50	26	212	179	183	628	743	681	1324	1391	1241	3643	3752	3800	370	342	339
BEAUFORT	SO	5	6	7	31	36	22	149	128	128	466	580	515	1060	1081	1016	2776	2721	2637	289	270	271
BEAUFORT	PD		1		14	10	3	50	34	35	124	109	110	180	186	141	560	593	675	48	43	42
BLUFFTON	PD				1	3		4	7	10	13	37	48	35	80	53	108	222	280	10	21	17
PORT ROYAL	PD			1		1	1	9	10	10	25	17	8	49	44	31	199	216	208	23	8	9
BERKELEY	County	9	18	11	71	67	43	169	202	157	627	636	593	1333	1434	1319	3082	3183	3414	662	652	584
BERKELEY	SO	8	15	7	54	39	34	93	131	91	477	474	445	1017	1013	956	1762	1830	1921	472	428	428
MONCKS CORNER	PD				3	4	4	10	9	10	35	29	27	43	34	59	262	247	272	54	31	33
BONNEAU	PD							1			1	1	2	4		1	8	9	8		2	2
GOOSE CREEK	PD	1			6	9	1	19	32	26	53	72	58	125	210	150	580	624	716	58	94	53
JAMESTOWN	PD														1	3	5	4	1			
ST. STEPHEN	PD		1		2	3	1	9	2	2	10	6	5	30	18	20	61	55	62	8	7	9
HANAHAN	PD		2	4	6	12	3	37	28	28	51	53	55	114	158	130	403	413	434	69	88	59
S.C. FORESTRY COMM.	PD																	1				
BERKELEY PATROL	PD											1	1				1			1	2	
CALHOUN	County				3	2	2	3	4	13	78	50	104	81	72	89	216	237	241	51	36	54
CALHOUN	SO				3	1	1	2	2	12	46	22	72	61	59	71	139	158	178	46	34	47
ST. MATTHEWS	PD					1	1	1	2	1	32	28	32	20	13	18	77	78	63	5	2	7
S.C. FORESTRY COMM.	PD																	1				

Return A Offense		Murder			Rape			Robbery			Aggravated Assault			Burglary			Larceny			Motor Vehicle Theft		
Incident Date		2005	2006	2007	2005	2006	2007	2005	2006	2007	2005	2006	2007	2005	2006	2007	2005	2006	2007	2005	2006	2007
Jurisdiction		2005	2006	2007	2005	2006	2007	2005	2006	2007	2005	2006	2007	2005	2006	2007	2005	2006	2007	2005	2006	2007
FLORENCE	County	13	10	12	57	48	55	352	287	227	943	967	1002	1791	1387	1642	5351	5495	4759	537	589	561
FLORENCE	SO	8	4	5	26	23	18	112	101	86	466	457	484	940	717	828	1984	2146	2001	265	316	333
FLORENCE	PD	5	4	5	18	18	26	202	155	117	335	356	400	594	462	584	2608	2548	2008	218	223	175
LAKE CITY	PD		1	2	11	3	8	29	18	15	81	111	69	154	115	127	486	592	515	40	37	35
COWARD	PD											1		1	6	2	6	4	3			2
JOHNSONVILLE	PD				1			3	3		13	1	4	4	14	11	48	54	70		2	3
PAMPLICO	PD				1			2	3	1	14	6	5	15	21	15	19	28	11	1	2	3
SCRANTON	PD								2					2	2	1	25	11	3			
TIMMONSVILLE	PD		1			3	3	4	4	8	33	33	38	77	39	64	121	70	104	10	8	9
FRANCIS MARION UNIV.	PD					1			1		1	2	2	4	11	10	52	40	43	3	1	1
S.C. FORESTRY COMM.	PD																2	2	1			
GEORGETOWN	County	1	5	6	24	16	24	48	37	45	283	318	342	472	506	470	1380	1578	1784	157	147	168
GEORGETOWN	SO	1	1	3	21	10	14	29	21	26	153	170	187	341	351	359	789	917	1068	117	109	127
ANDREWS	PD		1	1	1	1	4	1	3	2	32	20	32	36	26	32	141	123	140	18	11	9
GEORGETOWN	PD		3	2	2	5	6	18	13	17	98	128	123	93	113	79	434	521	563	22	26	30
PAWLEYS ISLAND	PD													2	16		16	16	13		1	1
S.C. FORESTRY COMM.	PD																	1				
GEORGETOWN PATROL	PD																					1
GREENVILLE	County	30	24	30	184	147	151	635	630	761	2427	2367	2357	4279	4596	4529	11485	11011	11617	1644	1784	1822
GREENVILLE	SO	22	15	20	135	102	108	415	441	516	1736	1704	1591	3104	3456	3462	6939	6604	6800	1154	1247	1263
FOUNTAIN INN	PD		1		2	1	2	3	1	11	25	30	33	51	37	29	117	163	141	24	11	9
GREENVILLE	PD	5	8	8	32	23	23	161	141	169	456	391	451	773	764	633	2707	2667	2794	305	327	358
GREER	PD	1		1	6	8	4	34	29	25	67	43	41	123	127	185	607	522	548	54	68	83
MAULDIN	PD			1	1	6	5	10	6	15	67	113	71	87	75	72	393	346	427	43	70	50
SIMPSONVILLE	PD	2			8	6	9	11	7	17	75	82	152	122	127	94	593	543	674	45	40	49
TRAVELERS REST	PD					1		1	5	8	1	4	10	19	10	23	129	166	187	19	18	9
GREENVILLE TECH	PD											4				15			33			
BOB JONES UNIVERSITY	PD															16			12			
STATE TRANSPORT POLICE	PD																					1
GREENVILLE PATROL	PD											4							1		2	1
GREENWOOD	County	2	5	4	25	37	22	61	76	48	582	653	602	650	787	758	2690	2532	2479	187	171	178
GREENWOOD	SO		3	1	14	21	11	10	10	12	229	320	325	275	363	348	1137	1187	1231	91	106	100
GREENWOOD	PD	2	2	3	11	14	11	51	64	36	334	301	251	336	394	373	1385	1198	1112	84	59	69
WARE SHOALS	PD					1					13	11	11	16	13	23	102	68	80	7	5	7
NINETY SIX	PD					1			1		5	20	13	14	5	4	36	43	22	3		2
LANDER UNIVERSITY	PD								1		1	1	2	9	12	10	30	36	34	1	1	
GREENWOOD PATROL	PD																			1		

Return A Offense	Murder			Rape			Robbery			Aggravated Assault			Burglary			Larceny			Motor Vehicle Theft		
Incident Date	2005	2006	2007	2005	2006	2007	2005	2006	2007	2005	2006	2007	2005	2006	2007	2005	2006	2007	2005	2006	2007
Jurisdiction	2005	2006	2007	2005	2006	2007	2005	2006	2007	2005	2006	2007	2005	2006	2007	2005	2006	2007	2005	2006	2007
HAMPTON County	4		4	3	4	6	14	11	17	83	153	136	235	256	198	354	456	418	43	34	50
HAMPTON SO	2		2		3	3	5	1	8	40	80	86	99	109	102	166	191	208	21	16	33
BRUNSON PD								1		1			2	1		6	5				
ESTILL PD	2			1	1	1		2	4	18	44	29	24	40	50	34	59	73	3	5	14
HAMPTON PD			2	2		2	7	7	4	10	24	18	99	98	42	135	186	126	14	12	2
VARNVILLE PD							1			4			5			2			2		
YEMASSEE PD							1		1	10	5	3	6	8	4	11	15	11	3	1	1
HORRY County	29	24	13	122	171	144	414	449	487	1344	1346	1725	3002	3170	3748	10808	10658	12044	1467	1654	1545
HORRY SO										1		1	1			39	49	39		1	
ATLANTIC BEACH PD					1	2	2	3	8	10	11	13	5	11	14	16	17	20	4	5	6
CONWAY PD	4	3	1	5	7	7	35	42	54	94	154	157	175	210	312	847	841	1019	52	56	90
AYNOR PD				1				2		39	35	31	3	7	3	54	51	35	8	2	4
HORRY COUNTY PD	20	14	10	54	81	80	158	175	173	887	821	1225	1595	1829	1986	4495	4692	5234	840	971	901
LORIS PD							4		4	7	2	9	22	5	34	75	14	102	8	3	6
MYRTLE BEACH PD	3	7	2	55	69	50	193	203	222	253	282	234	853	783	1018	3877	3630	4008	463	532	490
NORTH MYRTLE BEACH PD	2			6	12	3	16	19	17	37	29	37	258	222	292	1136	1049	1261	67	42	21
SURFSIDE BEACH PD					1	2	5	5	8	10	11	17	53	75	76	201	206	257	21	37	24
COASTAL CAROLINA UNIV. PD				1			1		1	5			37	28	13	68	108	67	4		3
S.C. FORESTRY COMM. PD																	1	2			
HORRY PATROL PD										1	1	1									5
JASPER County	2	8	4	20	17	14	46	56	35	162	131	160	328	358	259	847	734	754	86	120	116
JASPER SO	2	7	3	10	12	9	28	26	16	133	109	120	245	248	208	360	391	426	59	88	91
HARDEEVILLE PD		1		7	4	3	4	18	8	20	9	17	54	65	30	387	249	213	14	23	16
RIDGELAND PD			1	3	1	2	14	12	11	9	13	23	29	45	21	99	94	115	13	8	9
S.C. FORESTRY COMM. PD																1					
JASPER PATROL PD																					1
KERSHAW County	3	3	3	28	17	21	49	25	32	278	269	194	386	358	512	1287	1130	1136	162	129	172
KERSHAW SO		3	2	25	15	16	24	10	14	175	150	126	314	273	337	831	708	765	126	102	146
CAMDEN PD	3		1	2	2	4	21	12	18	96	107	65	68	73	167	416	351	321	32	23	24
BETHUNE PD															2			2			1
ELGIN PD				1		1	4	3		7	11	3	4	12	6	37	68	48	2	3	1
S.C. FORESTRY COMM. PD																3	2				
KERSHAW PATROL PD											1						1		2	1	
LANCASTER County	1	3	5	36	37	25	59	61	68	351	300	269	655	586	797	1734	1644	1710	122	110	155
LANCASTER SO	1	2	3	25	28	20	32	40	46	178	160	136	474	434	591	1144	1184	1224	95	86	114
LANCASTER PD		1	2	11	9	5	27	21	22	173	140	133	181	152	206	590	459	484	27	24	41
S.C. FORESTRY COMM. PD																	1	1			
LANCASTER PATROL PD																		1			

Return A Offense	Murder			Rape			Robbery			Aggravated Assault			Burglary			Larceny			Motor Vehicle Theft		
Incident Date	2005	2006	2007	2005	2006	2007	2005	2006	2007	2005	2006	2007	2005	2006	2007	2005	2006	2007	2005	2006	2007
Jurisdiction	2005	2006	2007	2005	2006	2007	2005	2006	2007	2005	2006	2007	2005	2006	2007	2005	2006	2007	2005	2006	2007
LAURENS County	3	8	8	30	37	37	43	61	67	488	423	419	740	793	687	1815	1718	1538	227	227	183
LAURENS SO	2	3	4	24	31	28	18	21	28	267	196	188	518	580	472	875	808	748	182	178	131
LAURENS PD	1	2	2	3	4	3	14	23	18	130	151	126	132	109	119	482	470	409	23	22	25
CLINTON PD		3	2	3	2	6	11	17	21	89	74	100	89	103	96	443	427	366	21	25	27
WHITTEN CENTER PD										2	2	5	1	1		15	8	14			1
PRESBYTERIAN COLLEGE PD																	5				
LAUREN PATROL PD																		1	1	1	
LEE County	2	5	1	9	4	4	14	9	9	119	104	101	225	178	197	456	456	522	51	49	67
LEE SO	1	3	1	9	4	4	9	7	4	85	67	82	158	100	133	264	245	309	41	38	51
BISHOPVILLE PD	1	2					4	2	5	28	35	18	46	57	60	172	196	211	7	10	16
LYNCHBURG PD							1			6	2	1	21	21	4	19	15	2	3	1	
S.C. FORESTRY COMM. PD																1					
LEXINGTON County	9	11	11	82	62	95	213	166	224	843	819	805	1634	1487	1553	5323	5366	5341	654	648	635
LEXINGTON SO	8	9	10	45	39	59	104	97	123	408	425	412	1117	974	1043	2608	2725	2695	463	452	454
BATESBURG-LEESVILLE PD				5	1	3	4	2	3	21	31	63	62	66	55	189	164	240	10	16	29
CAYCE PD				6	7	13	33	14	21	83	97	120	105	131	140	631	661	557	52	55	51
LEXINGTON PD				3	3	3	5	1	4	24	12	48	39	30	48	452	439	517	29	23	14
WEST COLUMBIA PD	1	2		11	5	10	51	38	53	226	181	102	171	166	139	668	692	700	64	68	48
CHAPIN PD						2	1			5	8		7	12	4	62	54	43			1
IRMO PD				5	4	5	12	10	10	37	38	27	67	56	53	301	300	299	6	12	16
PELION PD								1		1	1	3	8	5	9	12	19	37	3		
PINE RIDGE PD				1			1		1	12	4	4	8	9	16	20	31	34	1	3	2
SOUTH CONGAREE PD				5	1				1	11	6	7	31	14	23	111	38	59	10	3	7
SPRINGDALE PD				1			1	1	4	3	8	6	11	8	15	85	84	80	8	9	4
SWANSEA PD			1		2		1	2	2	6	7	12	4	16	6	66	84	35	2	1	4
AIRPORT PD											1					16	15	10	2	3	3
GASTON PD										6			2		2	30	12	3	4	1	
MIDLANDS TECH COLLEGE PD									2				2			71	48	32		2	1
S.C. FORESTRY COMM. PD																1					
LEXINGTON PATROL PD												1									1
MCCORMICK County				4	1	1	4	1	6	52	40	40	43	28	38	92	93	118	41	17	21
MCCORMICK SO				3	1	1	2		1	38	21	22	28	27	30	49	51	61	36	14	14
MCCORMICK PD				1			2	1	5	14	19	18	15	1	8	43	42	57	5	3	7
MARION County	1	1	7	13	11	15	29	55	63	197	292	274	521	409	427	1334	1211	1249	112	95	123
MARION SO		1	3	6	4	11	2	13	15	102	126	136	230	202	206	484	440	498	70	62	69
MARION PD	1		3	4	4	1	8	22	33	55	112	86	129	99	116	392	360	371	23	17	31
MULLINS PD			1	3	3	3	19	20	15	40	54	51	159	108	100	451	410	375	18	16	22
NICHOLS PD												1	3		5	6		5	1		1
S.C. FORESTRY COMM. PD																1	1				

Return A Offense		Murder			Rape			Robbery			Aggravated Assault			Burglary			Larceny			Motor Vehicle Theft		
Incident Date		2005	2006	2007	2005	2006	2007	2005	2006	2007	2005	2006	2007	2005	2006	2007	2005	2006	2007	2005	2006	2007
Jurisdiction		2005	2006	2007	2005	2006	2007	2005	2006	2007	2005	2006	2007	2005	2006	2007	2005	2006	2007	2005	2006	2007
PICKENS	County	3	6	1	37	35	45	27	34	46	327	280	343	1022	797	886	2832	2447	2671	322	314	326
PICKENS	SO	3	4		19	23	27	7	7	12	213	182	207	644	501	553	1257	1058	1131	163	212	216
CENTRAL	PD		1		1	5	2		2	4	11	6	11	19	10	34	53	89	110	13	8	6
CLEMSON	PD				3	3	8	2	8	4	18	14	17	49	60	91	218	190	224	37	27	18
EASLEY	PD		1	1	11	3	6	16	15	20	51	60	76	207	134	130	876	717	750	74	42	64
LIBERTY	PD						1			1	15	4	6	29	25	16	99	78	103	8	6	5
PICKENS	PD				1			2		3	17	8	19	37	34	31	136	102	141	8	5	4
CLEMSON UNIVERSITY	PD				2	1	1		2	2	2	6	7	37	33	31	193	213	211	19	14	13
S.C. FORESTRY COMM.	PD																		1			
RICHLAND	County	35	38	40	170	159	157	695	732	784	2220	2453	2695	3244	3391	3752	12294	11944	11883	1676	1558	1653
RICHLAND	SO	20	31	24	104	96	87	277	316	403	1258	1453	1740	1643	1780	2112	5416	5524	5512	756	848	970
COLUMBIA	PD	15	7	16	53	55	65	381	381	342	870	896	894	1336	1313	1321	5534	5242	5327	840	668	633
EASTOVER	PD					1				3	5	7	3	8	7	5	10	6	3	1		
FOREST ACRES	PD				5	2	2	20	24	23	59	59	47	118	111	105	585	526	546	48	21	36
USC	PD				3	3	3	7	6	4	12	9	8	30	50	86	531	402	304	13	12	7
S.C. MENTAL HEALTH	PD				4	1					8	11		3			29	38	2	3		
STATE MUSEUM	PD																2					
SC EMPLOYMENT COMM.	PD													2			1	1	1			
STATE TRANSPORT POLICE	PD																				1	1
BENEDICT COLLEGE	PD					1		6	1	10	6	16	3	104	125	122	146	145	124	7	4	4
COLUMBIA COLLEGE	PD				1									1			2	19	10	1		
SC BUREAU PROTECTIVE S	PD							4	1	2	2	1		1	3	1	38	39	53	7	4	1
S.C. FORESTRY COMM.	PD																	2	1			
RICHLAND PATROL	PD											1										1
SALUDA	County			1	3	9	9	6	17	9	59	57	99	44	35	74	218	189	195	11	14	41
SALUDA	SO				2	4	8	1	5	4	27	31	38	32	28	69	104	115	130	8	12	27
SALUDA	PD			1	1	5	1	5	12	5	32	26	61	12	7	5	114	74	65	3	2	14
SPARTANBURG	County	21	21	24	79	80	90	291	427	453	1283	1291	1339	2729	3225	3034	8042	8693	7772	928	960	994
SPARTANBURG	SO	11	16	18	47	51	52	126	208	208	701	707	647	1584	2163	1905	4453	5416	4563	563	633	654
SPARTANBURG	PD	10	5	6	26	20	21	147	193	220	502	500	583	933	877	919	2872	2498	2422	295	265	273
WOODRUFF	PD				1	4	6	3	11	3	32	27	33	46	37	46	140	185	168	11	13	6
DUNCAN	PD				2	1	3	6	3	1	6	6	16	19	13	32	81	77	90	7	12	10
CAMPOBELLO	PD							1						2			3			1		
CHESNEE	PD						1	1	2	4	6	11	16	11	9	9	36	45	61	8	3	4
COWPENS	PD				1			1	1	3	7	7	9	36	43	37	133	104	69	1	6	8
INMAN	PD				1	2	1	1	1	3	11	7	9	15	15	19	39	74	76	4	6	10
LANDRUM	PD							1		1	7	4	3	21	11	12	75	65	52	8	2	4
LYMAN	PD				1	1	1	3	1	2	1	5	7	25	19	16	69	77	101	10	2	7
PACOLET	PD						1		1	4	5	9	6	11	24	12	60	63	54	4	5	3
WELLFORD	PD					1	3	1	5	3	3	6	8	26	11	12	40	41	66	9	8	6
SPARTANBURG USC	PD						1				2	1	2		3	6	26	33	32			1
SPARTANBURG METHODIST	PD								1	1						9	7	6	11			1
GREENVLL-SPRTBG AIRPOR	PD																8	7	5	7	5	7
SCSPS DEAF&BLIND	PD											1						1	1			
SPARTANBURG PATROL	PD																	1	1			

Return A Offense	Murder			Rape			Robbery			Aggravated Assault			Burglary			Larceny			Motor Vehicle Theft		
Incident Date	2005	2006	2007	2005	2006	2007	2005	2006	2007	2005	2006	2007	2005	2006	2007	2005	2006	2007	2005	2006	2007
Jurisdiction	2005	2006	2007	2005	2006	2007	2005	2006	2007	2005	2006	2007	2005	2006	2007	2005	2006	2007	2005	2006	2007
SUMTER County	8	10	9	27	40	43	170	141	143	802	1139	1331	1707	1406	1617	2879	2910	3086	312	320	435
SUMTER SO	5	6	5	19	26	33	55	55	45	332	715	918	1094	914	962	1300	1437	1359	201	208	303
SUMTER PD	3	4	4	8	14	10	115	86	98	470	424	413	613	492	655	1578	1473	1724	111	112	132
S.C. FORESTRY COMM. PD																1		2			
SUMTER PATROL PD																		1			
UNION County	1		2	9	13	5	20	20	17	232	243	196	218	240	264	693	658	574	58	55	43
UNION SO	1		1	5	12	2	8	12	5	114	124	108	147	144	165	346	308	272	45	38	31
UNION PD			1	4	1	3	11	8	12	106	117	87	68	93	88	327	341	278	13	17	12
JONESVILLE PD							1			12	2	1	3	3	11	20	9	24			
WILLIAMSBURG County	4	4	4	16	7	8	38	29	22	131	136	124	435	371	288	709	661	616	217	152	137
WILLIAMSBURG SO	4	4	4	13	7	8	24	17	16	113	116	103	368	299	238	499	446	367	142	126	125
HEMINGWAY PD							1	2			1	6	5	11	11	31	15	40	54	8	1
KINGSTREE PD							12	10	6	15	18	15	58	59	34	172	195	202	18	18	8
GREELEYVILLE PD				1						1	1		1	1	5	3	2	6			3
LANE P.D. PD				2			1			2			3	1		4	2		3		
S.C. FORESTRY COMM. PD																	1	1			
YORK County	8	11	8	85	85	62	179	216	199	1423	1461	1478	1410	1385	1477	4945	4746	5161	507	538	582
YORK SO	3	3	2	32	40	36	64	65	57	568	567	511	751	723	825	2074	2011	2204	271	270	312
CLOVER PD	1			5	3	3	3		6	110	145	155	40	35	36	106	137	166	5	15	10
FORT MILL PD		2	2	2	3		8	10	4	47	50	55	38	37	36	178	196	204	13	24	16
ROCK HILL PD	4	6	3	42	32	18	86	114	119	571	599	653	461	507	495	2102	2017	2211	197	217	213
YORK PD			1	4	5	5	18	25	12	122	93	98	109	61	60	348	250	237	17	11	25
TEGA CAY PD										3	4	4	3	7	14	46	63	31	2	1	
WINTHROP UNIVERSITY PD					2			2	1	2	3	2	8	15	11	91	72	107	2		6
YORK PATROL PD																		1			

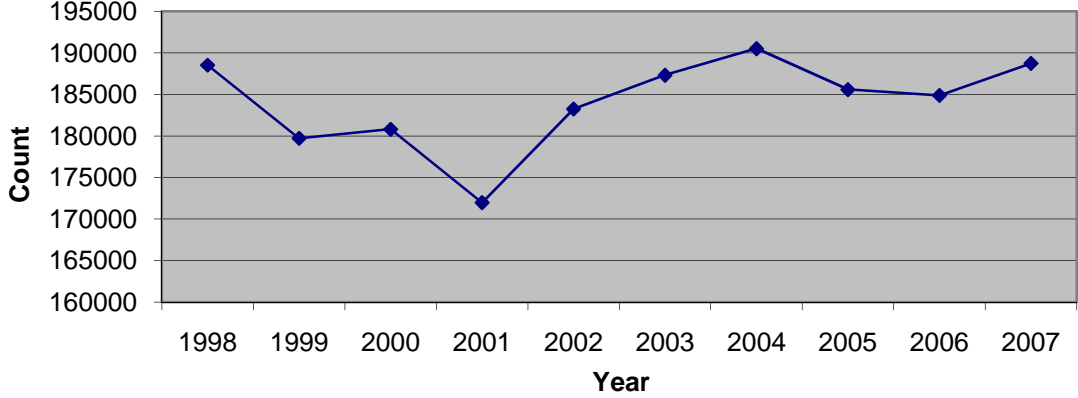
Crime in SC 1998-2007 Index Crime Trends

Incident Date							
Return A Offense	1998	1999	% Change	2000	% Change	2001	% Change
Murder	305	285	-6.6%	298	4.6%	317	6.4%
Forcible Rape Total	1783	1712	-4.0%	1683	-1.7%	1661	-1.3%
Robbery Total	5932	6053	2.0%	6140	1.4%	5536	-9.8%
Aggravated Assault Total	26954	25876	-4.0%	24992	-3.4%	23696	-5.2%
VIOLENT CRIME TOTAL	34974	33926	-3.0%	33113	-2.4%	31210	-5.7%
Burglary Total	44923	41144	-8.4%	40216	-2.3%	39716	-1.2%
Larceny - Theft Total	127491	123880	-2.8%	125013	0.9%	116797	-6.6%
Motor Vehicle Theft Total	16100	14677	-8.8%	15561	6.0%	15442	-0.8%
NON-VIOLENT CRIME TOTAL	188514	179701	-4.7%	180790	0.6%	171955	-4.9%

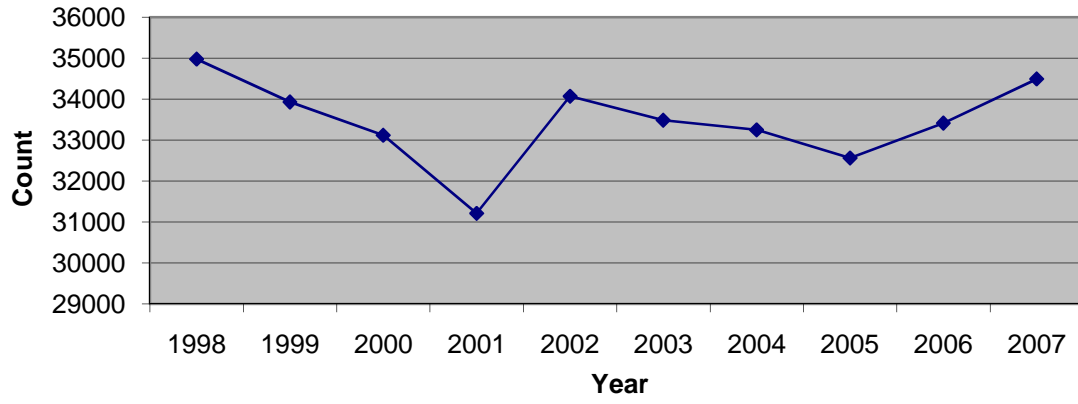
Incident Date						
Return A Offense	2002	% Change	2003	% Change	2004	% Change
Murder	301	-5.0%	303	0.7%	279	-7.9%
Forcible Rape Total	2024	21.9%	1950	-3.7%	1796	-7.9%
Robbery Total	5839	5.5%	5816	-0.4%	5474	-5.9%
Aggravated Assault Total	25904	9.3%	25411	-1.9%	25696	1.1%
VIOLENT CRIME TOTAL	34068	9.2%	33480	-1.7%	33245	-0.7%
Burglary Total	43457	9.4%	43946	1.1%	43688	-0.6%
Larceny - Theft Total	122989	5.3%	127603	3.8%	130934	2.6%
Motor Vehicle Theft Total	16787	8.7%	15761	-6.1%	15883	0.8%
NON-VIOLENT CRIME TOTAL	183233	6.6%	187310	2.2%	190505	1.7%

Incident Date						
Return A Offense	2005	% Change	2006	% Change	2007	% Change
Murder	305	9.3%	360	18.0%	355	-1.4%
Forcible Rape Total	1862	3.7%	1842	-1.1%	1702	-7.6%
Robbery Total	5641	3.1%	5936	5.2%	6306	6.2%
Aggravated Assault Total	24756	-3.7%	25271	2.1%	26127	3.4%
VIOLENT CRIME TOTAL	32564	-2.0%	33409	2.6%	34490	3.2%
Burglary Total	42640	-2.4%	43163	1.2%	45388	5.2%
Larceny - Theft Total	126358	-3.5%	124875	-1.2%	126265	1.1%
Motor Vehicle Theft Total	16567	4.3%	16825	1.6%	17061	1.4%
NON-VIOLENT CRIME TOTAL	185565	-2.6%	184863	-0.4%	188714	2.1%

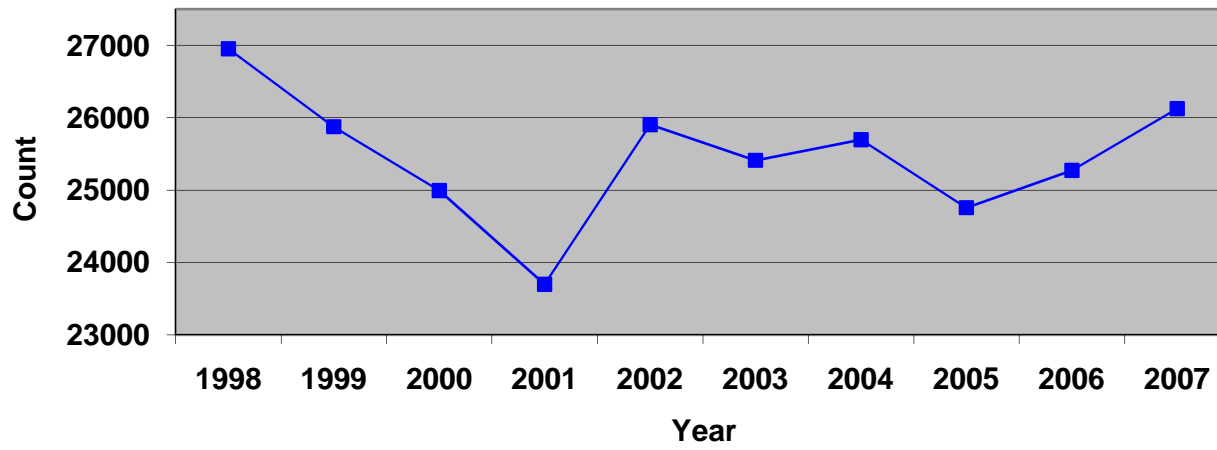
Non-Violent Crime 1998-2007



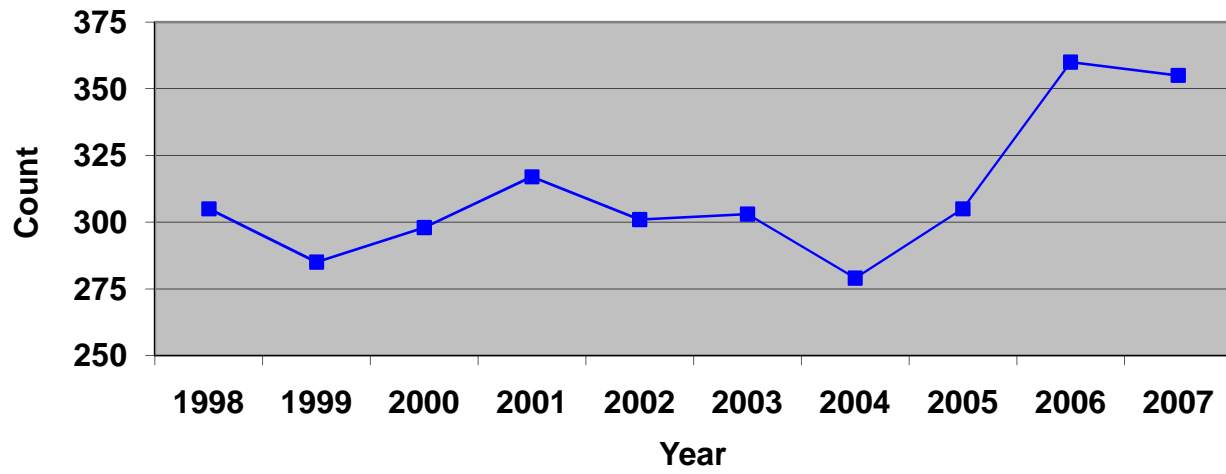
Violent Crime Trends 1998-2007



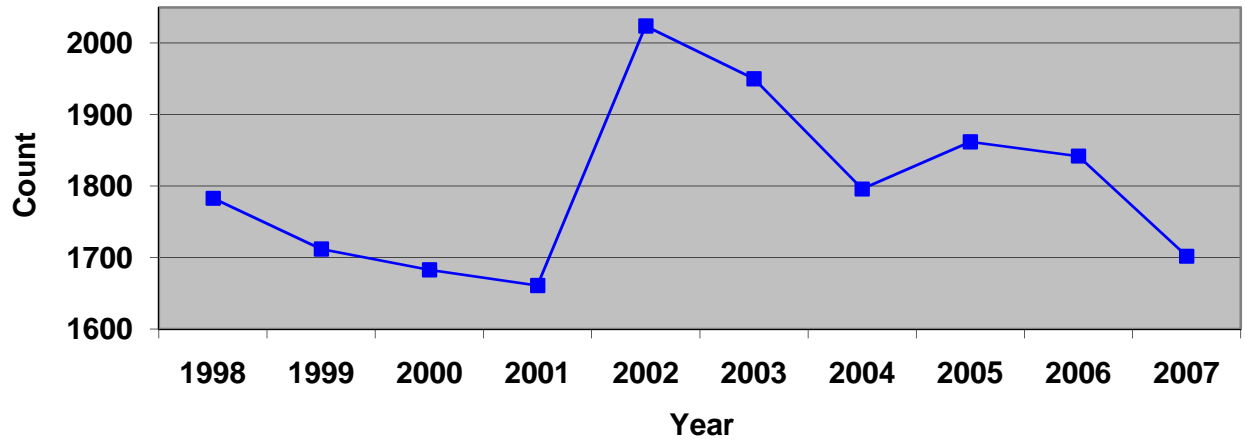
Aggravated Assault Trends 1998-2007



Murder Trends 1998-2007



Rape Trends 1998-2007



Robbery Trends 1998-2007

