

# SCSL Digital Collections

## Allendale, South Carolina

Item Type	Text
Publisher	South Carolina State Library
Rights	Copyright status undetermined. For more information contact, South Carolina State Library, 1500 Senate Street, Columbia, South Carolina 29201.
Download date	2024-09-28 23:26:12
Link to Item	<a href="http://hdl.handle.net/10827/110">http://hdl.handle.net/10827/110</a>

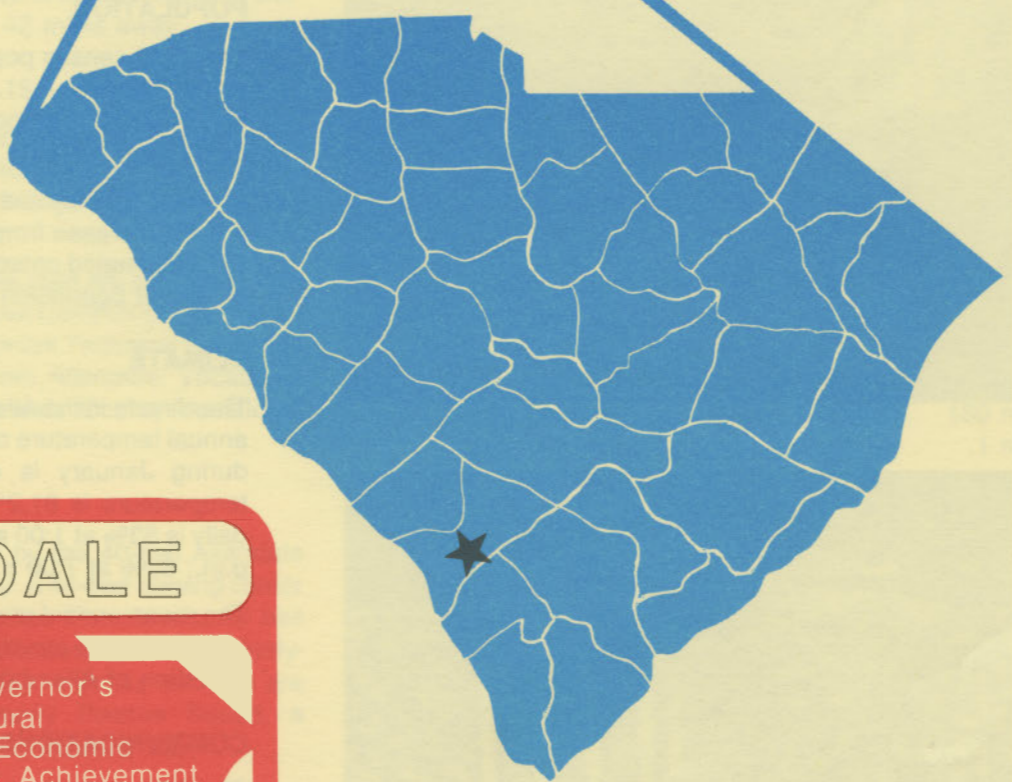
D4925  
2.A55

# ALLENDALE

# south carolina



S. C. STATE LIBRARY  
SEP 14 1983  
STATE DOCUMENTS



ALLENDALE

IS  
A  
GREAT  
TOWN

Governor's  
Rural  
Economic  
Achievement  
Trophy

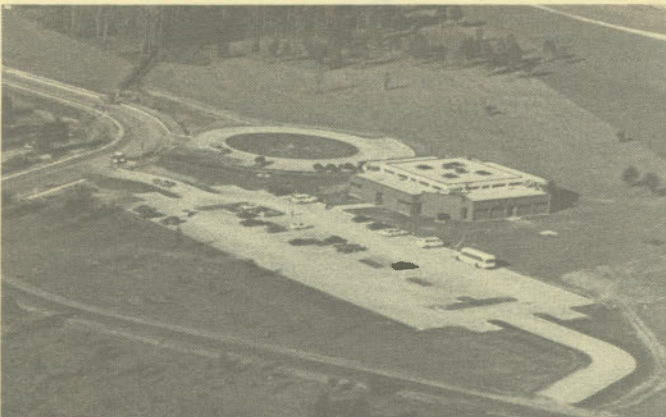




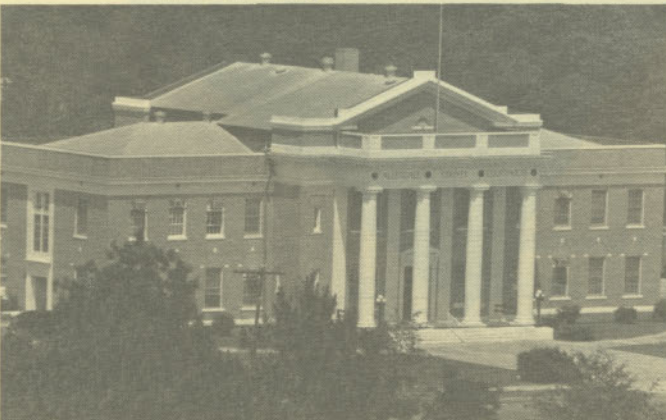
Fairdale Country Club



Allendale County Hospital



Salkehatchie Regional Campus  
of the University of South Carolina



Allendale County Court House

## LOCATION

As depicted on the cover, Allendale, seat of Allendale County, is in the southern section of the state. Charleston, South Carolina's busiest port, is 85 miles east. Columbia is 74 miles north and Greenville is 160 miles northwest. Allendale is 219 miles east of Atlanta; 781 miles south of New York; and 2,742 miles east of San Francisco.



## POPULATION

The 1980 census population of the city of Allendale was 4,400. This was a 21.5% increase from the 1970 population of 3,620. The population within a 15 mile radius is 16,658 and within a 30 mile radius is 85,138.

Allendale County had a 1980 census population of 10,700, a 9.4% increase from the 1970 population of 9,783. The 1981 estimated county population is 10,900 and the 1990 projected population is 11,800.

## CLIMATE

The climate in the Allendale area is temperate with a mean annual temperature of 63.5° F. The average temperature during January is 45.4° F, while the average July temperature is 81.2° F. The average relative humidity daily is 83% at 1:00 a.m.; 87% at 7:00 a.m.; 52% at 1:00 p.m.; 65% at 7:00 p.m.

The mean annual precipitation in the Allendale area is 49 inches and the average growing season is 238 days. The elevation of Allendale is 190 feet above sea level.

## COMMUNICATIONS

*The Citizen Leader* is published weekly in the community, and four large dailies circulate in the area. Local radio coverage is provided by stations WDOG-AM and WZYX-FM, which are ABC affiliates. Television reception is available from eight stations, representing the three major networks and ETV. Cable television is also available.



Telephone service is provided by the Southern Bell Telephone and Telegraph Company.

## GOVERNMENT

The community has a mayor-council form of municipal government. The six city council members and the mayor are elected for four-year terms. Allendale County is governed locally by a five-member county council, whose members are elected for two-year terms.

## POLICE AND FIRE

The Allendale Police Department has six full-time police officers and operates four radio equipped patrol cars. The Allendale Fire Department has two full-time and 23 volunteer firemen who operate three pumper trucks. Allendale's insurance rating is Class 7.

## FINANCIAL INSTITUTIONS

Allendale has two banks to serve the financial needs of the community. The banks have total assets of \$29 million.

## HOTELS AND MOTELS

The community has eight motels with a total of over 200 overnight accommodations. Meeting and banquet facilities are located in the city.

## CHURCHES

Allendale has five Protestant churches and one Catholic church located in the community. A Jewish house of worship is located in Walterboro, 42 miles away.

## EDUCATION

Allendale has two elementary schools, one middle school and one high school. The student/teacher ratio is 21 to 1, with 1,923 students and 90 teachers. In addition, one private school serves the area.

Higher education facilities for the area are provided in the city by the Salkehatchie Regional Campus of the University of South Carolina. The Denmark Technical Education College is located 25 miles from Allendale. Vocational training is available from Allendale County Vocational School.

## MEDICAL SERVICES

Medical services are provided by the 40-bed Allendale County Hospital, five miles away. A 44-bed nursing center is located adjacent to the hospital. The community has two privately-practicing medical doctors and one privately-practicing dentist. Rescue and emergency services are offered by the Allendale County Rescue Squad, a volunteer organization on call 24 hours a day.

## RECREATION AND CIVIC FACILITIES

Recreation facilities consist of one city park, two baseball fields and three school playgrounds. Two golf courses are located in or around Allendale and the Fairdale Country Club has a clubhouse for social events. Civic clubs in

Allendale and nearby Fairfax sponsor organized baseball and football for the youth. Rivers Bridge State Park, 16 miles away, has facilities for fishing, swimming, camping and picnicking. A community concert association sponsors performances by five artists each year.

## POWER

Electric power is supplied by South Carolina Electric & Gas Company. For 1983 SCE&G projects reserve capacity to system coincidental peak of 33%. The company's total generating capacity is 3,359 megawatts. An additional 600 megawatts of nuclear generation will be on line in the fall of 1983 and 550 megawatts of coal fired generation is scheduled for 1989. SCE&G plans to have sufficient reserves to meet immediate and future electrical needs of its service area. In addition SCE&G maintains inter-tie connections with four neighboring utilities.

Electric power is also available from Edisto Electric Cooperative. Power is generated by Central Electric Cooperative and South Carolina Public Service Authority. The generation capacity of plants in operation or under construction totals 3,435 megawatts with 73% produced from coal. Inter-tie connections are maintained with neighboring power supplies.

## FUELS

Natural gas is supplied by South Carolina Electric & Gas Company.

## WATER

The community obtains its municipal water supply from three deep wells. The system is capable of supplying water at a maximum rate of 1.65 million gallons per day, with an average daily demand of 325,000 gallons. Treated water storage consists of 335,000 gallons in elevated storage and 150,000 gallons in ground storage.

Analysis of water supplied in the community:

Total solids	160 mg/L
Alkalinity	131 mg/L
Calcium	50 mg/L
Hardness	160 mg/L
Iron	.1 mg/L
pH	6.8

## SEWER

Allendale has a 15-acre oxidation pond to dispose of the community's sewage. The pond is designed for a daily capacity of 500,000 gallons. The average load is 880,000 gallons per day. Plans for a new wastewater treatment plant are underway with the completion date set for January, 1984.

## LABOR

Because labor information may change in this area, a current labor availability report prepared and kept up to date by the S. C. State Development Board will be furnished to prospective manufacturers at their request. The com-



prehensive report will include sources of recruitable labor, labor force characteristics, work force skill levels, earnings data and other pertinent information. The S. C. State Board for Technical and Comprehensive Education has the resources to recruit and train workers in accordance with a company's entry criteria. This training is at little or no cost to the employer. A lead-time schedule is developed to coordinate recruiting, testing, selecting, and training. This assures that persons will be able to move from training to their respective jobs at the time the plant is ready for initial production.

## TRANSPORTATION

Allendale is served by one interstate highway, I-95 (35 miles away), three United States highways and two South Carolina highways. The community is served by the Seaboard Systems Railroad. Allendale has 25 authorized motor carriers.

### Freight Delivery Times:

To:	By Rail:	By Truck:
Atlanta	3 days	1 day
Boston	6 days	4 days
Chicago	6 days	3 days
Houston	9 days	2 days
New York	4 days	3 days
St. Louis	6 days	2 days
San Francisco	12 days	5 days

The Columbia Metropolitan Airport, 70 miles away, offers regularly scheduled commercial airline service on Delta, Eastern, Bankair and Freedom. This modern facility has an air freight terminal that provides complete service for major airlines. Augusta, 52 miles away, also has commercial airline service. Private aircraft utilize the Allendale County Airport, 2.5 miles away, which has a 3,400-foot, paved and lighted runway. The county airport offers 100LL

## MAJOR EMPLOYERS

Name	Product or Service	Employees
Badische Corporation	Carpet yarn	156
Collum's Lumber Mill, Inc.	Lumber and wood chips	53
Corbett Plywood Corp.	Veneer	54
Kayser-Roth	Ladies' loungewear	270
Sandoz, Inc.	Dyestuffs	194

and Jet A fuels, flight instruction, tiedowns, charter service, major airframe and powerplant repairs, RBn, Unicom, and Vortac.

## FOREIGN TRADE ZONE

There is a Foreign Trade Zone located in Charleston, South Carolina, 85 miles away. The Foreign Trade Zone allows manufacturers to store, manufacture, or process goods without paying U.S. Customs duties or worrying about quota compliance. This Foreign Trade Zone is served by a multi-mode transportation network which provides excellent accessibility to market areas.

## TAXES

The assessment on industrial property in South Carolina is 10.5% of the market value. New industry is granted a five-year moratorium on general county taxes (with the exception of school taxes). The city tax rate is \$12.10 per \$100 of assessed value. The county rate is \$12.10 per \$100 of assessed value. The effective city tax rate (tax liability per \$100 of market value) is \$1.27. The effective county rate is \$1.27. The state has no tax on a manufacturer's inventories, goods-in-process, raw materials or finished goods. Treatment facilities or equipment of manufacturing plants which control water or air pollution are exempt from all property taxation.

## INDUSTRIAL SITES

Industrial sites are available in Allendale with a wide range of geographic and topographic features. In all probability, a site that will meet the needs of most industries' requirements has been identified, catalogued, and entered into the State Development Board's Computerized Site Selection System. Detailed site information will be furnished upon request.

For Additional Information Contact:

SOUTH CAROLINA STATE DEVELOPMENT BOARD  
 P. O. Box 927, Columbia, South Carolina 29202  
 (803) 758-3145

